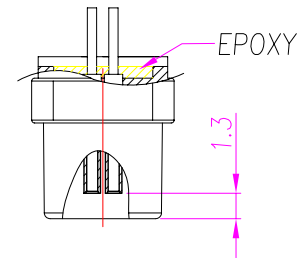
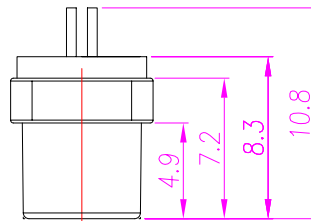
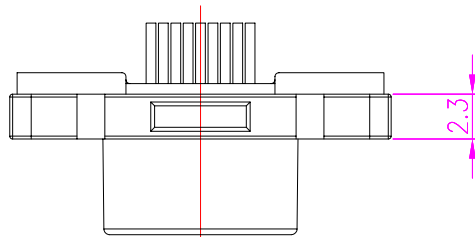
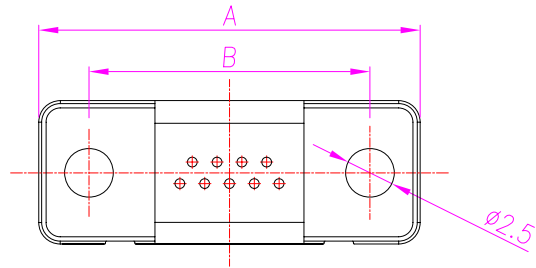


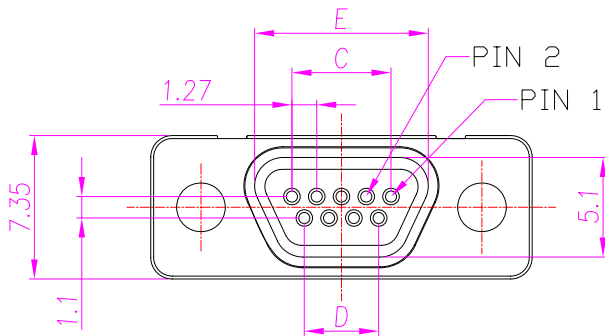
Rev	Revisions	Rev.Drawn	Date
A		Du	25.08.2010
B		Du	07.12.2011

TABLE A

P/N	NUMBER OF PINS	A	B	C	D	E
DB-09M2-04	9	19.55	14.35	5.08	3.81	8.90
DB-15M2-02	15	23.36	18.20	8.89	7.62	12.60
DB-25M2-02	25	29.70	24.55	15.24	13.97	19.20



1. MATERIAL :
 - 1-1. HOUSING : PBT UL94V-0 ; COLOR : BLACK
 - 1-2. CONTACT : BRASS
 - 1-3. SHELL : Zn Alloy
2. FINISH :
 - 2-1. CONTACT : 15u" GOLD OVER 60u" MIN, NICKEL ON MATING & SOLDER AREA
 - 2-2. SHELL : NICKEL PLATED 60u" ~ 100u" ON OVER ALL
3. ELECTRICAL SPECIFICATION :
 - 3-1. RATED CURRENT : 1A at 25°C/77°F, 0.7A at 70°C/158°F
 - 3-2. VOLTAGE : 350Vac
 - 3-3. WITHSTANDING VOLTAGE: 630V AC
 - 3-4. CONTACT RESISTANCE: 15 mΩ (MAX) INITIAL
CONTACT RESISTANCE: 30 mΩ (MAX) FINAL
 - 3-5. INSULATION RESISTANCE: 1000 M ohms (MIN)
4. Environmental :
 - 4-1. Operation Temperature : -40°C~+125°C



SST SOUTH SEA TERMINAL CO.,LTD

SGS Report No.:	Customer:	Part No.: DB-XXM2-0X
Title: MICRO D-SUB MALE 9P-25P		
Drawn By: Storm.Li	SCALE /	SHEET 1/1
Checked By: du	REV. B	DWG NO. /
Approved By: Tony	Thire angle Projection General Dimesion Tolerance	
Units mm		TOLERANCE: .x ±0.20 .xx ±0.15 .xxx ±0.10 .xxxx ±0.05 ANGULAR ±1°