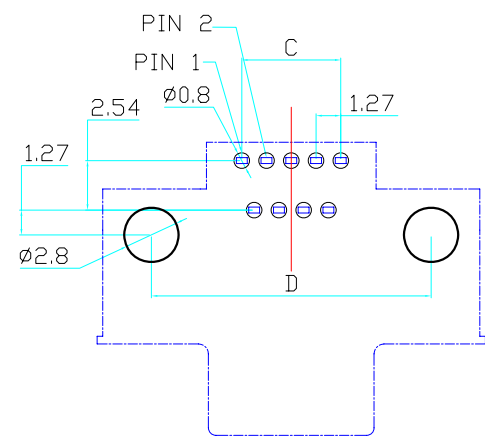
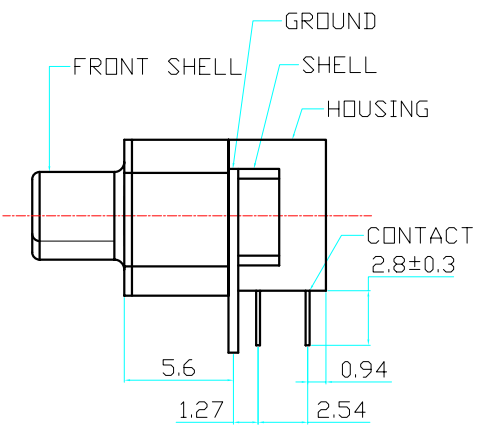
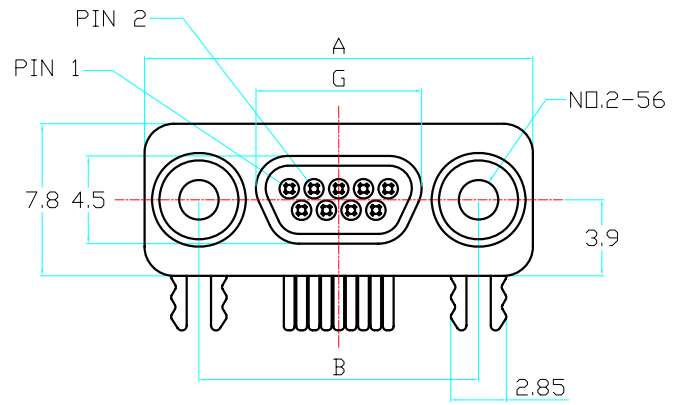
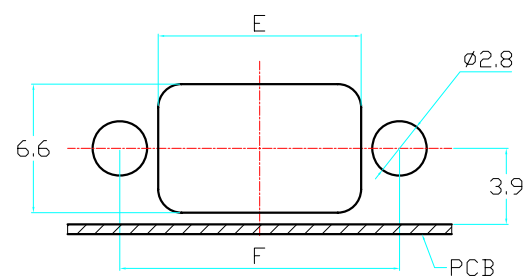
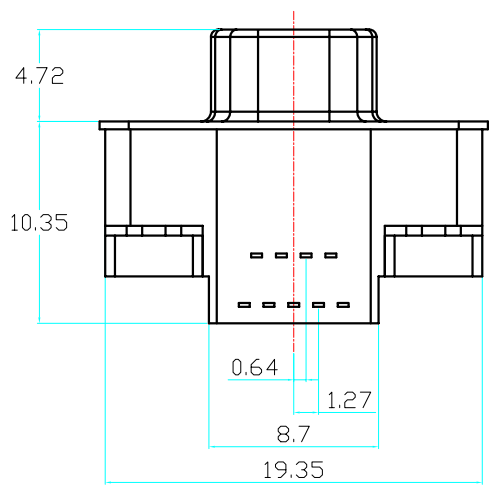


Rev	Revisions	Rev.Drawn	Date
A		Du	12,03,2010
B		Du	07,12,2011

P/N	NUMBER OF PINS	A	B	C	D	E	F	G
DB-09F3-01	9	19.93	14.35	5.08	14.35	10.41	14.35	8.30
DB-15F3-01	15	23.75	18.16	8.89	18.16	14.22	18.16	12.20
DB-25F3-01	25	30.10	24.51	15.23	24.51	20.57	24.51	18.55



P.C.B. LAYOUT



PANEL CUT-OUT

- MATERIAL :**
 - 1-1. HOUSING : LCP UL94V-0 ; COLOR : BLACK
 - 1-2. CONTACT : PHOSPHOR BRONZE
 - 1-3. FRONT SHELL : SPCC
 - 1-4. SHELL : BRASS
 - 1-5. GROUND : BRASS
- FINISH :**
 - 2-1. CONTACT : GOLD 15u" ON CONTACT AERA
MATTE TIN 60u" ON SOLDER AERA
 - 2-2. FRONT SHELL : NICKEL PLATED 60u" ~ 100u" OVER ALL
 - 2-3. SHELL : NICKEL PLATED 60u" ~ 100u" OVER ALL
 - 2-4. GROUND : NICKEL PLATED 60u" ~ 100u" OVER ALL
- ELECTRICAL SPECIFICATION :**
 - 3-1. Rated current : 1A at 25°C/77°F, 0.7A at 70°C/158°F
 - 3-2. Voltage : 350Vac
- Environmental :**
 - 4-1. Operation Temperature : -55°C~+125°C

SST SOUTH SEA TERMINAL CO.,LTD

SGS Report No.:	Customer:	Part No.: DB-XXF3-01
Title: MICRO D-SUB 9-25P(F) 转90°		
Drawn By: Storm.Li	SCALE /	SHEET 1/1
Checked By: du	REV. B	DWG NO.:
Approved By: Tony	Thire angle Projection General Dimesion Tolerance	Units mm
TOLERANCE:		ANGULAR ±1°
.x ±0.20		.xxx ±0.15
.xxx ±0.10		.xxxx ±0.05