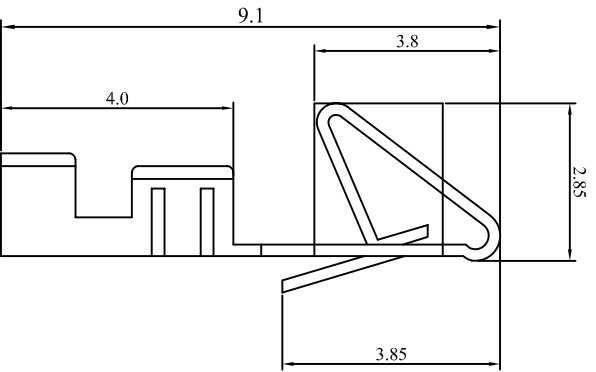
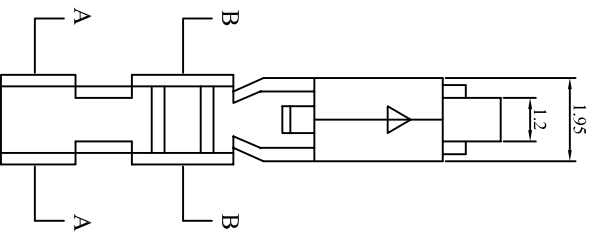
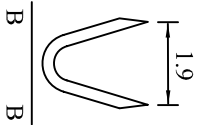
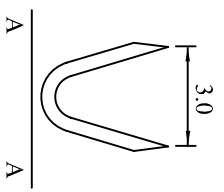


For WW250-MXX Series housing

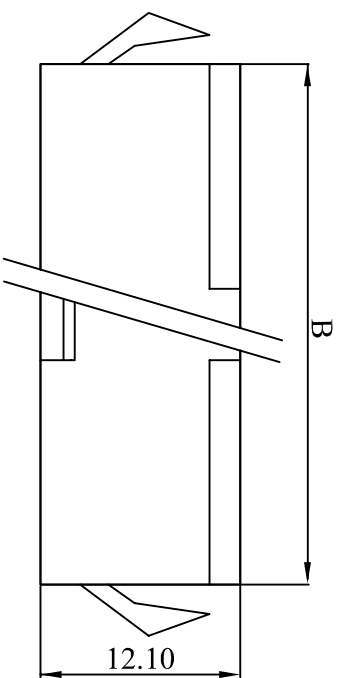
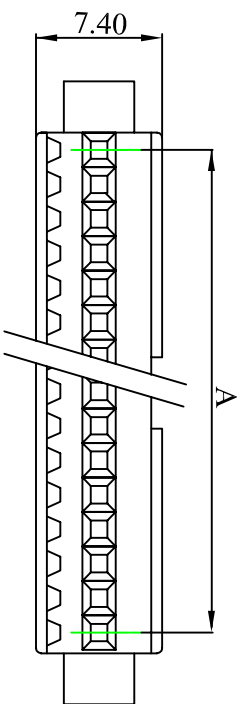


Terminal
 Part No: WW250-FT
 Applicable Wire: AWG 22-28
 Material: Brass/Tin
 Finish: Tin-Plated/gold flash
 Thickness: 0.2mm
 Q'ty: 7,000 pcs/roll



Rev	Description/Date	Drawn By: Storm.li	Customer:	Third angle projection	Units: mm						
△		Checked By: Simmon	Part No.: WW250-FT		<table border="1"> <tr> <td>X.X</td> <td>X.XX</td> <td>X.XXX</td> </tr> <tr> <td>±0.25</td> <td>±0.1</td> <td>±0.08</td> </tr> </table>	X.X	X.XX	X.XXX	±0.25	±0.1	±0.08
X.X	X.XX	X.XXX									
±0.25	±0.1	±0.08									
△		Approved By: Tony	Title: 2.5mm Pitch W-W Male Terminal								
SGS Report No.: KA/2005/40815/A-2											

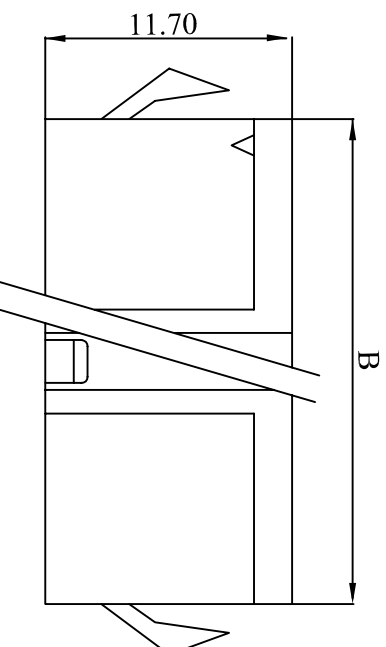
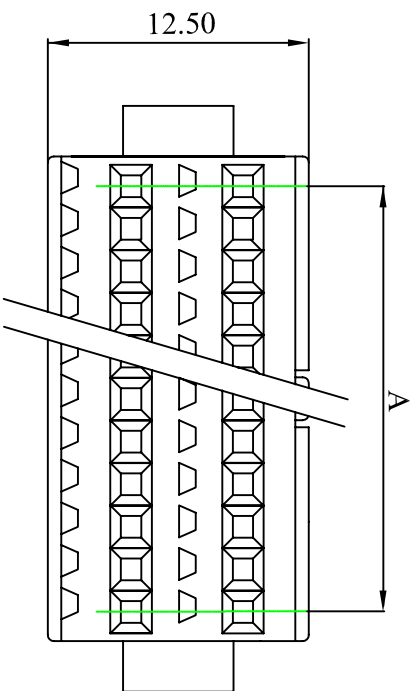
SOUTH SEA TERMINAL CO., LTD



(2-12P)

WW250-M Series housing

Material :Nylon 66 UL 94V-0
 Accept WW250-FT Terminal
 Mate eith WW250-F Series housing
 Current rating: 3A AC,DC
 Voltage rating :250V AC,DC
 Contact resistance :20mΩ Max
 Insulation resistance :500MΩ Min
 Withstanding voltage :1000V AC/MINUTE
 Temperature range:-25°C TO +85°C



(16-18P)

POLES	PART NO	DIMENSIONS(mm)	
		A	B
2	WW250-M02	2.50	5.60
3	WW250-M03	5.00	8.10
4	WW250-M04	7.50	10.60
5	WW250-M05	10.00	13.10
6	WW250-M06	12.50	15.70
7	WW250-M07	15.00	18.30
8	WW250-M08	17.50	20.80
9	WW250-M09	20.00	23.20
10	WW250-M10	22.50	25.80
11	WW250-M11	25.00	28.30
12	WW250-M12	27.50	30.80
16	WW250-M16	17.50	20.80
18	WW250-M18	20.00	23.30

Rev	Description/Date	Drawn By: Storm.li
△		Checked By:Simmon
△		Approved By: Tony

Customer:	
Part No.:	WW250-M Series
Title:	Housing

Third angle projection	Units: mm
General Dimension Tolerance	X.X ±0.25 X.XX ±0.1 X.XXX ±0.08

SGS Report No.: KA/2004/80788/A-2

SOUTH SEA TERMINAL CO.,LTD