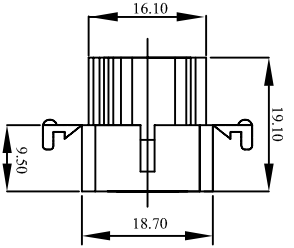
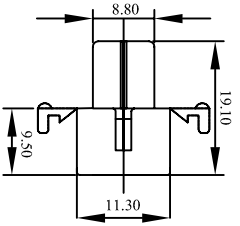
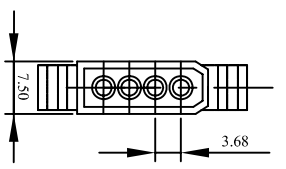


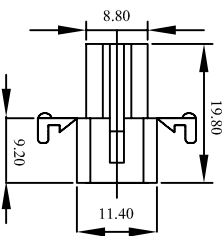
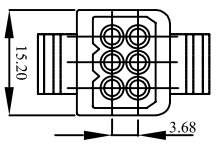
WW158B-F01(5A/250V)



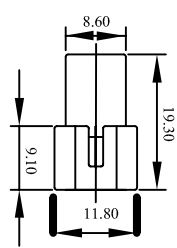
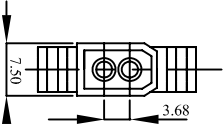
WW158B-F04E(5A/250V)



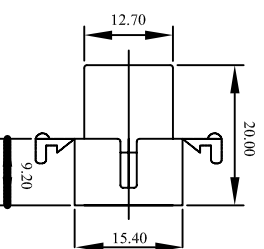
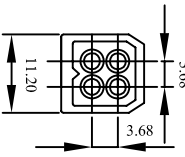
WW158B-F06E(5A/250V)



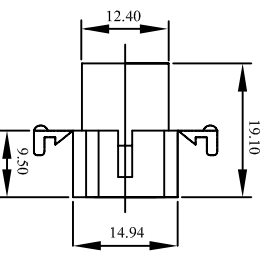
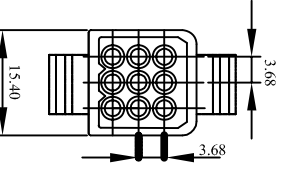
WW158B-F02E(5A/250V)



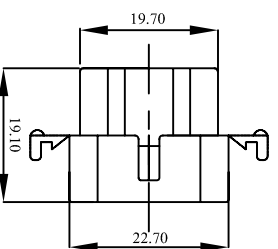
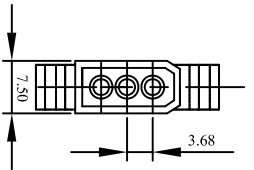
WW158B-F04-1E(10A/250V)



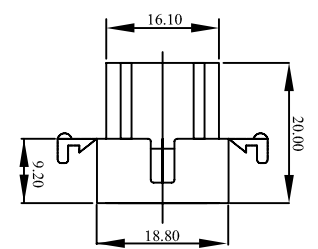
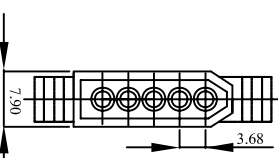
WW158B-F09E(5A/250V)



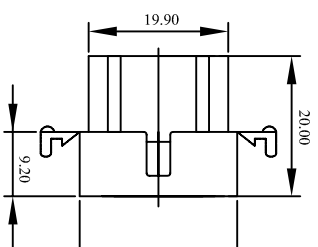
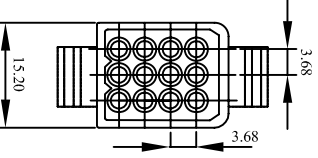
WW158B-F03E(5A/250V)



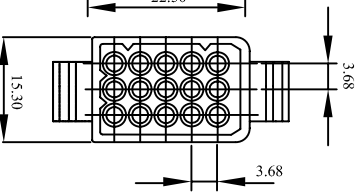
WW158B-F05E(5A/250V)



WW158B-F12-1E(5A/250V)

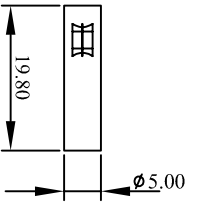


WW158B-F15E(5A/250V)

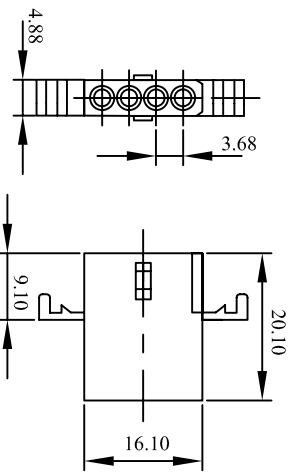


Material: Nylon 66 UL94V-2
 Current rating: 5A AC, DC Max
 Voltage Rating: 300V AC, DC Max
 Contact resistance: 15mΩ Max
 Insulation resistance: 1000MΩ Min
 Withstanding voltage: 1500V AC/Minute
 Temperature range: -25°C to +85°C
 Applicable panel thickness: 2 mm max

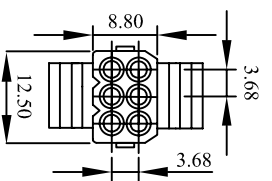
Rev	Description/Date	Drawn By: Storm.li	Customer:	Third angle projection	Units: mm
△		Checked By: Simmon	Part No.: WW158B-F(E) Series	General Dimension Tolerance	X.X ±0.25 X.XX ±0.1 X.XXX ±0.08
△		Approved By: Tony	Title: Housing	SOUTH SEA TERMINAL CO., LTD	
SGS Report No.: KA/2004/80788/A-2					



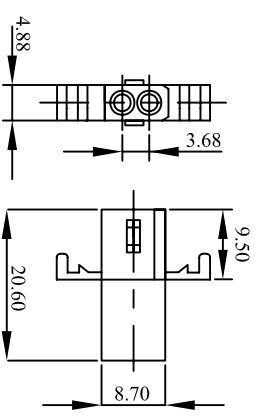
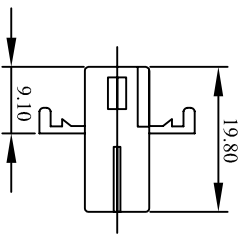
WW158B-M01E (5A/250V)



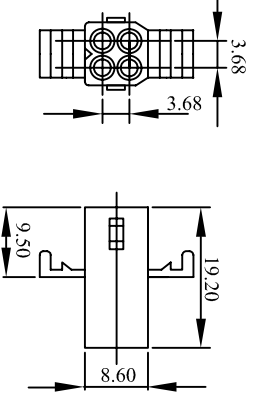
WW158B-M04E (5A/250V)



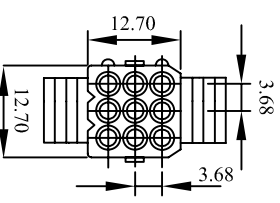
WW158B-M06E (5A/250V)



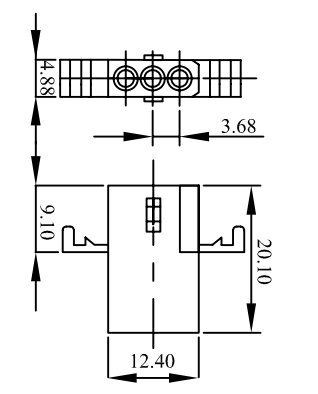
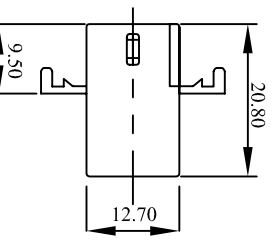
WW158B-M02E (5A/250V)



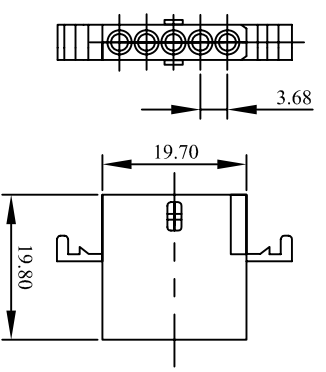
WW158B-M04-1E (5A/250V)



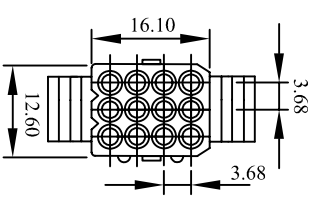
WW158B-M09E (5A/250V)



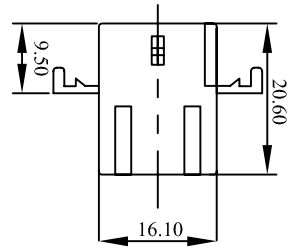
WW158B-M03E (5A/250V)



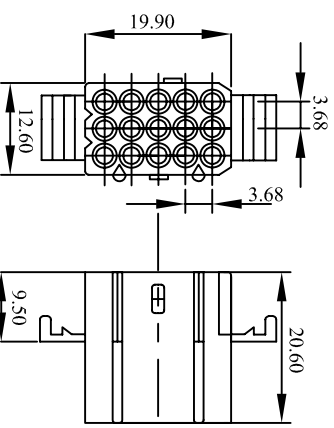
WW158B-M05E (5A/250V)



WW158B-M12E (5A/250V)



WW158B-M15E (5A/250V)



Specification:
 Material: Nylon 66 UL94V-2
 Current rating: 5A AC, DC Max
 Voltage Rating: 300V AC, DC Max
 Contact resistance: 15mΩ Max
 Insulation resistance: 1000MΩ Min
 Withstanding voltage : 1500V AC/Minute
 Temperature range: -25°C to +85°C
 Applicable panel thickness: 2 mm max

REV	DESCRIPTION/DATE	DRAWN BY: STORMLI	CUSTOMER:	THIRD ANGLE PROJECTION	UNITS: MM
△		CHECKED BY: SIMMON			
△		APPROVED BY: TONY			

PART NO.:	WW158B-M(E) Series	GENERAL DIMENSION TOLERANCE	X.X ±0.25 X.XX ±0.1 X.XXX ±0.08
-----------	--------------------	-----------------------------	---------------------------------------

SGS REPORT NO.: KA/2004-80788-A-2	TITLE: Housing	SOUTH SEA TERMINAL CO., LTD
-----------------------------------	----------------	------------------------------------