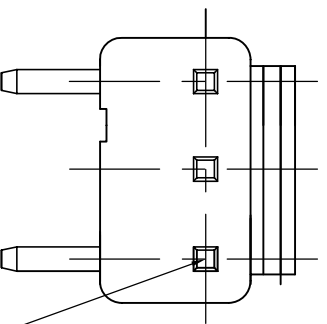
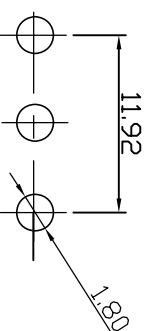


Material: Brass
 Thickness: 0.25mm
 Plating: Tin plated 4u"
 Wire Range: Suitable for AWG#18~22
 Insulation O.D: 3mm (max)
 QTY: 4000 pcs/roll
 Accepts housing: 396G1-HXX

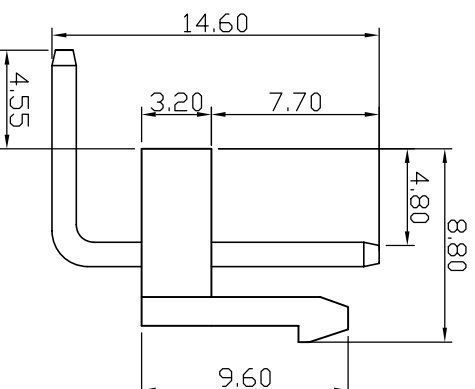
Rev	Description/Date	Drawn By: Storm.li	Customer:	Third angle projection	Units: mm
△		Checked By: Simmon	Part No.: 396G1-T	General Dimension Tolerance	X.X ±0.25 X.XX ±0.1 XXXX ±0.08
△		Approved By: Tony	Title: Terminal	SOUTH SEA TERMINAL CO., LTD	
SGS Report No.:					



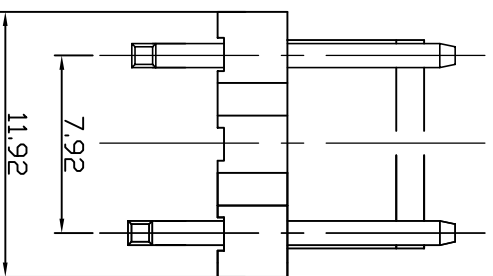
1.14mm Square Pin



P.C. Board layout component side

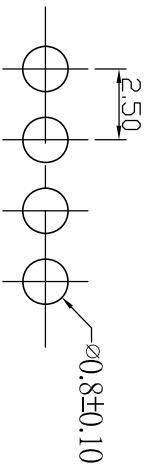
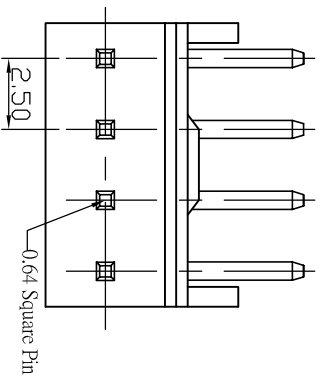


SPECIFICATION :
 Current Rating: 5A AC, DC
 Voltage Rating: 250V AC Maximum
 Operating Temp: -25°C ~ +85°C
 Contact Resistance: 20MΩ Max
 Insulation Resistance: 1000MΩ Min
 Dielectric Withstanding Voltage:
 1500V AC, DC Min
 Terminal Material: Brass/Tin-plated
 Material: Nylon 66, UL94V-0



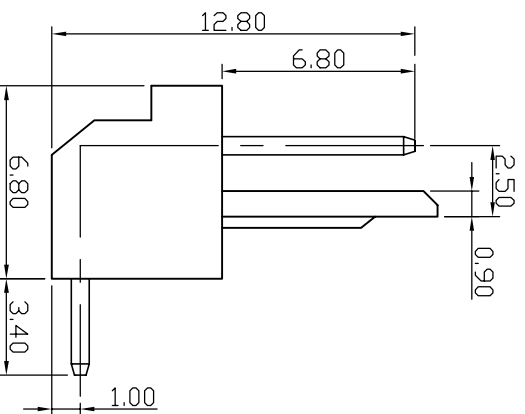
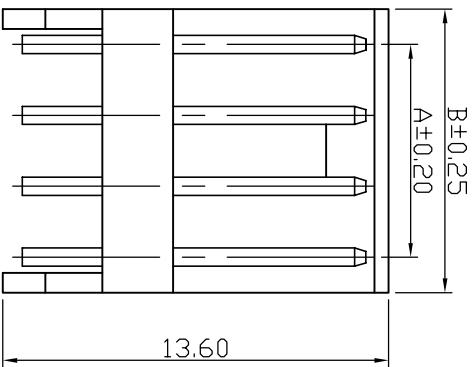
1	2	3	4	5	6	7	8	9	10	11	12	13	14							
Rev			Description/Date			Drawn By: Storm.li			Customer:			Units: mm								
△						Checked By: Simmon			Part No.: 396G1-R03			Third angle projection								
△			Approved By: Tony			Title: 396 mm Wire to Board Herder DIP 90° Type			General Dimension Tolerance			<table border="0"> <tr> <td>X.X</td><td>X.XX</td><td>X.XXX</td></tr> <tr> <td>±0.25</td><td>±0.1</td><td>±0.08</td></tr> </table>			X.X	X.XX	X.XXX	±0.25	±0.1	±0.08
X.X	X.XX	X.XXX																		
±0.25	±0.1	±0.08																		
SGS Report No.: CE/2005/63004E																				
1	2	3	4	5	6	7	8	9	10	11	12	13	14							

SOUTH SEA TERMINAL CO., LTD



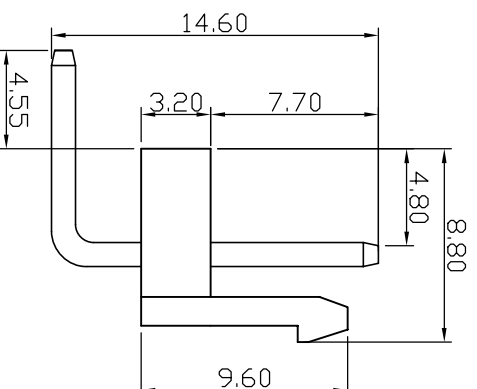
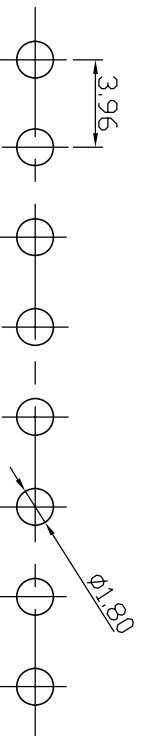
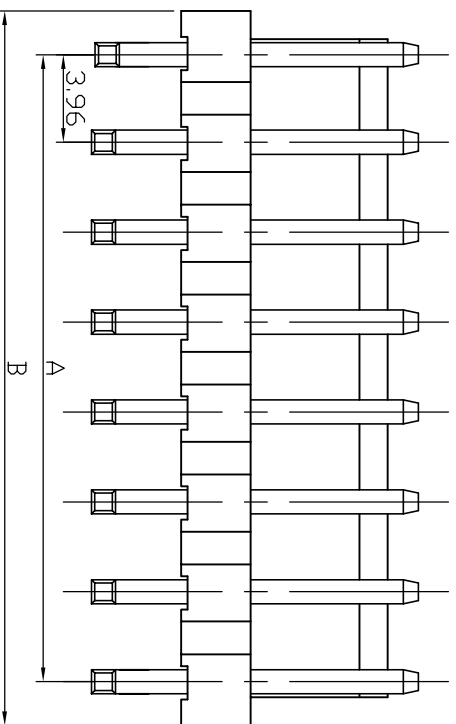
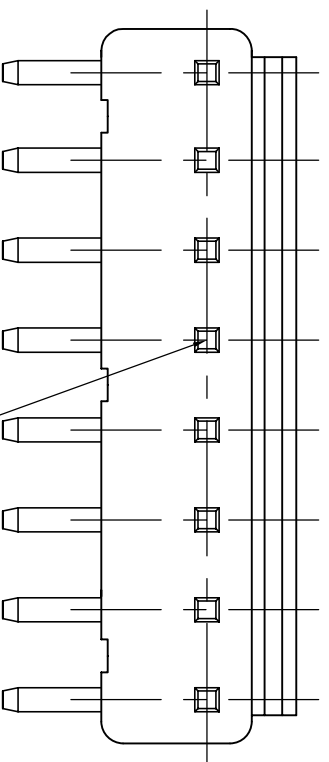
RECOMMENDED P.C. BOARD HOLE DIMM.

SPECIFICATIONS
Electrical
 Current Rating: 3A AC, DC
 Voltage Rating: 250V AC/ max.
 Operating Temp.: -25°C ~ +85°C
 Insulation Resistance: 1000M Ω / min.
 Withstand Voltage: 800V AC/ min.
 Contact Resistance: 20M Ω / max.
Material
 Terminal Material: Brass/ Tin-Plated
 Material: Nylon 66, UL94V-0



Poles	Dimension mm (in.)		Part No.	Note.
	A	B		
2	2.50 (0.098)	5.00 (0.197)		
3	5.00 (0.197)	7.50 (0.295)		
4	7.50 (0.295)	10.00 (0.394)		
5	10.00 (0.394)	12.50 (0.492)		
6	12.50 (0.492)	15.00 (0.591)		
7	15.00 (0.591)	17.50 (0.689)		
8	17.50 (0.689)	20.00 (0.787)		

Rev	Description/Date	Drawn By: Storm.li	Customer:	Third angle projection	Units: mm
△		Checked By: Simmon	Part No.: 396G1-R04K	General Dimension Tolerance	X.X ±0.25 X.XX ±0.1 XXXX ±0.08
△		Approved By: Tony	Title: 2.54 mm Wire to Board Header 90° Type	SOUTH SEA TERMINAL CO., LTD	
SGS Report No.: CE/2005/63004E					

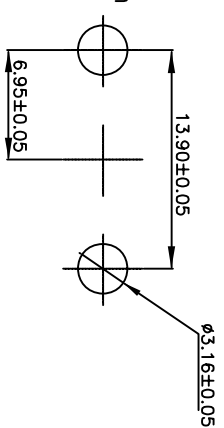
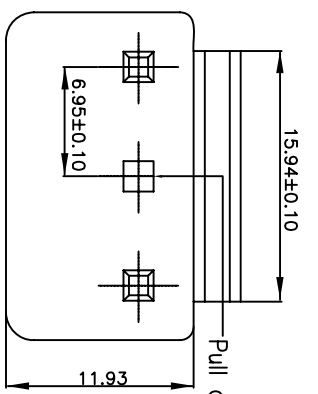


Current Rating: 5A AC, DC
 Voltage Rating: 250V AC Maximum
 Operating Temp: -25°C ~ +85°C
 Contact Resistance: 20MΩ Max
 Insulation Resistance: 1000MΩ Min
 Dielectric Withstanding Voltage:
 1500V AC, DC Min
 Terminal Material: Brass/Tin-plated
 Material: Nylon 66, UL94V-0

Poles	Part No.	Dimension mm	
		A	B
2	396G1-R02	3.96	7.92
3	396G1-R03	7.92	11.92
4	396G1-R04	11.88	15.84
5	396G1-R05	15.84	19.84
6	396G1-R06	19.80	23.80
7	396G1-R07	23.76	27.88
8	396G1-R08	27.72	31.74
9	396G1-R09	31.68	35.86
10	396G1-R10	35.64	39.90
11	396G1-R11	39.60	43.84
12	396G1-R12	43.56	47.92
13	396G1-R13	47.52	51.72
14	396G1-R14	51.48	55.92

P.C.Board layout component side.

Rev	Description/Date	Drawn By: Storm.li	Customer:	Third angle projection	Units: mm
△		Checked By: Simmon	Part No.: 396G1-RXX	General Dimension Tolerance	X.X ±0.25 X.XX ±0.1 XXXX ±0.08
△		Approved By: Tony	Title: Wafer	SOUTH SEA TERMINAL CO., LTD	
SGS Report No.: CE/2005/63004E					



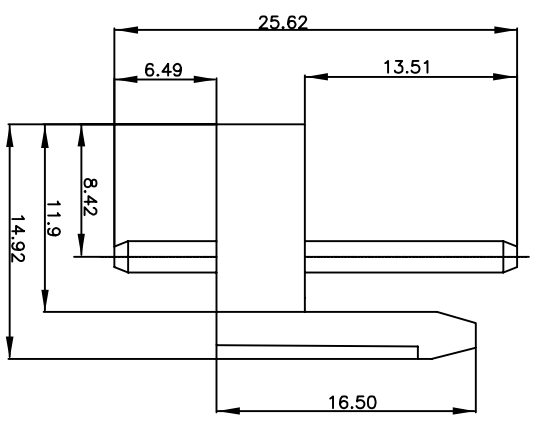
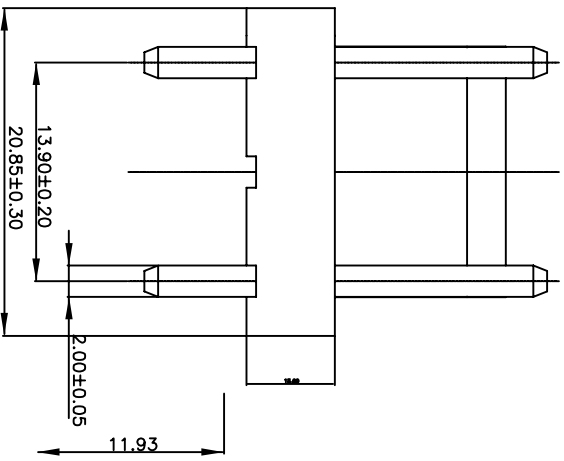
Recommend P.C.Board layout

SPECIFICATIONS

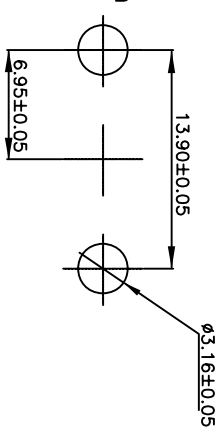
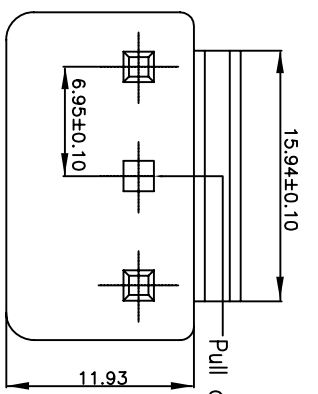
- Voltage Rating: 250V AC/DC
- Current Rating: 7A AC/DC
- Withstand Voltage 1500V AC/minute
- Insulation Resistance 1000MΩ min
- Temperature Range -25°~+120°
- Contact Resistance: 10mΩ max

WAFER

- Part No.: 396G1-V03
- Poles: 2~15
- Material: Contact: Brass, Tin Plated (matte sn)
- Base: Nylon 66 UL94V-0
- Q'ty: 1000 pcs/Bag



1	2	3	4	5	6	7	8	9	10	11	12	13	14
Rev	Description/Date	Drawn By: Storm.li	Checked By: Simmon	Approved By: Tony	Customer:	Part No.:	396G1-V03(2XN)	Wafer	Third angle projection	Units: mm			
△									⊕	X.X ±0.25			
△									⊕	X.XX ±0.1			
△									⊕	X.XXX ±0.08			
SGS Report No.: CE/2005/63004E					SOUTH SEA TERMINAL CO., LTD								



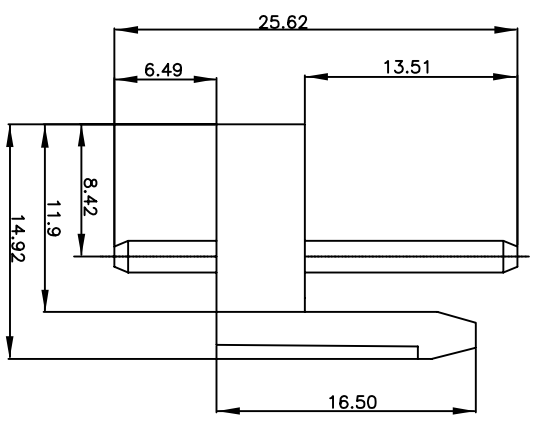
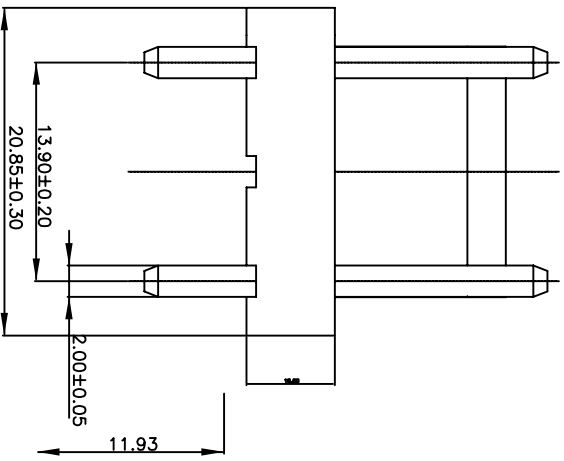
Recommend P.C.Board layout

SPECIFICATIONS

- Voltage Rating: 250V AC/DC
- Current Rating: 7A AC/DC
- Withstand Voltage 1500V AC/minute
- Insulation Resistance 1000MΩ min
- Temperature Range -25°~+120°
- Contact Resistance: 10mΩ max

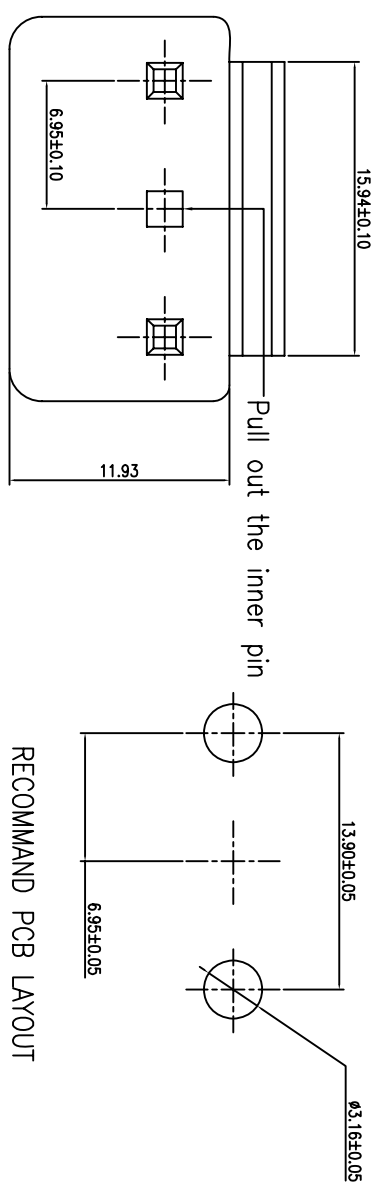
WAFER

- Part No.: 396G1-V03
- Poles: 2~15
- Material: Contact: Brass, Tin Plated (matte sn)
- Base: Nylon 66 UL94V-0
- Q'ty: 1000 pcs/Bag



Rev	Description/Date	Drawn By: Storm.li	Customer:	Part No.:	396G1-V03(2XN)	Third angle projection	Units: mm
△		Checked By: Simmon		Title:	Wafer	General Dimension Tolerance	X.X ±0.25 X.XX ±0.1 XXXX ±0.08
△		Approved By: Tony					
SGS Report No.: CE/2005/63004E							

REVISION		DATE
REV.	DESCRIPTION	



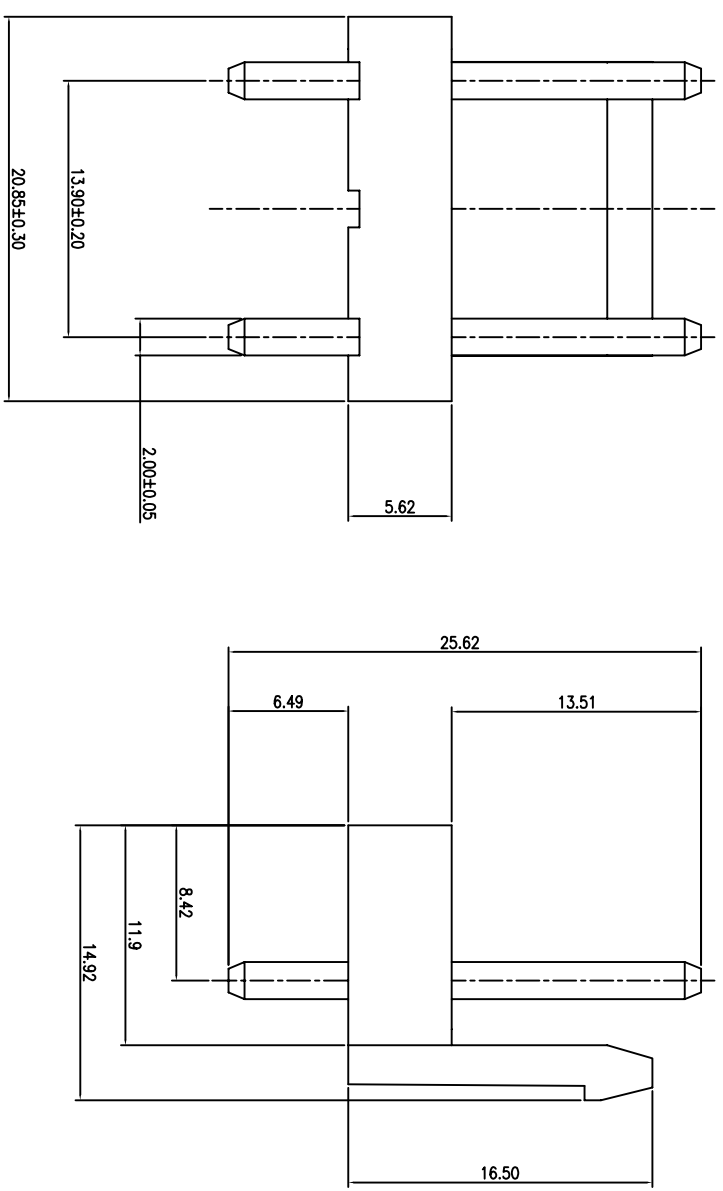
RECOMMAND PCB LAYOUT

SPECIFICATIONS

Voltage Rating:250V AC/DC
 Current Rating:7A AC/DC
 Withstand Voltage 1500V AC/minute
 Insulation Resistance 1000MΩ min
 Temperature Range -25~+120°
 Contact Resistance:10mΩ max

WAFER

Part No.:396G1-V03
 Poles:2~15
 Material:Contact:Brass,Tin Plated(matte sn)
 Base:Nylon 66 UL94V-0
 Q'ty:1000pcs/Bag

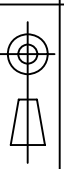


DRAWN BY:	StormLi	Customer:	
-----------	---------	-----------	--

CHECKED BY:	Simmon Zhang	Title:	WAFER
-------------	--------------	--------	-------

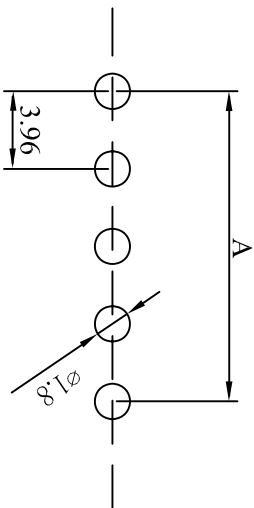
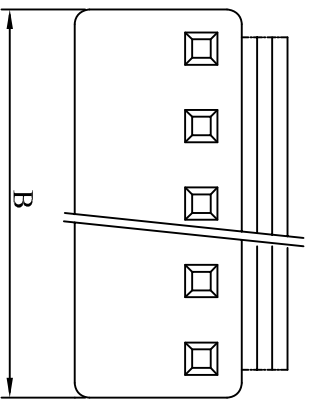
APPROVED BY:	Tony Chou	P/NO:	396G1-V03
--------------	-----------	-------	-----------

GENERAL DIMENSION	TOLERANCE	UNITS:	mm
X.X	±0.30	X.XX	±0.2
X.XXX	±0.1	X.XXX	±0.1



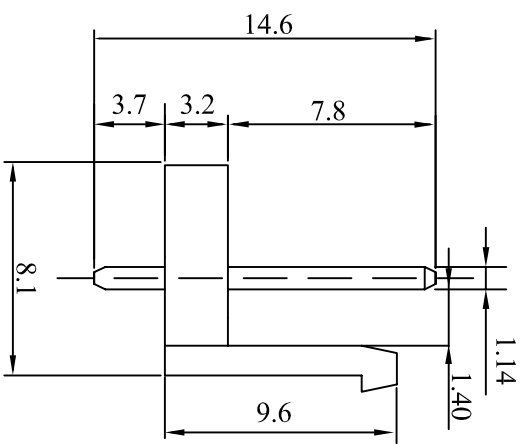
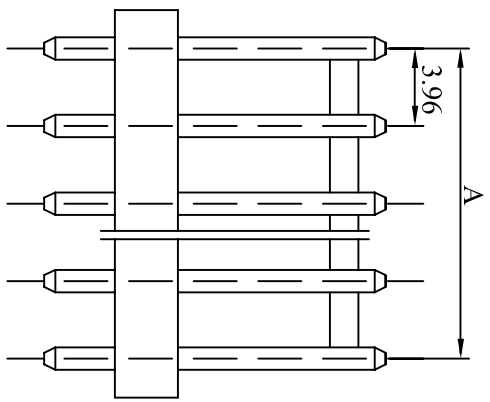
THIRD ANGLE PROJECTION

SOUTH SEA TERMINAL CO.,LTD



Recommend PCB Layout

Material: Nylon 66 UL 94V-0
 Pin brass Tin-Plated
 Mate with 396GI-H Housing
 Current rating: 7A AC, DC
 Voltage rating: 250V AC, DC
 Contact resistance: 20mΩMax
 Insulation resistance: 1000MΩMin
 Withstanding voltage: 1500V AC/Minute
 Temperature range: -25°C TO +85°C
 SQ Pin size: 1.14mm
 PC Board hole: 1.65mm Dia
 PC Board thickness: 1.6mm



POLES	PART NO.	DIMENSIONS (mm)	
		A	B
2	396GI-V02	3.96	7.86
3	396GI-V03	7.92	11.82
4	396GI-V04	11.88	15.78
5	396GI-V05	15.84	19.74
6	396GI-V06	19.80	23.70
7	396GI-V07	23.76	27.66
8	396GI-V08	27.72	31.62
9	396GI-V09	31.68	35.58
10	396GI-V10	35.64	39.54
11	396GI-V11	39.60	43.50
12	396GI-V12	43.56	47.46
13	396GI-V13	47.52	51.42
14	396GI-V14	51.48	55.38
15	396GI-V15	55.44	59.34

Rev Description/Date Drawn By: Storm.li
 Checked By: Simmon
 Approved By: Tony

Customer:
 Part No.:

Title:

396GI-VXX

Third angle projection
 General Dimension Tolerance

Units: mm
 XX ±0.25
 XXX ±0.1
 XXXX ±0.08

SGS Report No.: CE/2005/63004E

Wafer

SOUTH SEA TERMINAL CO., LTD