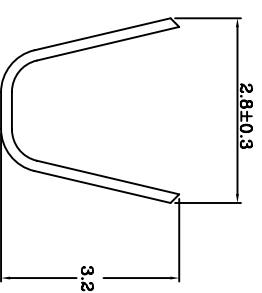
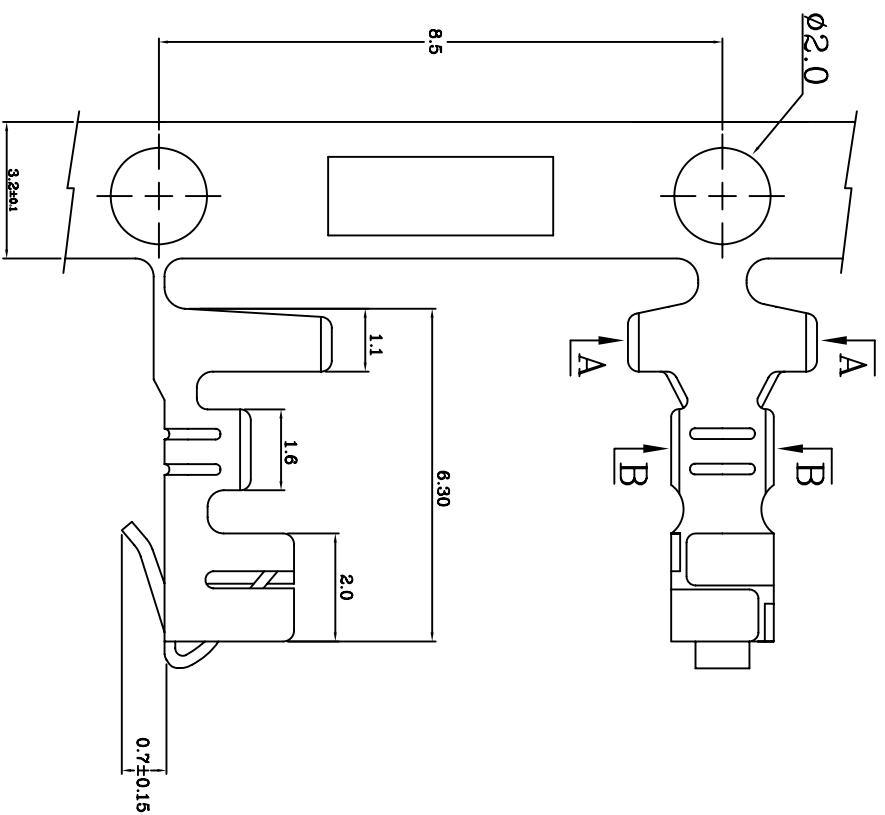


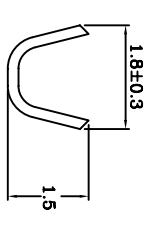
Poles	Dimension mm (in.)		Part No.
	A	B	
2	2.50 (0.098)	5.70(0.224)	250G2-H02
3	5.00 (0.197)	8.20(0.323)	250G2-H03
4	7.50 (0.295)	10.70(0.421)	250G2-H04
5	10.00 (0.394)	13.20 (0.520)	250G2-H05
6	12.50 (0.492)	15.70(0.618)	250G2-H06
7	15.00 (0.591)	18.20(0.717)	250G2-H07
8	17.50 (0.689)	20.70(0.815)	250G2-H08
9	20.00 (0.787)	23.20(0.913)	250G2-H09
10	22.50 (0.886)	25.70(1.012)	250G2-H10
11	25.00 (0.984)	28.20(1.110)	250G2-H11
12	27.50 (1.802)	30.70(1.209)	250G2-H12
13	30.00 (1.181)	33.20(1.307)	250G2-H13
14	32.50 (1.280)	35.70(1.406)	250G2-H14
15	35.00 (1.378)	38.20(1.504)	250G2-H15
16	37.50 (1.476)	40.70(1.602)	250G2-H16
20	47.50 (1.870)	50.70(1.996)	250G2-H20

SPECIFICATIONS
 Current rating : 3A AC,DC
 Voltage rating : 250V AC,DC
 Contact resistance : 20m Ω Max.
 Insulation resistance : 1000M Ω Min.
 Withstanding voltage : 800V AC/minute
 Temperature range : -25°C to +85 °C
 Material : Nylon 66, UL94V-0

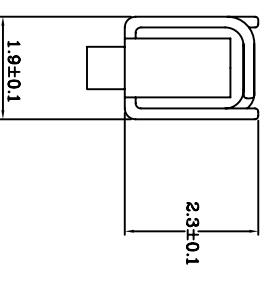
Rev	Description/Date	Drawn By: Storm.li	Customer:	Third angle projection	Units: X± .X±0.30
△		Checked By:Simmon	Part No.: 250G2-HXX	General Dimension Tolerance	.XX±0.20
△		Approved By: Tony	Title: Housing		.XXX±0.10
SGS Report No.:CE/2005/63004C			SOUTH SEA TERMINAL CO.,LTD		



Section A-A



Section B-B

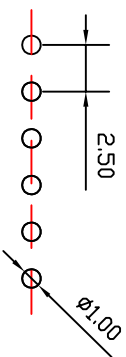
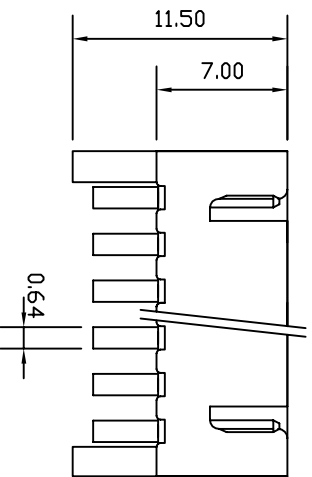
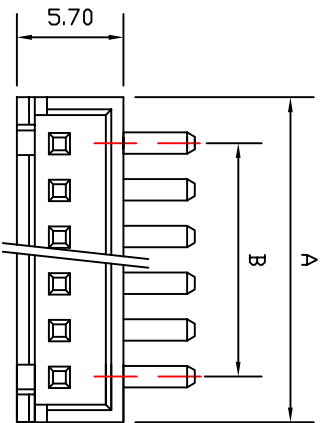


Specifications & Ordering Information:

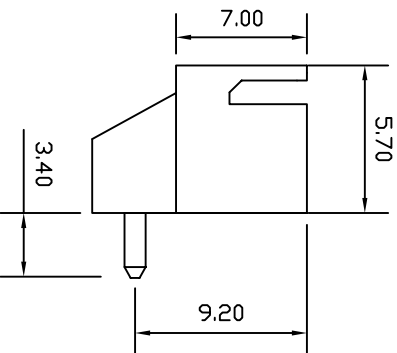
Part No	Thickness	Material	Wire Range	Insulation O.D.	Finish	Qty/reel	Use with
250G2-TP	0.2	Brass	AWG #22~30	1.6-1.13 mm	Pre. Tin-Plated	8,000PCS	250G2-HXX Housing
250G2-TP	0.2	Phosphor Bronze	AWG #22~30	1.6-1.13 mm	Pre. Tin-Plated	8,000PCS	

Rev	Description/Date	Drawn By: Storm.li	Customer:	Third angle projection	Units: mm	X± .X±0.30 .XX±0.20 .XXX±0.10
△		Checked By: Simmon	Part No.: 250G2-TP	General Dimension Tolerance	mm	
△		Approved By: Tony	Title: Terminal			

SGS Report No.: CE/2005/63011B		Title: Terminal		SOUTH SEA TERMINAL CO., LTD	
--------------------------------	--	-----------------	--	------------------------------------	--



Recommard PCB Layout



Poles	Part No.	Dimension mm	
		A	B
2	250G2-R02	7.40	2.50
3	250G2-R03	9.90	5.00
4	250G2-R04	12.40	7.50
5	250G2-R05	14.90	10.00
6	250G2-R06	17.40	12.50
7	250G2-R07	19.90	15.00
8	250G2-R08	22.40	17.50
9	250G2-R09	24.90	20.00
10	250G2-R10	27.40	22.50
11	250G2-R11	29.90	25.00
12	250G2-R12	32.40	27.50
13	250G2-R13	34.90	30.00
14	250G2-R14	37.40	32.50
15	250G2-R15	39.90	35.00
16	250G2-R16	42.40	37.50
17	250G2-R17	44.90	40.00
18	250G2-R18	47.40	42.50
19	250G2-R19	49.90	45.00
20	250G2-R20	52.40	47.50

Material: NYLON 66 94V-0
 Pin brass Tin-Plated
 Mate with 250G2-H housing
 Current rating:3A AC, DC
 Voltage rating: 250V AC, DC
 Contact resistance:20mΩMax
 Insulation resistance:1000MΩMin
 Withstanding voltage: 800V AC/Minute
 Temperature range:-25? TD +85?
 SQ Pin size: 0.64mm
 PC Board hole: 0.9mm dia
 PC Board thickness: 1.6mm

Third angle projection



Units:
mm

General Dimension Tolerance

XX ±0.35
 XXX ±0.25
 XXXX ±0.10

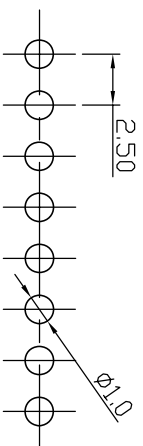
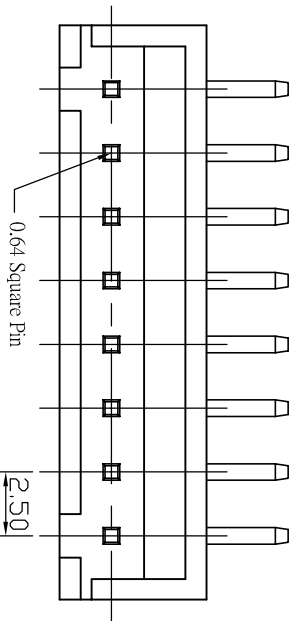
Rev Description/Date
 Drawn By: Storm.li
 Checked By:Simmon
 Approved By: Tony

Customer:
 Part No.:
 Title:

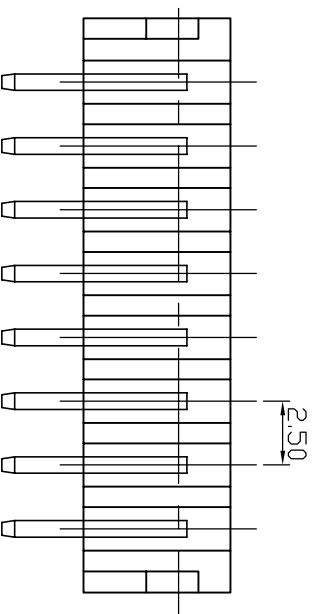
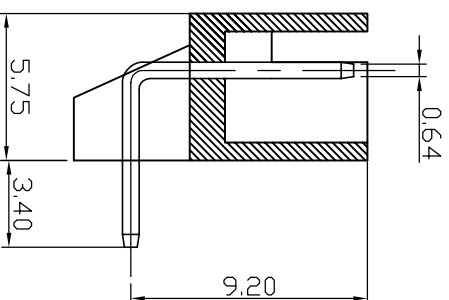
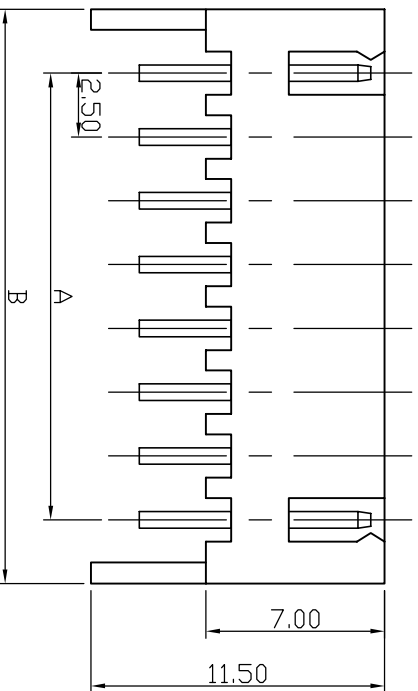
250G2-RXX
 2.50mm Board-in type Wafer

SGS Report No.: CE/2005/63004C

SOUTH SEA TERMINAL CO.,LTD



Recommended P.C. Board hole dimm.



SPECIFICATION:
 Current Rating: 3A AC, DC
 Voltage Rating: 250V AC Maximum
 Operating Temp: -25°C ~ +85°C
 Contact Resistance: 10MΩ Max
 Insulation Resistance: 1000MΩ Min
 Terminal Material: Brass/Tin-plated
 Material: Nylon 66, UL94V-0

Poles	Part No.	Dimension mm (in.)	
		A	B
2	250G2-R02K	2.50 (0.098)	7.50 (0.295)
3	250G2-R03K	5.00 (0.197)	10.00 (0.394)
4	250G2-R04K	7.50 (0.295)	12.50 (0.492)
5	250G2-R05K	10.00 (0.394)	15.00 (0.591)
6	250G2-R06K	12.50 (0.492)	17.50 (0.689)
7	250G2-R07K	15.00 (0.591)	20.00 (0.787)
8	250G2-R08K	17.50 (0.689)	22.50 (0.886)
9	250G2-R09K	20.00 (0.787)	25.00 (0.984)
10	250G2-R10K	22.50 (0.886)	27.50 (1.802)
11	250G2-R11K	25.00 (0.984)	30.00 (1.181)
12	250G2-R12K	27.50 (1.802)	32.50 (1.280)
13	250G2-R13K	30.00 (1.181)	35.00 (1.378)
14	250G2-R14K	32.50 (1.280)	37.50 (1.476)
15	250G2-R15K	35.00 (1.378)	40.00 (1.575)
16	250G2-R16K	37.50 (1.476)	42.50 (1.673)
17	250G2-R17K	40.00 (1.575)	45.00 (1.772)
18	250G2-R18K	42.50 (1.673)	47.50 (1.870)
19	250G2-R19K	45.00 (1.772)	50.00 (1.969)
20	250G2-R20K	47.50 (1.870)	52.50 (2.067)

Third angle projection



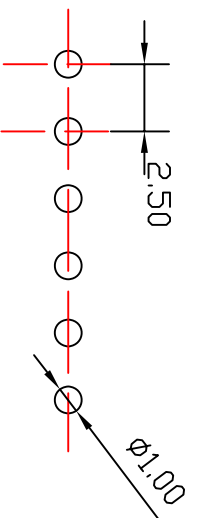
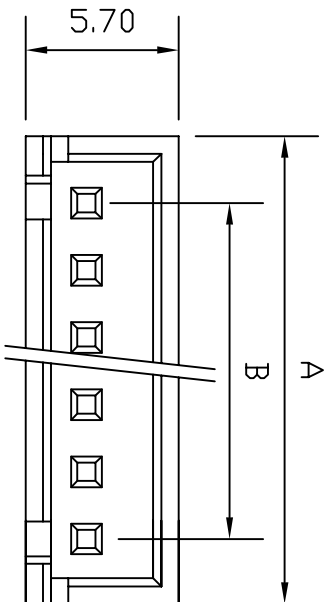
Units:
mm

General Dimension Tolerance

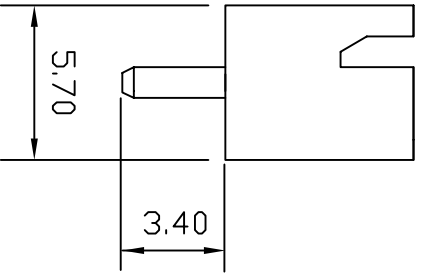
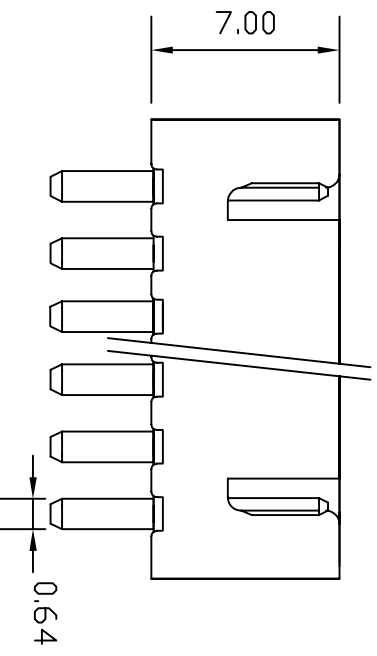
X.X ±0.35 X.XX ±0.25 XXXX ±0.10

Rev	Description/Date	Drawn By: Storm.li	Customer:
△		Checked By: Simmon	Part No.: 250G2-RXXK
△		Approved By: Tony	2.50 mm Wire to Board Header 90° (With Link)
SGS Report No.: CE/2005/63004C		Title:	

SOUTH SEA TERMINAL CO., LTD



Recommamd PCB Layout

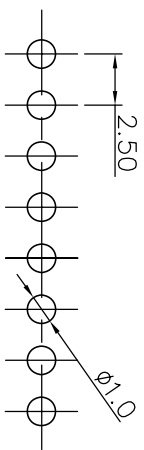
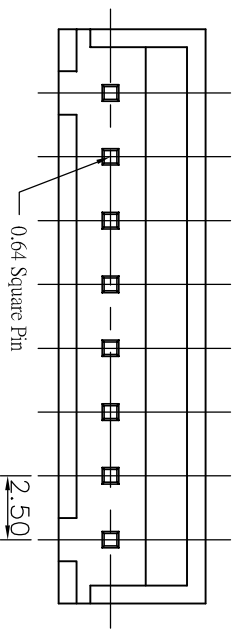


Poles	Part No.	Dimension mm	
		A	B
2	250G2-V02	2.50	7.40
3	250G2-V03	5.00	9.90
4	250G2-V04	7.50	12.40
5	250G2-V05	10.00	14.90
6	250G2-V06	12.50	17.40
7	250G2-V07	15.00	19.90
8	250G2-V08	17.50	22.40
9	250G2-V09	20.00	24.90
10	250G2-V10	22.50	27.40
11	250G2-V11	25.00	29.90
12	250G2-V12	27.50	32.40
13	250G2-V13	30.00	34.90
14	250G2-V14	32.50	37.40
15	250G2-V15	35.00	39.90
16	250G2-V16	37.50	42.40
17	250G2-V17	40.00	44.90
18	250G2-V18	42.50	47.40
19	250G2-V19	45.00	49.90
20	250G2-V20	47.50	52.40

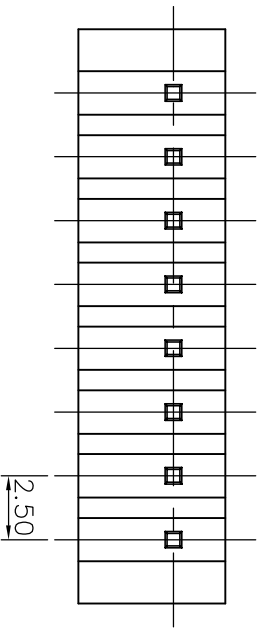
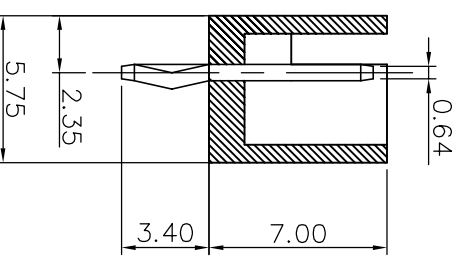
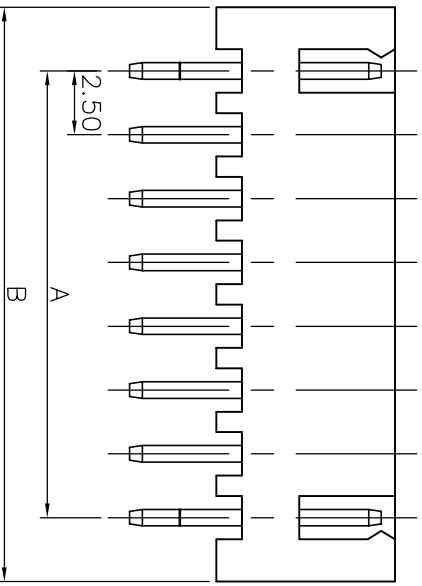
Material: NYLON 66 94V-0
 Pin brass Tin-Plated
 Mate with 250G2-H housing
 Current rating: 3A AC, DC
 Voltage rating: 250V AC, DC
 Contact resistance: 20mΩ Max
 Insulation resistance: 1000MΩ Min
 Withstanding voltage: 800V AC/Minute
 Temperature range: -25? TD +85?
 SQ Pin size: 0.64mm
 PC Board hole: 0.9mm dia
 PC Board thickness: 1.6mm

Rev	Description/Date	Drawn By: Storm.li	Customer:	Third angle projection	Units: mm
△		Checked By: Simmon	Part No.: 250G2-VXX		XXX XXX XXXX ±0.35 ±0.25 ±0.10
△		Approved By: Tony	Title: 2.50mm Board-in type Wafer		
SGS Report No.: CE/2005/63004C					

SOUTH SEA TERMINAL CO., LTD



Recommended P.C.Board hole diam.



SPECIFICATION:
 Current Rating: 3A AC, DC
 Voltage Rating: 250V AC Maximum
 Operating Temp: -25°C ~ +85°C
 Contact Resistance: 10MΩ Max
 Insulation Resistance: 1000MΩ Min
 Terminal Material: Brass/Tin-plated
 Material: Nylon 66, UL94V-0

Poles	Part No.	Dimension mm (in.)	
		A	B
2	250G2-V02K	2.50 (0.098)	7.50 (0.295)
3	250G2-V03K	5.00 (0.197)	10.00 (0.394)
4	250G2-V04K	7.50 (0.295)	12.50 (0.492)
5	250G2-V05K	10.00 (0.394)	15.00 (0.591)
6	250G2-V06K	12.50 (0.492)	17.50 (0.689)
7	250G2-V07K	15.00 (0.591)	20.00 (0.787)
8	250G2-V08K	17.50 (0.689)	22.50 (0.886)
9	250G2-V09K	20.00 (0.787)	25.00 (0.984)
10	250G2-V10K	22.50 (0.886)	27.50 (1.802)
11	250G2-V11K	25.00 (0.984)	30.00 (1.181)
12	250G2-V12K	27.50 (1.802)	32.50 (1.280)
13	250G2-V13K	30.00 (1.181)	35.00 (1.378)
14	250G2-V14K	32.50 (1.280)	37.50 (1.476)
15	250G2-V15K	35.00 (1.378)	40.00 (1.575)
16	250G2-V16K	37.50 (1.476)	42.50 (1.673)
17	250G2-V17K	40.00 (1.575)	45.00 (1.772)
18	250G2-V18K	42.50 (1.673)	47.50 (1.870)
19	250G2-V19K	45.00 (1.772)	50.00 (1.969)
20	250G2-V20K	47.50 (1.870)	52.50 (2.067)

Rev	Description/Date	Drawn By: Storm.li	Customer:	Third angle projection	Units: mm
△		Checked By: Simmon	Part No.: 250G2-VXXK	General Dimension Tolerance	X.X ±0.35 X.XX ±0.25 XXXX ±0.10
△		Approved By: Tony	Title: 2.50 mm Wire to Board Header 180° (With klnk)		
SGS Report No.: CE/2005/63004C					

SOUTH SEA TERMINAL CO., LTD