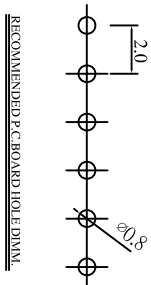
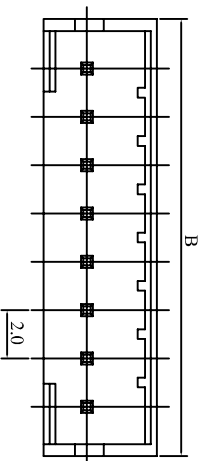


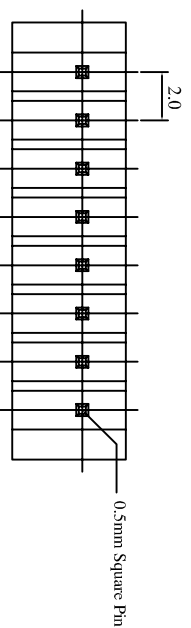
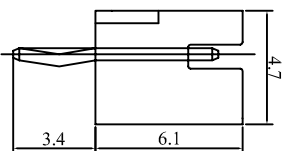
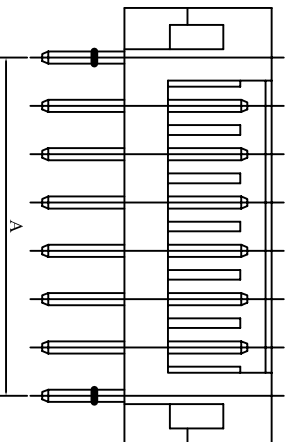
Specifications & Ordering Information:

Part No	Thickness	Material	Wire Range	Insulation O.D.	Finish	Qty/reel	Use with
200G1-TP	0.2	Phosphor Bronze	AWG #24~30	1.4-1.13 mm	Pre. Tin-Plated	10,000PCS	200G1-HXX

Rev	Description/Date	Drawn By: Storm.li	Customer:	Third angle projection	Units: mm
△		Checked By: Simmon	Part No.: 200G1-TP	General Dimension Tolerance	X.X ±0.25 X.XX ±0.1 XXXX ±0.08
△		Approved By: Tony	Title: 2.00mm Wire to Board Terminal	<b>SOUTH SEA TERMINAL CO., LTD</b>	
SGS Report No.: CE/2005/63011B					



RECOMMENDED PCB HOLE DIMS



Poles	Part No.	Dimension mm (in.)	
		A	B
2	200G1-V02	2.0(0.079)	6.1(0.240)
3	200G1-V03	4.0(0.157)	8.1(0.318)
4	200G1-V04	6.0(0.236)	10.1(0.397)
5	200G1-V05	8.0(0.315)	12.1(0.476)
6	200G1-V06	10.0(0.394)	14.1(0.555)
7	200G1-V07	12.0(0.472)	16.1(0.634)
8	200G1-V08	14.0(0.551)	18.1(0.713)
9	200G1-V09	16.0(0.630)	20.1(0.791)
10	200G1-V10	18.0(0.709)	22.1(0.870)
11	200G1-V11	20.0(0.787)	24.1(0.949)
12	200G1-V12	22.0(0.886)	26.1(1.028)
13	200G1-V13	24.0(0.945)	28.1(1.106)
14	200G1-V14	26.0(1.024)	30.1(1.185)
15	200G1-V15	28.0(1.102)	32.1(1.263)

Materials: Nylon66 UL94V-0  
 Pin Brass Tin-plated  
 Mate with:200G1-HXXX Series housing  
 Current rating: 2A AC,DC  
 Voltage rating: 100V AC,DC  
 Contact resistance:20mΩMax  
 Insulation resistance:1000MΩMin  
 Withstanding voltage: 800V AC/Minute  
 Temperature range: -25°C to +85°C  
 SQ Pin size:0.5 mm  
 PC Board hole:0.8mm Dia  
 PC Board thickness:0.8 to 1.6 mm

Rev Description/Date Drawn By: Storm.li

Checked By:Simmon  
 Approved By: Tony

Customer:

Part No.:

Title:

Third angle projection

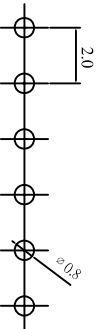
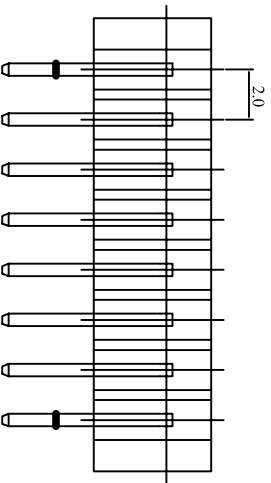
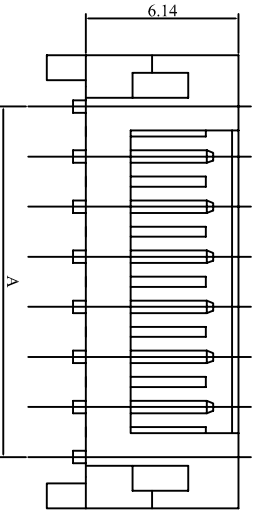
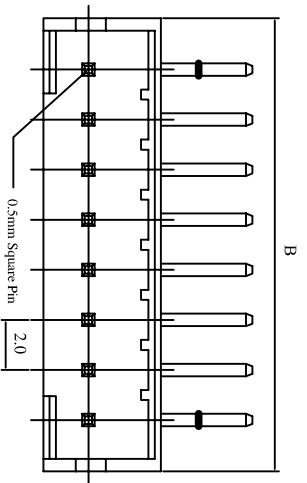
General Dimension Tolerance

Units: X±  
 .XX±0.20  
 .XXX±0.10

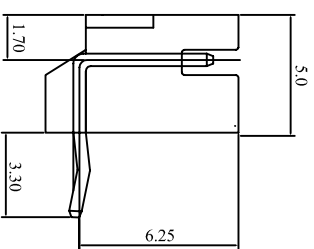
SGS Report No.:CE/2005/53726D

**SOUTH SEA TERMINAL CO.,LTD**

1 2 3 4 5 6 7 8 9 10 11 12 13 14



RECOMMENDED P.C. BOARD HOLE DIMM.



Materials: Nylon66 UL94V-0  
 Pin Brass Tin-plated  
 Mate with: 200G1-HXX Series housing  
 Current rating: 2A AC,DC  
 Voltage rating: 100V AC,DC  
 Contact resistance: 20mΩ Max  
 Insulation resistance: 1000MΩ Min  
 Withstanding voltage: 800V AC/Minute  
 Temperature range: -25°C to +85°C  
 SQ Pin size: 0.5 mm  
 PC Board hole: 0.8mm Dia  
 PC Board thickness: 0.8 to 1.6 mm

Poles	Part No.	Dimension mm (in.)	
		A	B
2	200G1-R02	2.0(0.079)	6.04(0.237)
3	200G1-R03	4.0(0.157)	8.04(0.316)
4	200G1-R04	6.0(0.236)	10.04(0.395)
5	200G1-R05	8.0(0.315)	12.04(0.473)
6	200G1-R06	10.0(0.394)	14.06(0.473)
7	200G1-R07	12.0(0.472)	16.06(0.631)
8	200G1-R08	14.0(0.551)	18.08(0.711)
9	200G1-R09	16.0(0.630)	20.08(0.790)
10	200G1-R10	18.0(0.709)	22.10(0.870)
11	200G1-R11	20.0(0.787)	24.10(0.949)
12	200G1-R12	22.0(0.886)	26.12(1.027)
13	200G1-R13	24.0(0.945)	28.12(1.106)
14	200G1-R14	26.0(1.024)	30.14(1.203)
15	200G1-R15	28.0(1.102)	32.14(1.283)

Rev	Description/Date	Drawn By: Storm.li
△		Checked By: Simmon
△		Approved By: Tony

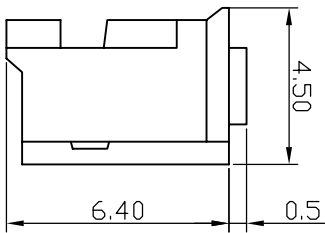
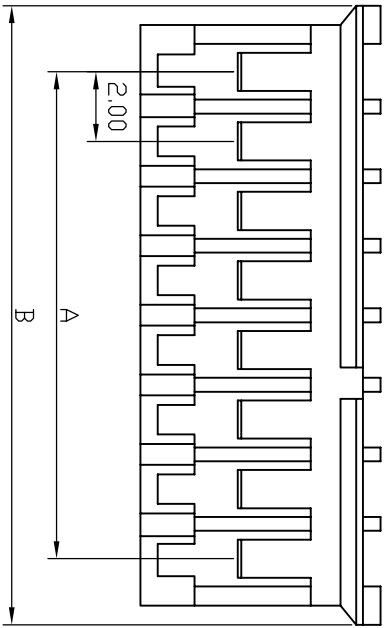
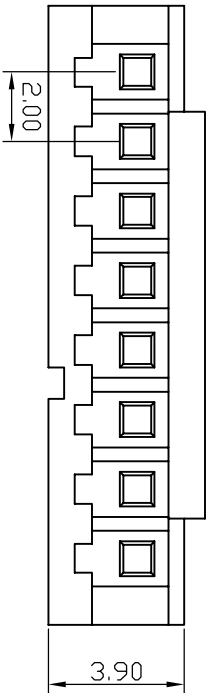
Customer:	
Part No.:	200G1-RXX
Title:	2.00mm pitch 90° Wafer

Third angle projection

General Dimension Tolerance	Units: mm	X± X±0.30 .XX±0.20 .XXX±0.10
-----------------------------	-----------	---------------------------------------

SGS Report No.: CE/2005/537261D

**SOUTH SEA TERMINAL CO., LTD**



Poles	Part No.	Dimension mm (in.)	
		A	B
2	200G1-H02	2.00	5.60
3	200G1-H03	4.00	7.60
4	200G1-H04	6.00	9.60
5	200G1-H05	8.00	11.60
6	200G1-H06	10.00	13.60
7	200G1-H07	12.00	15.60
8	200G1-H08	14.00	17.60
9	200G1-H09	16.00	19.60
10	200G1-H10	18.00	21.60
11	200G1-H11	20.00	23.60
12	200G1-H12	22.00	25.60
13	200G1-H13	24.00	27.60
14	200G1-H14	26.00	29.60
15	200G1-H15	28.00	31.60

## Specifications

### Electrical

Voltage Rating: 100V(AC)  
 Current Rating: 1A  
 Contact Resistance: 20mΩ max.  
 Dielectric Withstanding Voltage: 800V AC/1min.  
 Insulation Resistance: 1000MΩ min.

### Material

Circuits: 2~15  
 Insulator: Nylon 66 UL 94V-0  
 Color: Brown  
 Temperature Range: -25° C~+85° C  
 Applicable PC Board Thickness: 0.8 to 1.6mm

Rev	Description/Date	Drawn By: Storm.li
△		Checked By: Simmon
△		Approved By: Tony

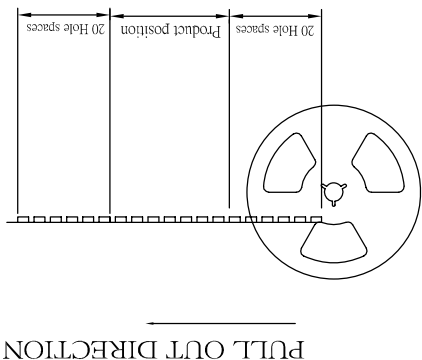
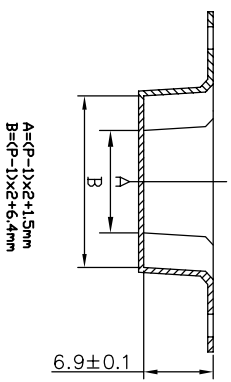
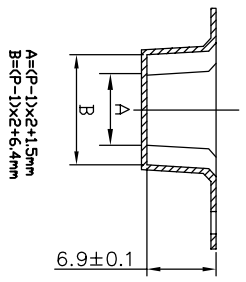
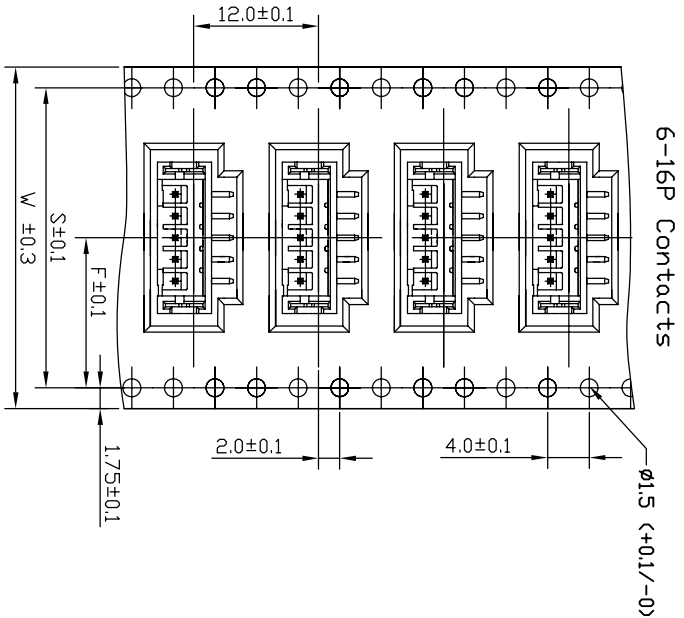
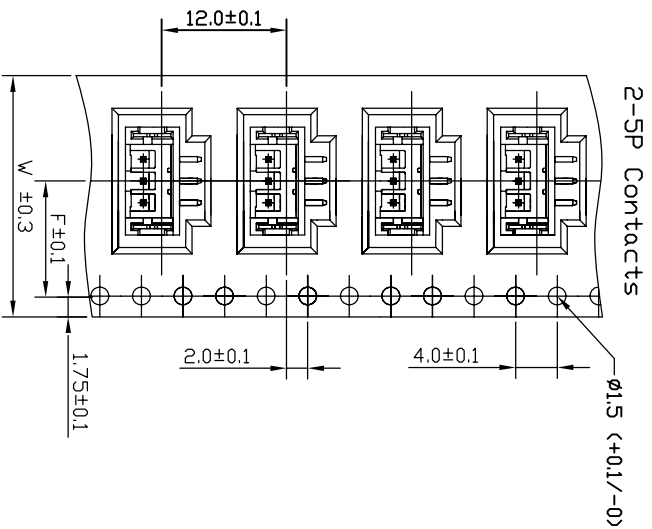
Customer:	Part No.:
	200G1-HXX

Third angle projection	Units:
	.X± .X±0.30 .XX±0.20 .XXX±0.10

SGS Report No.:CE/2005/63004C	Title:
-------------------------------	--------

2.00mm pitch Housing
----------------------

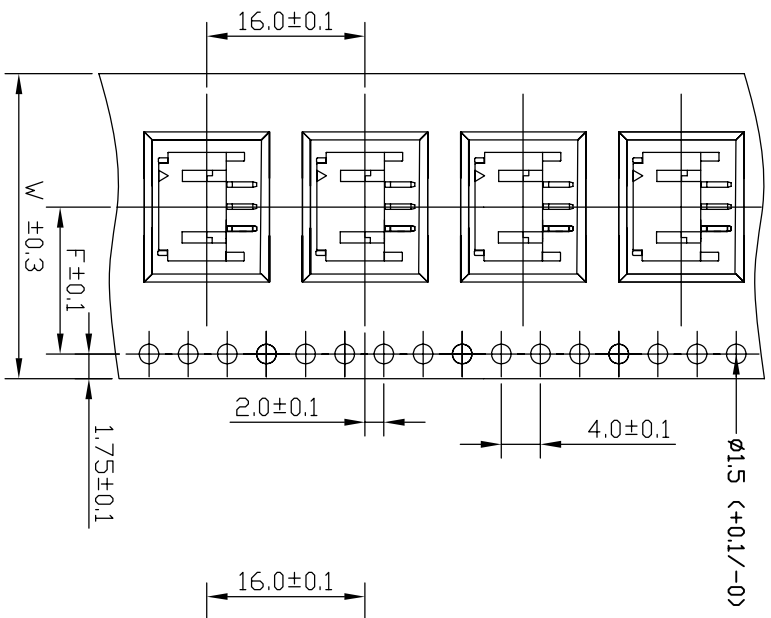
**SOUTH SEA TERMINAL CO., LTD**



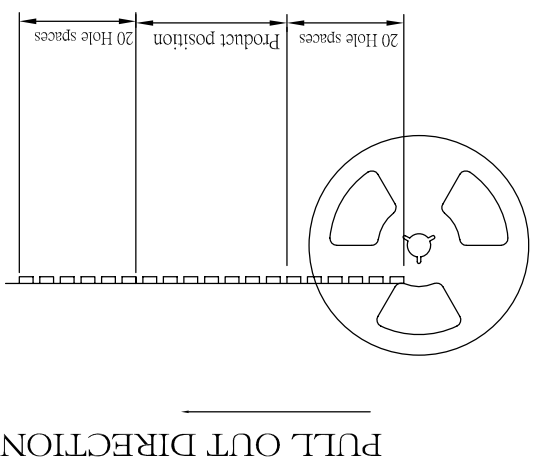
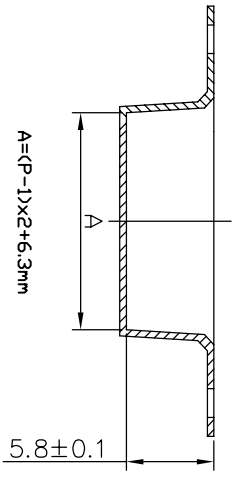
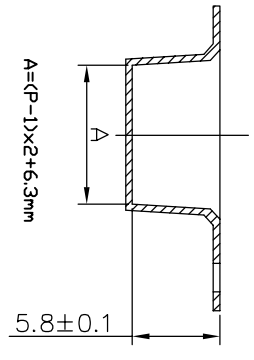
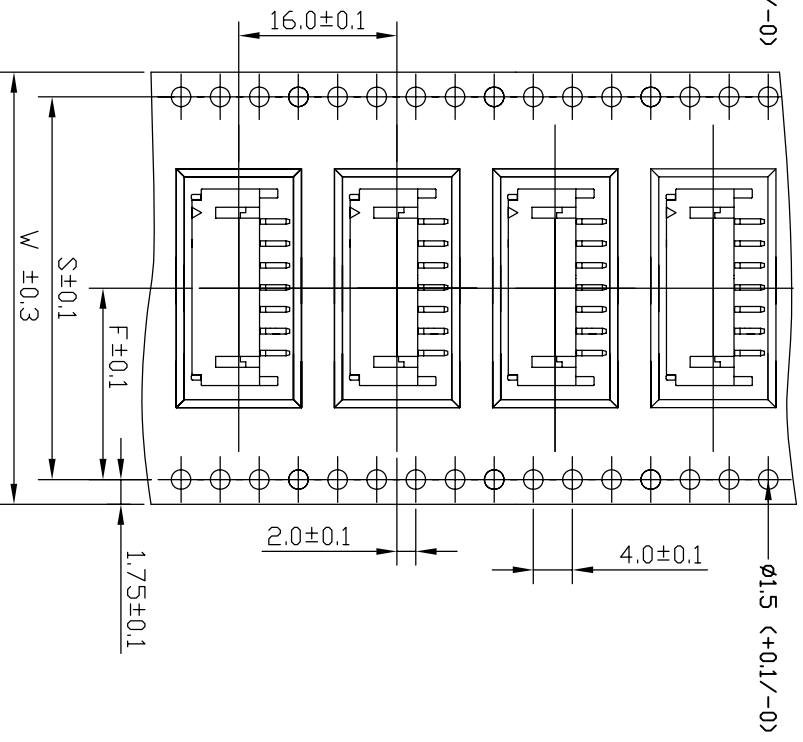
P= Poles	V	F	S	QTY/Reel
02	24	11.5	/	1000PCS
03	24	11.5	/	1000PCS
04	24	11.5	/	1000PCS
05	24	11.5	/	1000PCS
06	32	14.2	28.4	1000PCS
07	32	14.2	28.4	1000PCS
08	32	14.2	28.4	1000PCS
09	32	14.2	28.4	1000PCS
10	44	20.2	40.4	1000PCS
11	44	20.2	40.4	1000PCS
12	44	20.2	40.4	1000PCS
13	44	20.2	40.4	1000PCS
14	44	20.2	40.4	1000PCS
15	56	26.2	52.4	1000PCS
16	56	26.2	52.4	1000PCS

Rev	Description/Date	Drawn By: Storm.li	Customer:	Part No.:	Third angle projection	Units:	X± .X±
△		Checked By: Simmon		200G1-MVXX(T/R)	General Dimension Tolerance	mm	.XX±
△		Approved By: Tony		2.0mm Wire-to-Board Header SMT 180° Type Tape&Reel			.XXX±
SGS Report No.:			Title:	<b>SOUTH SEA TERMINAL CO.,LTD</b>			

2-4P Contacts



5-16P Contacts



P=Poles	W	F	S	Q'TY/Reel
02	24	11.5	/	1000PCS
03	24	11.5	/	1000PCS
04	24	11.5	/	1000PCS
05	32	14.2	28.4	1000PCS
06	32	14.2	28.4	1000PCS
07	32	14.2	28.4	1000PCS
08	44	20.2	40.4	1000PCS
09	44	20.2	40.4	1000PCS
10	44	20.2	40.4	1000PCS
11	44	20.2	40.4	1000PCS
12	44	20.2	40.4	1000PCS
13	44	20.2	40.4	1000PCS
14	56	26.2	52.4	1000PCS
15	56	26.2	52.4	1000PCS
16	56	26.2	52.4	1000PCS

Rev Description/Date

Drawn By: Storm.li

Customer: Third angle projection

Checked By: Simmon

Part No.: 200G1-MRXX(T/R)

General Dimension Tolerance

Approved By: Tony

Title: 2.0mm Wire-to-Board Header SMT 90° Type Tape&Reel

Units: mm

SGS Report No.:

South Sea Terminal Co., Ltd

South Sea Terminal Co., Ltd

1 2 3 4 5 6 7 8 9 10 11 12 13 14

J I H G F E D C B A

X± .X± .XX± .XXX±