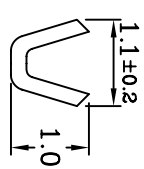
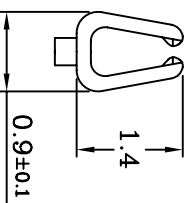


Section A-A



Section B-B

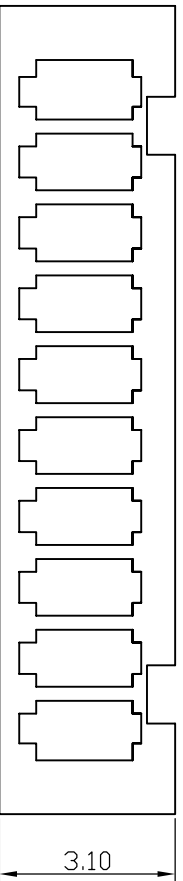


Section C-C

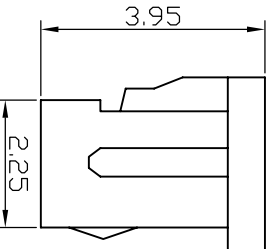
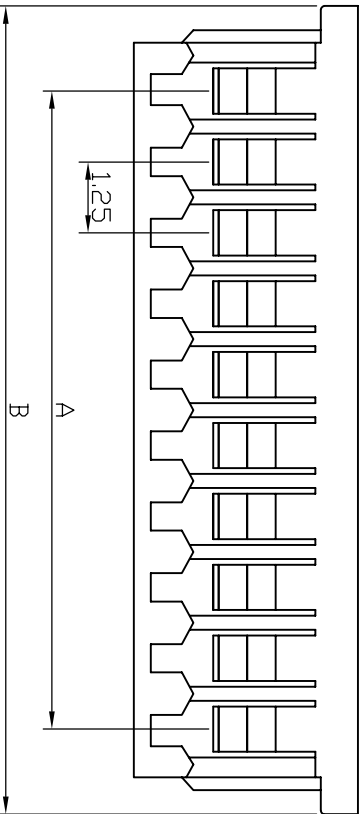
Electrical
 Current Rating: 1A AC; DC
 Voltage Rating: 125V AC/ max.
 Operating Temp.: -25°C ~ +85°C
 Insulation Resistance: 100M Ω / min.
 Dielectric Withstanding Voltage: 250V AC/ min.
 Contact Resistance: 20m Ω / max.

Material
 Terminal material: Phosphor Bronze/ Tin-plated
 Wire Range: 28 to 32AWG

Rev	Description/Date	Drawn By: Storm.li	Customer:	Third angle projection	Units: mm	X± .X±0.50 .XX±0.10 .XXX±
△		Checked By: Simmon	Part No.: 125G1-TP	General Dimension Tolerance		
△		Approved By: Tony	Title: Terminal	SOUTH SEA TERMINAL CO.,LTD		
J	SGS Report No.: CE/2005/63011B					

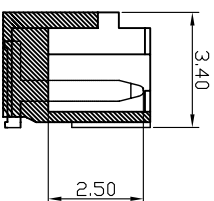
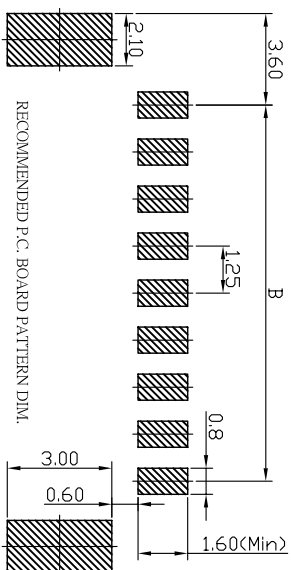
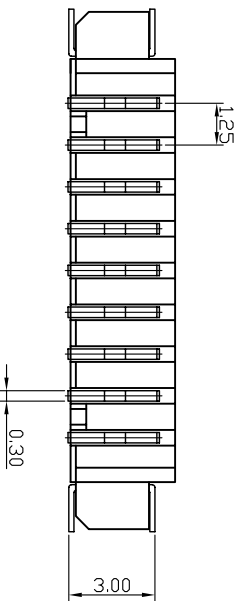
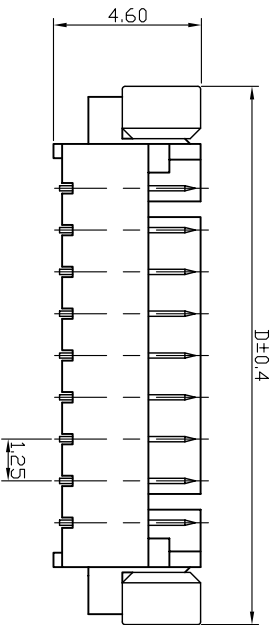
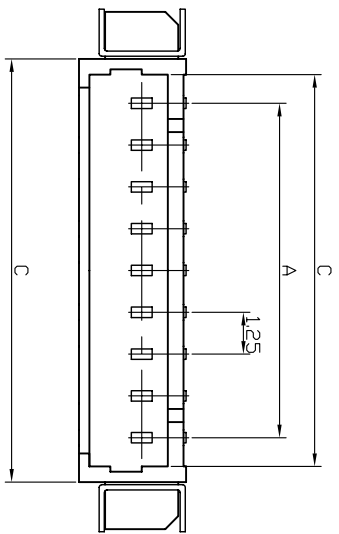


Material: Nylon 66 UL94V-0
 Accept 125G1-TP Terminal
 Mate with 125G1-F(M)Series header
 Current Rating: 1A AC, DC
 Voltage Rating: 125V AC/ max.
 Contact Resistance: 20mΩ/ max.
 Insulation Resistance: 100MΩ/ min.
 Dielectric Withstanding Voltage: 250V AC/ min.
 Operating Temp.: -20°C ~ +85°C



Poles	Part No.	Dimension mm (in.)	
		A	B
2	125G1-H02	1.25(0.049)	4.25(0.167)
3	125G1-H03	2.50(0.098)	5.50(0.217)
4	125G1-H04	3.75(0.148)	6.75(0.266)
5	125G1-H05	5.00(0.197)	8.00(0.315)
6	125G1-H06	6.25(0.246)	9.25(0.364)
7	125G1-H07	7.50(0.295)	10.50(0.413)
8	125G1-H08	8.75(0.344)	11.75(0.463)
9	125G1-H09	10.00(0.394)	13.00(0.512)
10	125G1-H10	11.25(0.443)	14.25(0.561)
11	125G1-H11	12.50(0.492)	15.50(0.610)
12	125G1-H12	13.75(0.541)	16.75(0.659)
13	125G1-H13	15.00(0.591)	18.00(0.709)
14	125G1-H14	16.25(0.640)	19.25(0.758)
15	125G1-H15	17.50(0.689)	20.50(0.807)

Rev	Description/Date	Drawn By: Storm.li	Customer:	Third angle projection	Units: mm	X± .XX±0.30 .XX±0.15 .XXX±0.08
△		Checked By: Simmon	Part No.: 125G1-HXX	General Dimension Tolerance		
△		Approved By: Tony	Title: Housing			
SGS Report No.: CE/2005/40952C			SOUTH SEA TERMINAL CO.,LTD			

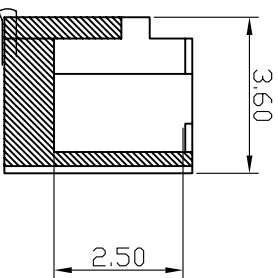
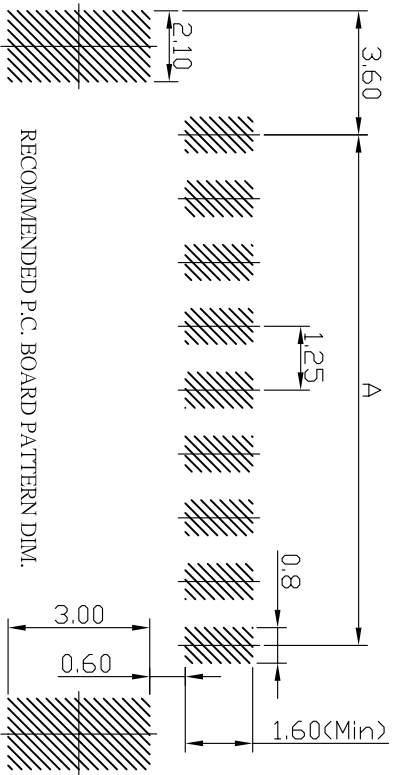
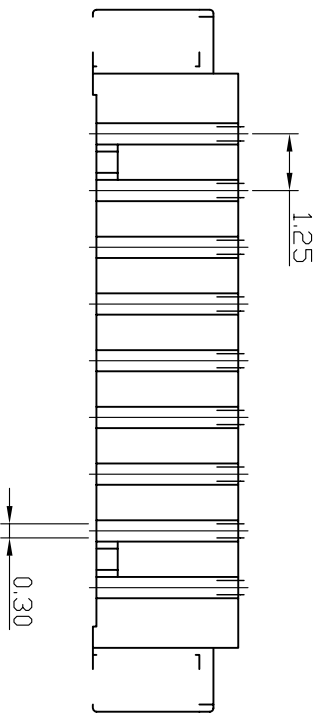
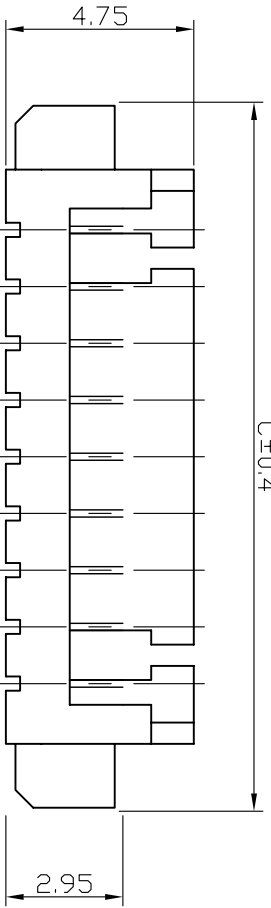
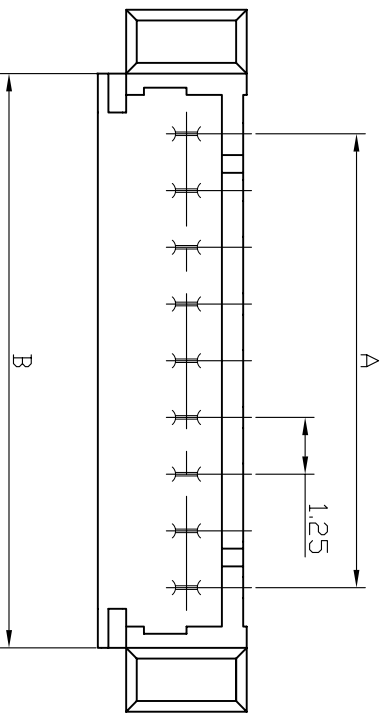


Specification
 Material : Nylon 6T, UL94V-0
 Pin phos Tin-plated
 Current Rating : 1A AC,DC
 Voltage Rating : 125V AC,DC
 Contact Resistance : 20m Ω Max.
 Insulation Resistance : 500M Ω Min.
 Withstanding Voltage : 500V AC/Min.
 Withstanding Voltage : 500V AC/Min.
 Temperature Range : -25°C~+85°C
 PC Board hole: 0.5mm Dia.
 (2-3) P-1 Key, (4-15) P-2 Key

Ordering Information & Dimensions

PART NO.	Dimensions		
	A	B	C
125G1-MR02	1.25	4.15	5.65
125G1-MR03	2.50	5.40	6.90
125G1-MR04	3.75	6.65	8.15
125G1-MR05	5.00	7.90	9.40
125G1-MR06	6.25	9.15	10.65
125G1-MR07	7.50	10.40	11.90
125G1-MR08	8.75	11.65	13.15
125G1-MR09	10.00	12.90	14.40
125G1-MR10	11.25	14.15	15.65
125G1-MR11	12.50	15.40	16.90
125G1-MR12	13.75	16.65	18.15
125G1-MR14	16.25	19.15	20.65
125G1-MR15	17.50	20.40	21.90

Rev	Description/Date	Drawn By: Storm.li	Customer:	Third angle projection	Units: mm	X± .X±0.30 .XX±0.15 .XXX±0.08
△		Checked By:Simmon	Part No.:	General Dimension Tolerance		
△		Approved By: Tony	125G1-MRXX			
SGS Report No.: CE/2005/63612D			1.25mm Wire to Board SMD 90° Type	SOUTH SEA TERMINAL CO.,LTD		



Specification

Material : Nylon 6T, UL94V-0
 Pin phos Tin-plated
 Current Rating : 1A AC,DC
 Voltage Rating : 125V AC,DC
 Contact Resistance : 20mΩ Max.
 Insulation Resistance : 500MΩ Min.
 Withstanding Voltage : 500V AC/Min.
 Withstanding Voltage : 500V AC/Min.
 Temperature Range : -25°C~+85°C
 PC Board hole: 0.5mm Dia.
 (2-3) P-1 Key, (4-15) P-2 Key

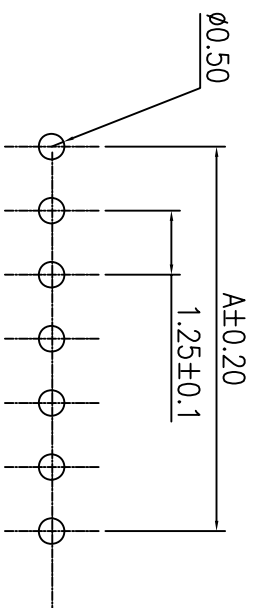
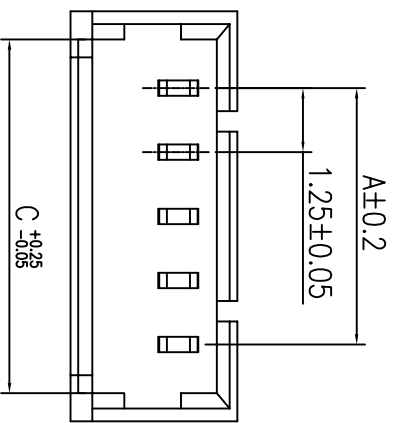
Ordering Information & Dimensions

PART NO.	Dimensions		
	A	B	C
125G1-MV02	1.25	4.15	6.25
125G1-MV03	2.50	5.40	7.50
125G1-MV04	3.75	6.65	8.75
125G1-MV05	5.00	7.90	10.00
125G1-MV06	6.25	9.15	11.25
125G1-MV07	7.50	10.40	12.50
125G1-MV08	8.75	11.65	13.75
125G1-MV09	10.00	12.90	15.00
125G1-MV10	11.25	14.15	16.25
125G1-MV11	12.50	15.40	17.50
125G1-MV12	13.75	16.65	18.75
125G1-MV14	16.25	19.15	21.25
125G1-MV15	17.50	20.40	22.50

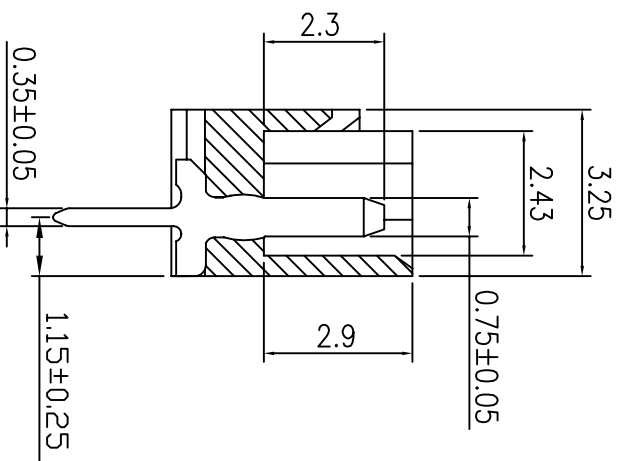
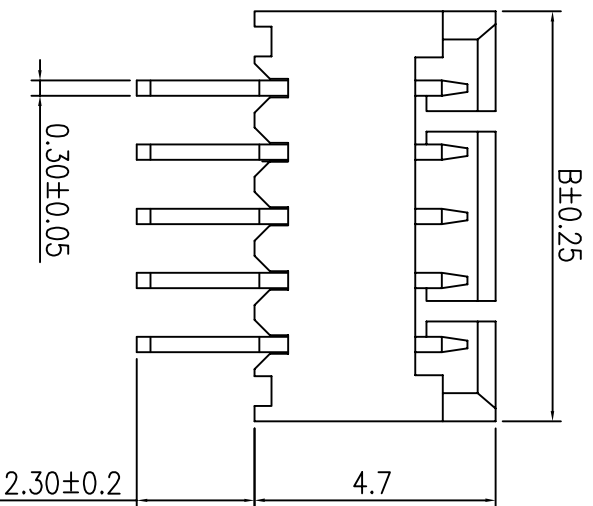
Rev	Description/Date	Drawn By: Storm.li	Customer:
△		Checked By:Simmon	Part No.: 125G1-MVXX
△		Approved By: Tony	1.25mm Wire to Board SMD 180° Type

SGS Report No.: CE/2005/63612D		Title:	Third angle projection		Units: mm		X±	
			General Dimension Tolerance				.X±0.30 .XX±0.15 .XXX±0.08	

SOUTH SEA TERMINAL CO.,LTD



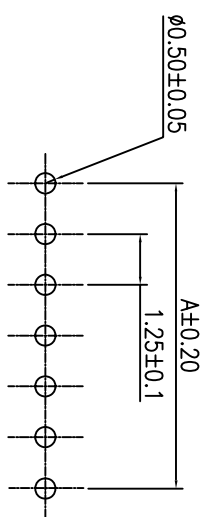
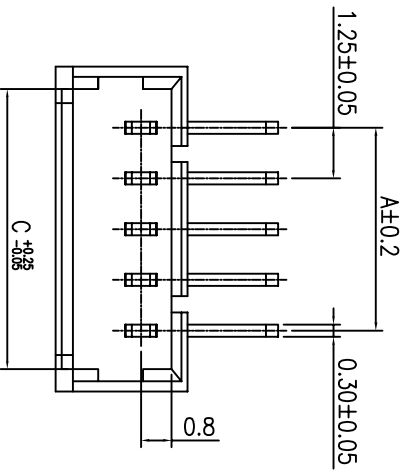
Recommand PCB Layout



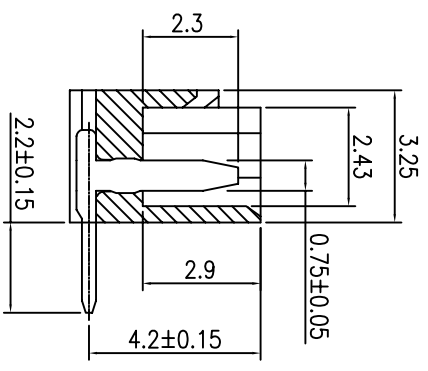
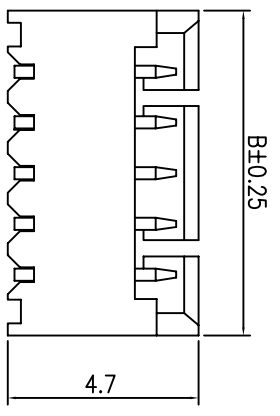
- SPECIFICATIONS**
- Voltage Rating: 250V AC/DC
 - Current Rating: 1A, AC/DC
 - Withstanding Voltage: 250V AC/minute
 - Insulation Resistance: 100MΩ min
 - Temperature Range: -40°C~+85°C
 - Contact Resistance: 20mΩ max
- WAFER**
- Part No.: 125G1-DVXX
 - Poles: 2-15
 - Material: Contact:Brass,Tin Plated
 - Base:PA46 UL94V-0
 - Q'ty: 1,000pcs/PVC Box

Poles	Part No.	Dimension(mm)		
		A	B	C
2	125G1-DV02	1.25	4.25	3.05
3	125G1-DV03	2.50	5.50	4.30
4	125G1-DV04	3.75	6.75	5.55
5	125G1-DV05	5.00	8.00	6.80
6	125G1-DV06	6.25	9.25	8.05
7	125G1-DV07	7.50	10.50	9.30
8	125G1-DV08	8.75	11.75	10.55
9	125G1-DV09	10.00	13.00	11.80
10	125G1-DV10	11.25	14.25	13.05
11	125G1-DV11	12.50	15.50	14.30
12	125G1-DV12	13.75	16.75	15.55
13	125G1-DV13	15.00	18.00	16.80
14	125G1-DV14	16.25	19.25	18.05
15	125G1-DV15	17.50	20.50	19.30

Rev	Description/Date	Drawn By: Storm.li	Customer:	Third angle projection	Units: X± .XX±0.20 .XXX±0.10
△		Checked By:Simmon	Part No.: 125G1-DVXX	General Dimension Tolerance	Units: mm
△		Approved By: Tony	Title: 1.25mm Wire to Board DIP 180° Type		
SGS Report No.:CE/2005/53726D			SOUTH SEA TERMINAL CO.,LTD		



RECOMMAND PCB LAYOUT



- SPECIFICATIONS
- Voltage Rating: 250V AC/DC
 - Current Rating: 1A, AC/DC
 - Withstanding Voltage: 250V AC/minute
 - Insulation Resistance: 100MΩ min
 - Temperature Range: -40°C~+85°C
 - Contact Resistance: 20mΩ max
- WAFER
- Part No.: 125G1-DRXX(DIP Type)
 - Poles: 2-15
 - Material: Contact:Brass,Tin Plated
 - Base:PA46 UL94V-0
 - Q'ty: 1,000pcs/PVC Box

Poles	Part No.	Dimension(mm)		
		A	B	C
2	125G1-DR02	1.25	4.25	3.05
3	125G1-DR03	2.50	5.50	4.30
4	125G1-DR04	3.75	6.75	5.55
5	125G1-DR05	5.00	8.00	6.80
6	125G1-DR06	6.25	9.25	8.05
7	125G1-DR07	7.50	10.50	9.30
8	125G1-DR08	8.75	11.75	10.55
9	125G1-DR09	10.00	13.00	11.80
10	125G1-DR10	11.25	14.25	13.05
11	125G1-DR11	12.50	15.50	14.30
12	125G1-DR12	13.75	16.75	15.55
13	125G1-DR13	15.00	18.00	16.80
14	125G1-DR14	16.25	19.25	18.05
15	125G1-DR15	17.50	20.50	19.30

Rev	Description/Date	Drawn By: Storm.li	Customer:	Third angle projection	Units: X± .X±0.30
△		Checked By:Simmon	Part No.: 125G1-DRXX	General Dimension Tolerance	.XX±0.20
△		Approved By: Tony	Title: 1.25mm Wire to Board DIP 90° Type		.XXX±0.10
J	SGS Report No.: CE/2005/53726D			SOUTH SEA TERMINAL CO.,LTD	
I					
H					
G					
F					
E					
D					
C					
B					
A					
1					
2					
3					
4					
5					
6					
7					
8					
9					
10					
11					
12					
13					
14					