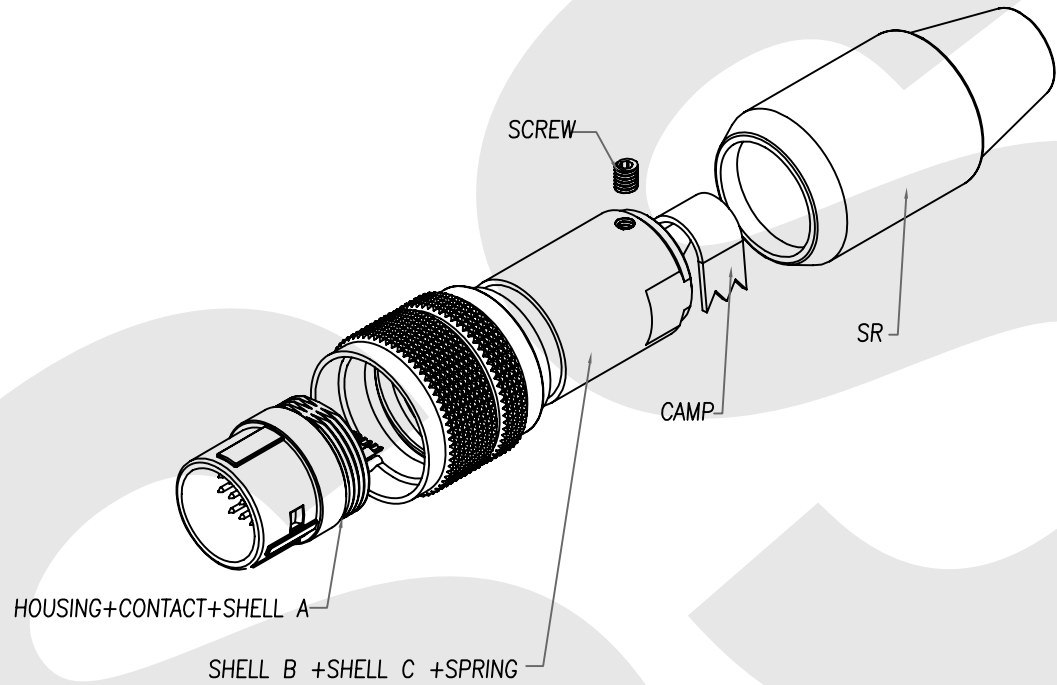
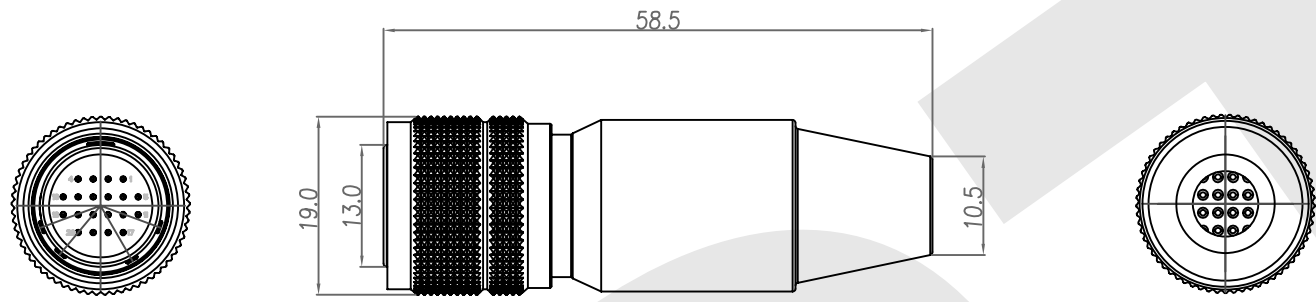


Rev	Revisions	Rev.Drawn	Date
A		Du	18.FEB.2013



1. MATERIAL :

- 1-1. HOUSING : NYLON46 UL94V-0 ; COLOR : BLACK
- 1-2. CONTACT : BRASS
- 1-3. SHELL A : ZINC ALLOY
- 1-4. SHELL B : BRASS
- 1-5. SHELL C : BRASS
- 1-6. SPRING : STAINLESS STEEL
- 1-7. SCREW : ALLOY STEEL
- 1-8. CLAMP : BRASS
- 1-9. SR : NBR ; COLOR : BLACK

2. FINISH :

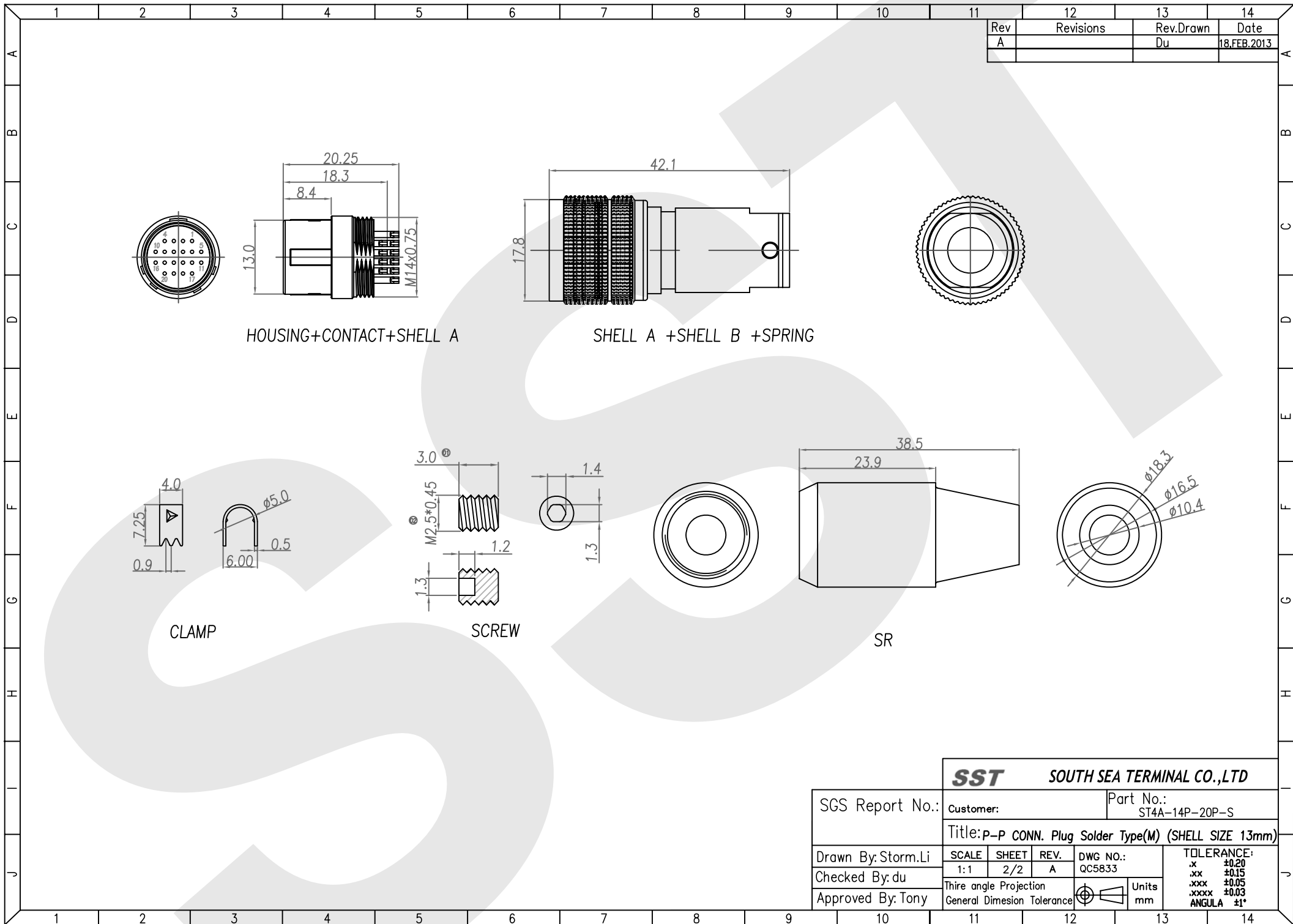
- 2-1. CONTACT : GOLD FLASH
- 2-2. SHELL A : NICKEL
- 2-3. SHELL B : SATIN NICKEL
- 2-4. SHELL C : NICKEL
- 2-5. SPRING : NICKEL
- 2-6. SCREW : NICKEL

3. ORDERING INFORMATION : P-P(PUSH PULL) CONNECTOR

Series ST4A-14 P-20P-S D: Dip type
 S: Solder type
 Dimension of inner thread=M14 P: Male contact
 S: Female contact
 P: Plug
 WR: Wire Receptacle
 BR: Panel / Case Receptacle

SST SOUTH SEA TERMINAL CO.,LTD

SGS Report No.:	Customer:	Part No.:
		ST4A-14P-20P-S
Title: P-P CONN. Plug Solder Type(M) (SHELL SIZE 13mm)		
Drawn By: Storm.Li	SCALE	SHEET
Checked By: du	1:1	1/2
Approved By: Tony	REV.	A
	DWG NO.:	QC5833
	Thire angle Projection	Units
	General Dimesion Tolerance	mm
	TOLERANCE:	
	.x	±0.20
	.xx	±0.15
	.xxx	±0.05
	.xxxx	±0.03
	ANGULA	±1°



Rev	Revisions	Rev.Drawn	Date
A		Du	18.FEB.2013

HOUSING+CONTACT+SHELL A

SHELL A +SHELL B +SPRING

CLAMP

SCREW

SR

SST		SOUTH SEA TERMINAL CO.,LTD	
SGS Report No.:		Customer:	Part No.: ST4A-14P-20P-S
Title: P-P CONN. Plug Solder Type(M) (SHELL SIZE 13mm)			
Drawn By: Storm.Li	SCALE 1:1	SHEET 2/2	REV. A
Checked By: du	DWG NO.: QC5833		TOLERANCE: .x ±0.20 .xx ±0.15 .xxx ±0.05 .xxxx ±0.03 ANGULA ±1°
Approved By: Tony	Third angle Projection		Units mm
General Dimension Tolerance			