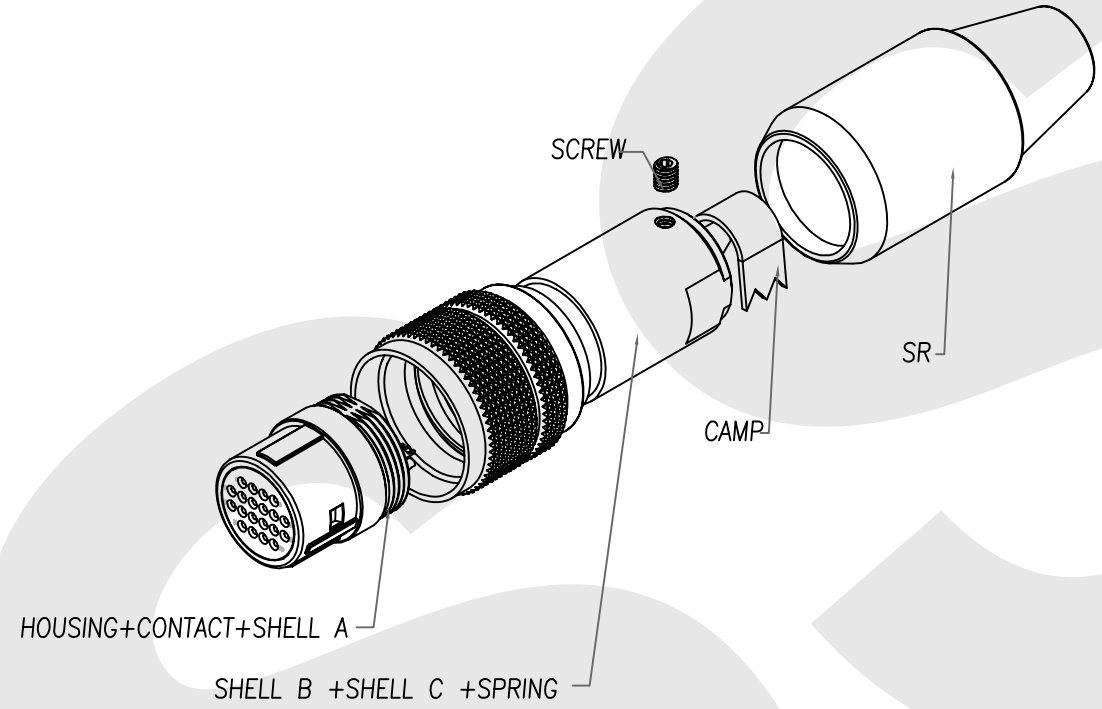
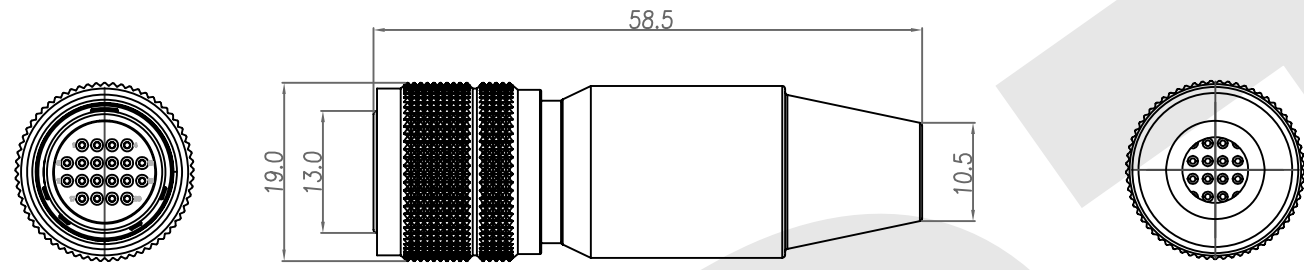


Rev	Revisions	Rev.Drawn	Date
A		Du	18.FEB.2013

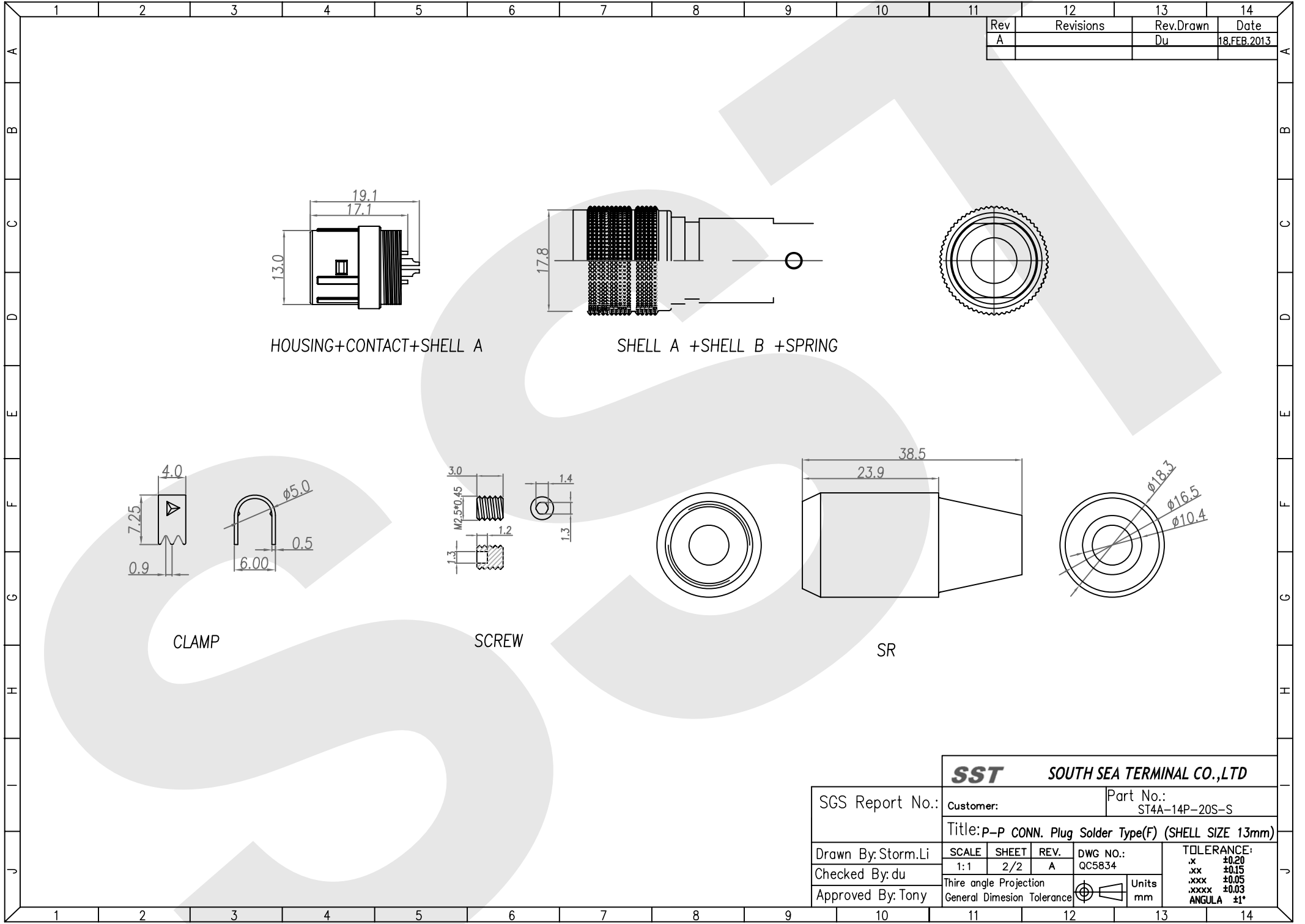


1. MATERIAL :
- 1-1. HOUSING : NYLON46 UL94V-0 ; COLOR : BLACK
  - 1-2. CONTACT : BRASS
  - 1-3. SHELL A : ZINC ALLOY
  - 1-4. SHELL B : BRASS
  - 1-5. SHELL C : BRASS
  - 1-6. SPRING : STAINLESS STEEL
  - 1-7. SCREW : ALLOY STEEL
  - 1-8. CLAMP : BRASS
  - 1-9. SR : NBR ; COLOR : BLACK
2. FINISH :
- 2-1. CONTACT : GOLD FLASH
  - 2-2. SHELL A : NICKEL
  - 2-3. SHELL B : SATIN NICKEL
  - 2-4. SHELL C : NICKEL
  - 2-5. SPRING : NICKEL
  - 2-6. SCREW : NICKEL

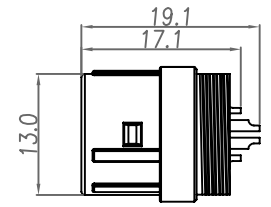
3. ORDERING INFORMATION : P-P(PUSH PULL) CONNECTOR

Series ST4A-14 P-20S-S D: Dip type  
S: Solder type  
Dimension of inner thread=M14 P: Male contact  
S: Female contact  
P: Plug  
WR: Wire Receptacle  
BR: Panel / Case Receptacle

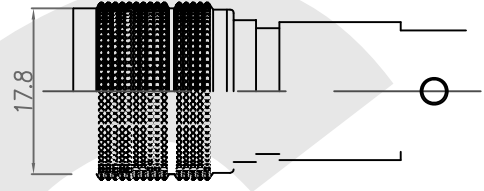
SGS Report No.:		<b>SST</b> SOUTH SEA TERMINAL CO.,LTD		Part No.: ST4A-14P-20S-S	
		Customer:			
Drawn By: Storm.Li	SCALE 1:1	SHEET 1/2	REV. A	DWG NO.: QCS834	TOLERANCE: .x ±0.20 .xx ±0.15 .xxx ±0.05 .xxxx ±0.03 ANGULA ±1°
Checked By: du	Thire angle Projection		Units mm		
Approved By: Tony	General Dimension Tolerance				



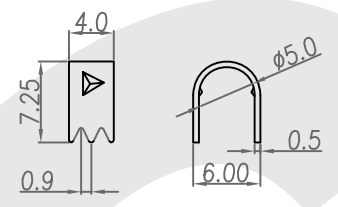
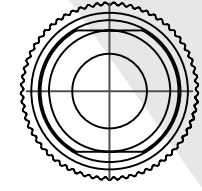
Rev	Revisions	Rev.Drawn	Date
A		Du	18.FEB.2013



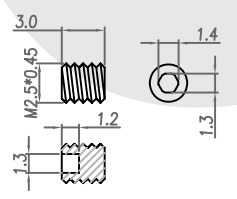
HOUSING+CONTACT+SHELL A



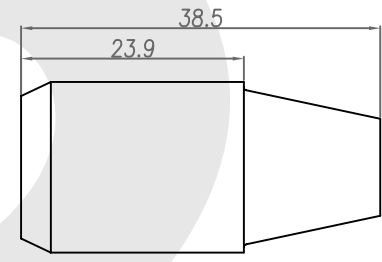
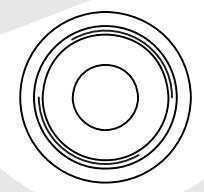
SHELL A +SHELL B +SPRING



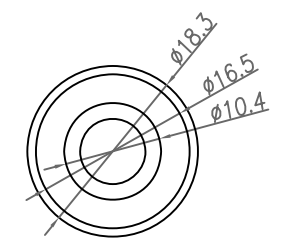
CLAMP



SCREW



SR



		<b>SST</b>		<b>SOUTH SEA TERMINAL CO.,LTD</b>		
SGS Report No.:		Customer:		Part No.: ST4A-14P-20S-S		
Title: P-P CONN. Plug Solder Type(F) (SHELL SIZE 13mm)						
Drawn By: Storm.Li	SCALE 1:1	SHEET 2/2	REV. A	DWG NO.: QC5834	TOLERANCE: .x ±0.20 .xx ±0.15 .xxx ±0.05 .xxxx ±0.03 ANGULA ±1°	
Checked By: du	Thre angle Projection		General Dimesion Tolerance			Units mm
Approved By: Tony						