

| Rev | Revisions | Rev.Drawn | Date |
|-----|-----------|-----------|-------------|
| A | | Du | 24.Aug.2012 |

1. MATERIAL :
- 1-1. HOUSING : NYLON 46 UL94V-0 ; COLOR : BLACK
 - 1-2. CONTACT : BRASS
 - 1-3. SHELL A : Zinc Alloy
 - 1-4. SHELL B : BRASS
 - 1-5. O-RING A : NBR; COLOR : BLACK
 - 1-6. SCREW : ALLOY STEEL
 - 1-7. CLAMP : BRASS
 - 1-8. SR : TPR

2. FINISH :
- 2-1. CONTACT A : 10 MICRO INCHES MIN. GOLD PLATED
 - 2-2. SHELL A : NICKEL PLATED 60u" ~ 100u" OVER ALL
 - 2-3. SHELL B : NICKEL PLATED 60u" ~ 100u" OVER ALL
 - 2-4. SCREW : NICKEL PLATED 60u" ~ 100u" OVER ALL

3. ORDERING INFORMATION : P-P(PUSH PULL) CONNECTOR

Series ST2A-08WR-XXP-S

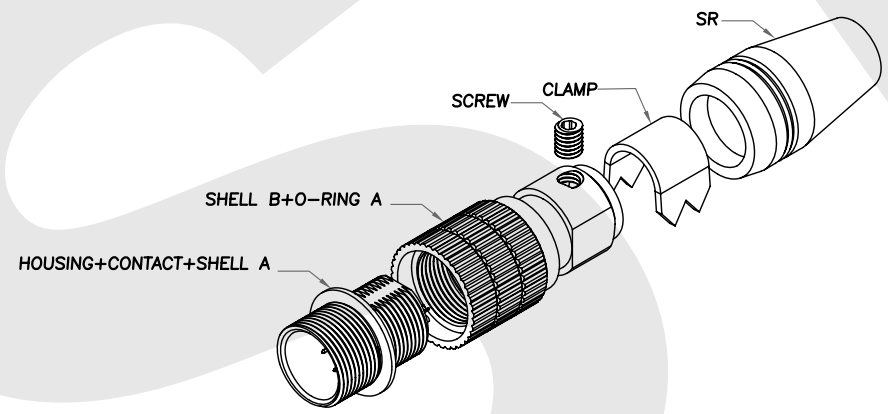
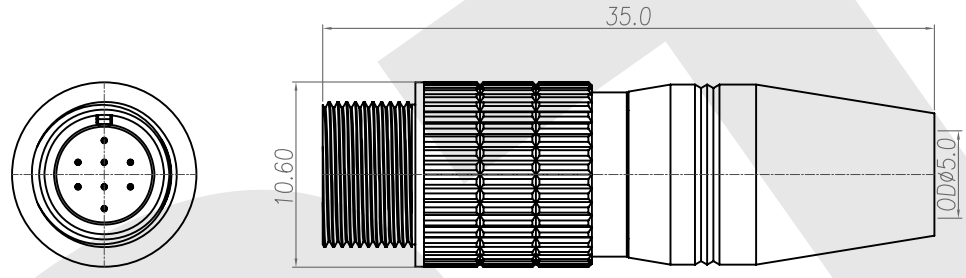
Dimension of inner thread=M8

Poles: P: Plug, S: Solder type

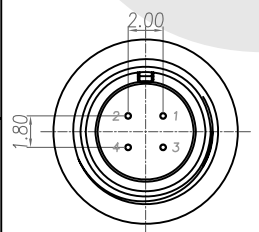
WR: Wire Receptacle, BR: Panel / Case Receptacle

D: Dip type, S: Solder type

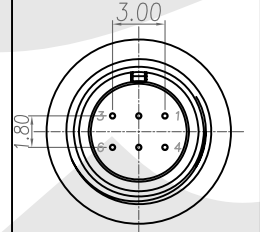
P: Male contact, S: Female contact



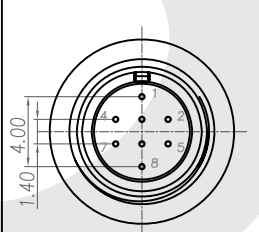
ST2A-08WR-04P-S



ST2A-08WR-06P-S

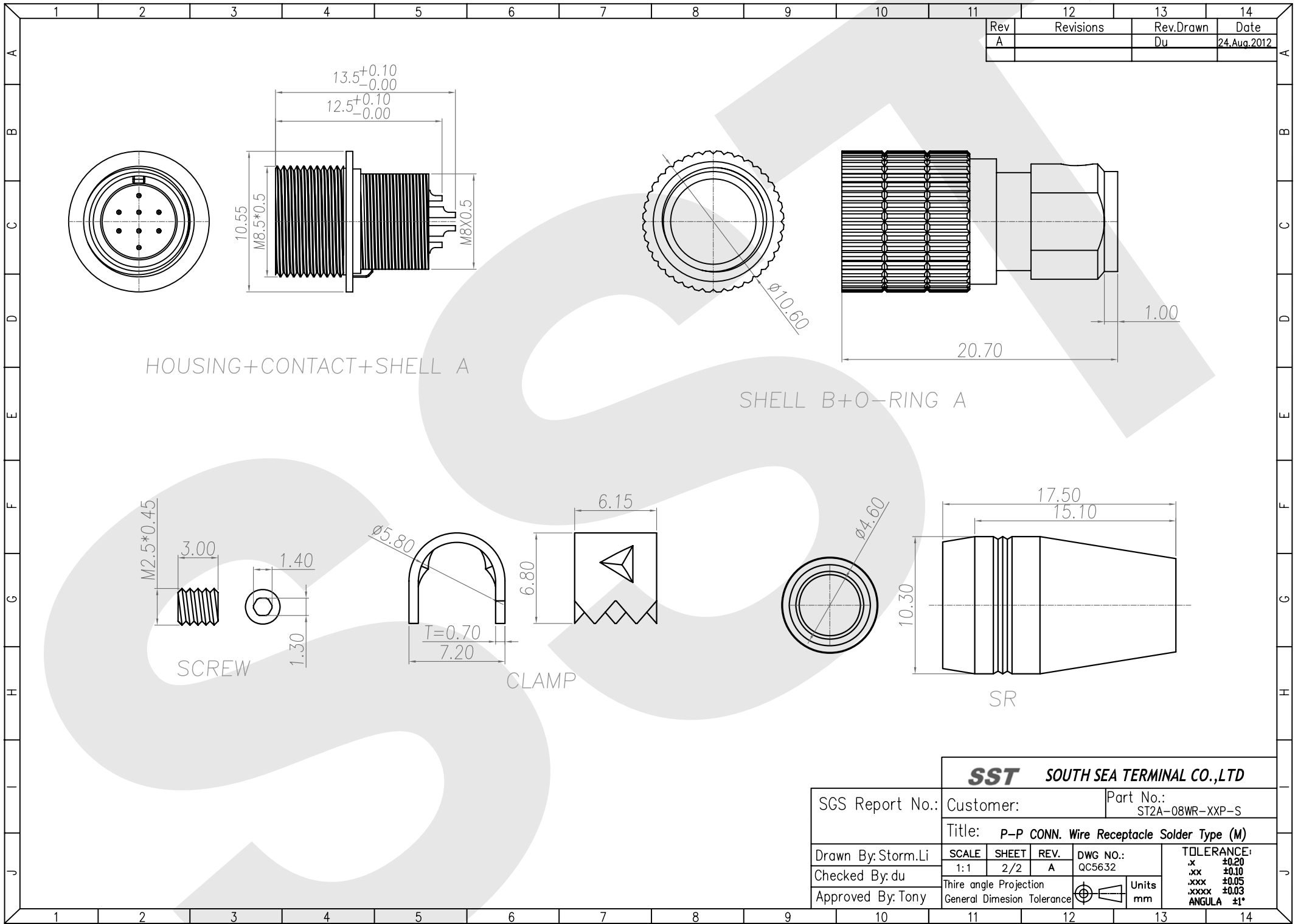


ST2A-08WR-08P-S



SST SOUTH SEA TERMINAL CO.,LTD

| | | |
|--|------------|-----------------|
| SGS Report No.: | Customer: | Part No.: |
| | | ST2A-08WR-XXP-S |
| Title: P-P CONN. Wire Receptacle Solder Type (M) | | |
| Drawn By: Storm.Li | SCALE: 1:1 | SHEET: 1/2 |
| Checked By: du | REV.: | A |
| Approved By: Tony | DWG NO.: | QC5632 |
| Third angle Projection | | Units: mm |
| General Dimension Tolerance | | TOLERANCE: |
| | | .x ±0.20 |
| | | .xx ±0.10 |
| | | .xxx ±0.05 |
| | | .xxxx ±0.03 |
| | | ANGULA ±1° |



| Rev | Revisions | Rev.Drawn | Date |
|-----|-----------|-----------|-------------|
| A | | Du | 24.Aug.2012 |

SST SOUTH SEA TERMINAL CO.,LTD

| | | | | | |
|--|------------------------|-----------|----------------------------|----------|-------------|
| SGS Report No.: | Customer: | Part No.: | ST2A-08WR-XXP-S | | |
| Title: P-P CONN. Wire Receptacle Solder Type (M) | | | | | |
| Drawn By: Storm.Li | SCALE | SHEET | REV. | DWG NO.: | TOLERANCE: |
| Checked By: du | 1:1 | 2/2 | A | QC5632 | .x ±0.20 |
| Approved By: Tony | Thire angle Projection | | General Dimesion Tolerance | | .xx ±0.10 |
| | | | | Units | .xxx ±0.05 |
| | | | | mm | .xxxx ±0.03 |
| | | | | | ANGULA ±1° |