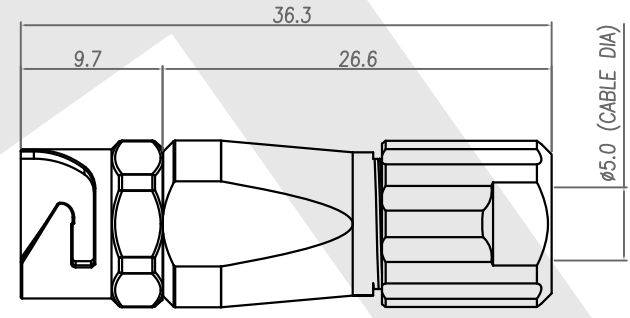
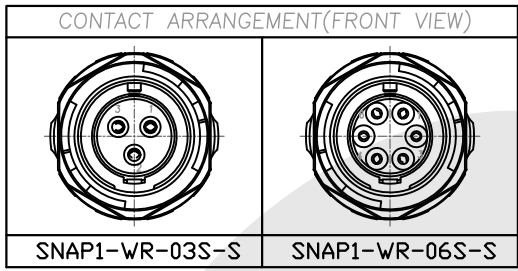


Rev	Revisions	Rev.Drawn	Date
A		Du	22.May.2012

TABLE A



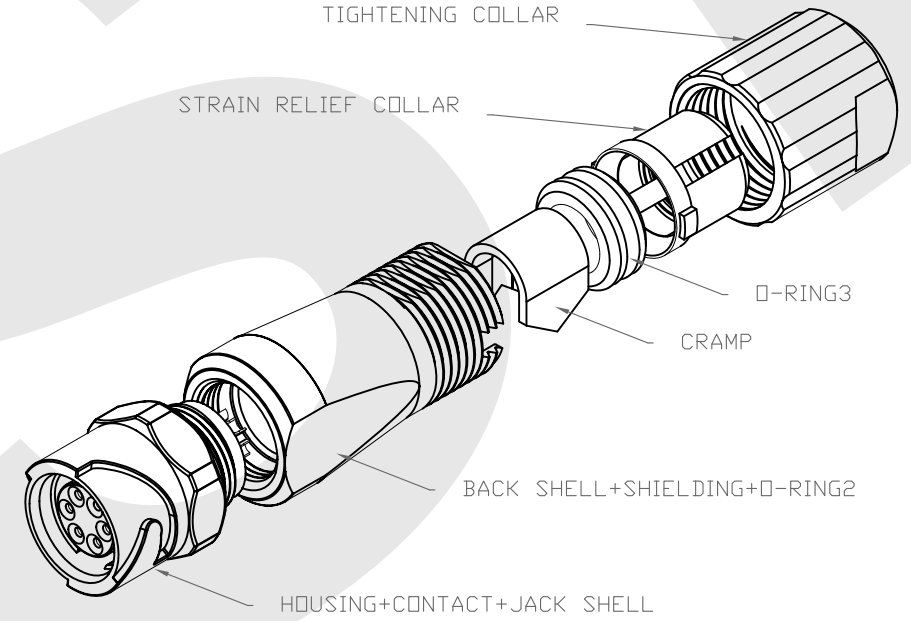
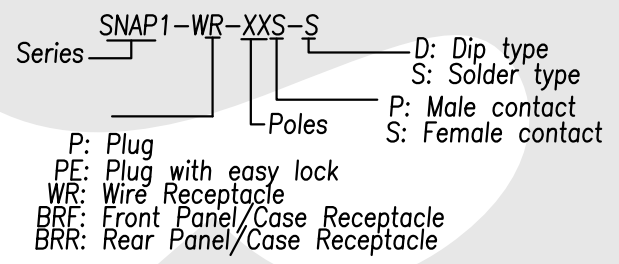
1. MATERIAL :

- 1-1. HOUSING : PPS UL94V-0  
COLOR : BLACK
- 1-2. CONTACT : PHOSPHOR BRONZEC
- 1-3. JCAK SHELL : ZINC ALLOY
- 1-4. LOCKING COLLAR : ZINC ALLOY
- 1-5. BACK SHELL : ZINC ALLOY
- 1-6. SHIELDING : PHOSPHOR BRONZE
- 1-7. O-RING 2 : EPDM
- 1-8. CLAMP : BRASS
- 1-9. O-RING 3 : NBR ; COLOR : BLACK
- 1-11. STRAIN RELIEF COLLAR : NYLON66 UL94V-0 ; COLOR : WHITE
- 1-12. TIGHTENING COLLAR : PPS ; COLOR : BROWN

2. FINISH :

- 2-1. CONTACT : GOLD FLASH
- 2-2. JACK SHELL : NICKEL
- 2-3. BACK SHELL : NICKEL
- 2-4. SHIELDING : NICKEL
- 2-5. CLAMP : NICKEL

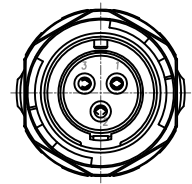
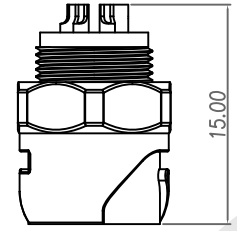
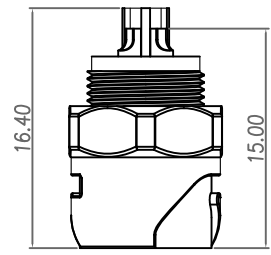
3. ORDERING INFORMATION : WATERPROOF SNAP CONNECTOR



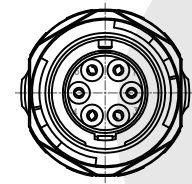
**SST SOUTH SEA TERMINAL CO.,LTD**

SGS Report No.:	Customer:	Part No.:
		SNAP1-WR-XXS-S
Title: Waterproof Snap CONN. Wire Receptacle Solder Type (F)		
Drawn By: Storm.Li	SCALE	SHEET
Checked By: du	1:1	1/2
Approved By: Tony	REV.	A
	DWG NO.:	QC5716
	TOLERANCE:	
	.x ±0.20	
	.xx ±0.10	
	.xxx ±0.05	
	.xxxx ±0.03	
	ANGULA ±1*	

Rev	Revisions	Rev.Drawn	Date
A		Du	22.May.2012

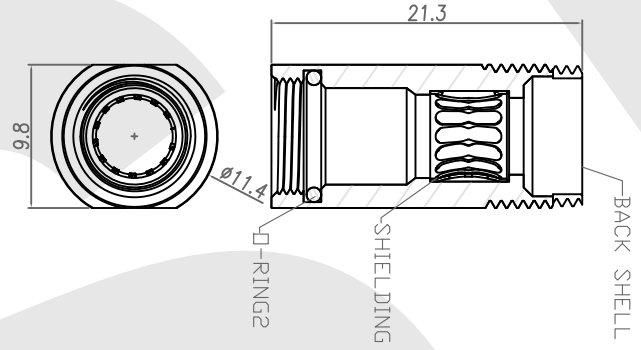


3P

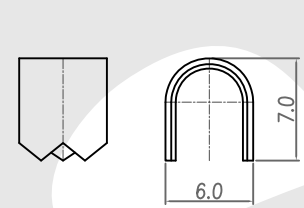


6P

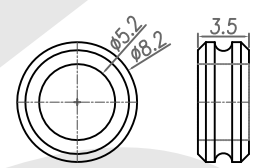
HOUSING+CONTACT+JCAK SHELL



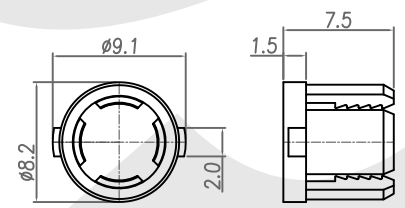
BACK SHELL+SHIELDING+O-RING2



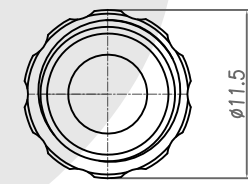
CRAMP



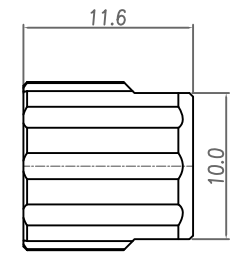
O-RING3



STRAIN RELIEF COLLAR



TIGHTENING COLLAR



**SST SOUTH SEA TERMINAL CO.,LTD**

SGS Report No.:	Customer:	Part No.:	SNAP1-WR-XXS-S		
Title: <b>Waterproof Snap CONN. Wire Receptacle Solder Type (F)</b>					
Drawn By: Storm.Li	SCALE	SHEET	REV.	DWG NO.:	TOLERANCE: .x ±0.20 .xx ±0.10 .xxx ±0.05 .xxxx ±0.03 ANGULA ±1°
Checked By: du	1:1	2/2	A	QC5716	
Approved By: Tony	Three angle Projection		General Dimension Tolerance		