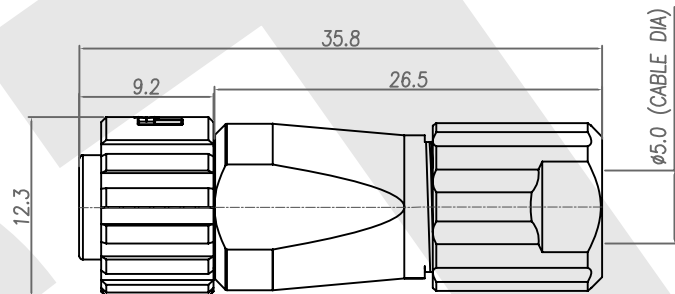
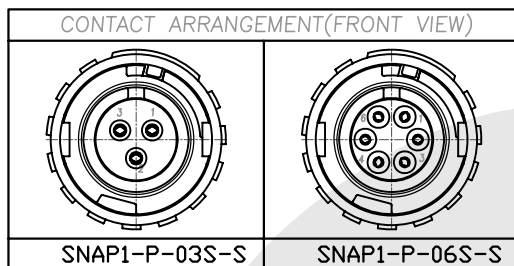


| Rev | Revisions | Rev.Drawn | Date |
|-----|-----------|-----------|-------------|
| A | | Du | 22.May.2012 |

TABLE A



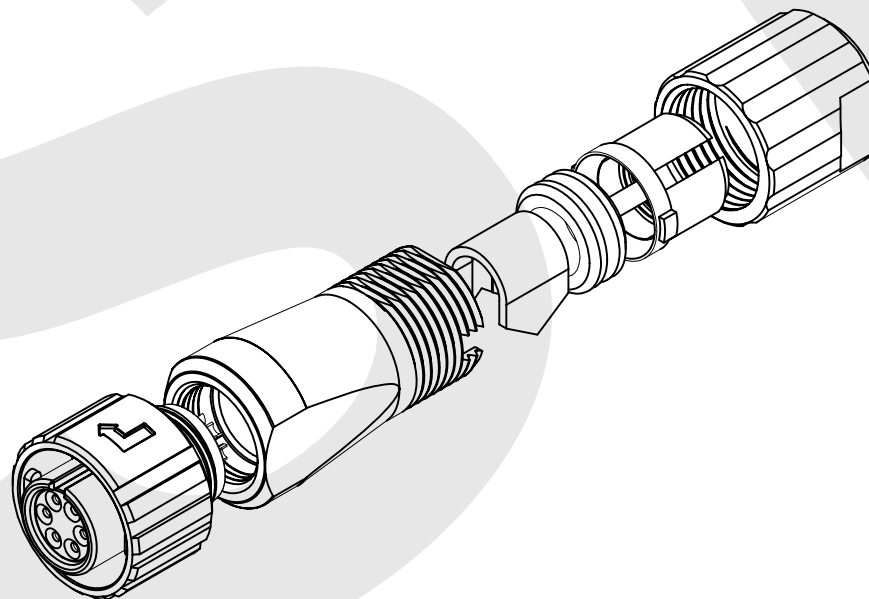
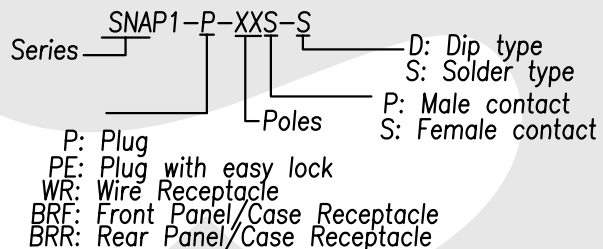
1. MATERIAL :

- 1-1. HOUSING : PPS UL94V-0
COLOR : BLACK
- 1-2. CONTACT : PHOSPHOR BRONZEC
- 1-3. PLUG SHELL : ZINC ALLOY
- 1-4. LOCKING COLLAR : ZINC ALLOY
- 1-5. SPRING1 : STAINLESS STEEL
- 1-6. SPRING2 : STAINLESS STEEL
- 1-7. O-RING 1 : EPDM
- 1-8. BACK SHELL : ZINC ALLOY
- 1-9. SHIELDING : PHOSPHOR BRONZE
- 1-10. O-RING 2 : EPDM
- 1-11. CLAMP : BRASS
- 1-12. O-RING 3 : NBR ; COLOR : BLACK
- 1-13. STRAIN RELIEF COLLAR : NYLON66 UL94V-0 ; COLOR : WHITE
- 1-14. TIGHTENING COLLAR : PPS ; COLOR : BROWN

2. FINISH :

- 2-1. CONTACT : GOLD FLASH
- 2-2. PLUG SHELL : NICKEL
- 2-3. LOCKING COLLAR : NICKEL
- 2-4. BACK SHELL : NICKEL
- 2-5. SHIELDING : NICKEL
- 2-6. CLAMP : NICKEL

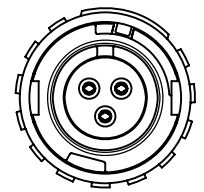
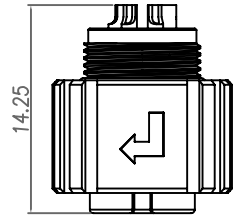
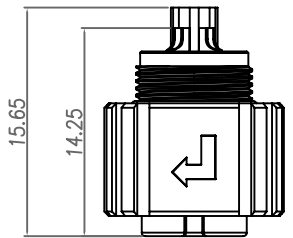
3. ORDERING INFORMATION : WATERPROOF SNAP CONNECTOR



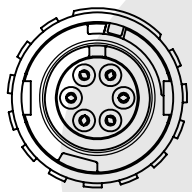
SST SOUTH SEA TERMINAL CO.,LTD

| | | |
|---|-----------|---------------|
| SGS Report No.: | Customer: | Part No.: |
| | | SNAP1-P-XXS-S |
| Title: Waterproof Snap CONN. Plug Solder Type (F) | | |
| Drawn By: Storm.Li | SCALE | SHEET |
| Checked By: du | 1:1 | 1/2 |
| Approved By: Tony | REV. | DWG NO.: |
| | A | QC5714 |
| Thire angle Projection | | TOLERANCE: |
| General Dimesion Tolerance | | .x ±0.20 |
| | | .xx ±0.10 |
| | | .xxx ±0.05 |
| | | .xxxx ±0.03 |
| | | ANGULA ±1° |

| | | | |
|-----|-----------|-----------|-------------|
| Rev | Revisions | Rev.Drawn | Date |
| A | | Du | 22.May.2012 |

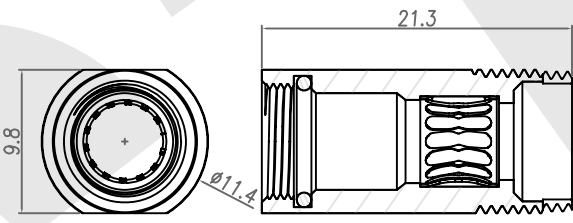


3P

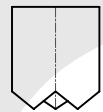


6P

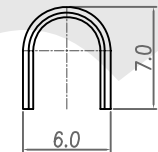
HOUSING+CONTACT+PLUG SHELL+SPRING1+SPRING2+O-RING1



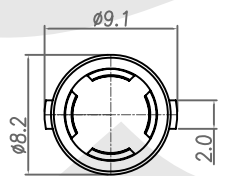
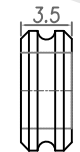
BACK SHELL+SHIELDING+O-RING2



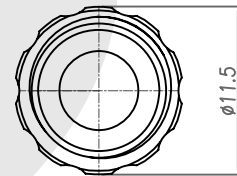
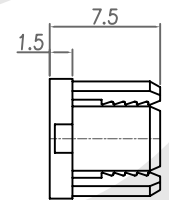
CRAMP



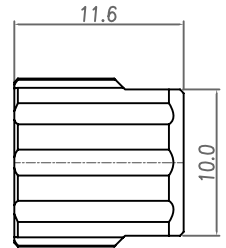
O-RING3



STRAIN RELIEF COLLAR



TIGHTENING COLLAR



SST SOUTH SEA TERMINAL CO.,LTD

| | | |
|---|-----------------------------|---------------|
| SGS Report No.: | Customer: | Part No.: |
| | | SNAP1-P-XXS-S |
| Title: Waterproof Snap CONN. Plug Solder Type (F) | | |
| Drawn By: Storm.Li | SCALE | SHEET |
| Checked By: du | 1:1 | 2/2 |
| Approved By: Tony | REV. | A |
| | DWG NO.: | QC5714 |
| | TOLERANCE: | |
| | .x ±0.20 | |
| | .xx ±0.10 | |
| | .xxx ±0.05 | |
| | .xxxx ±0.03 | |
| | ANGULA ±1° | |
| | Third angle Projection | Units |
| | General Dimension Tolerance | mm |