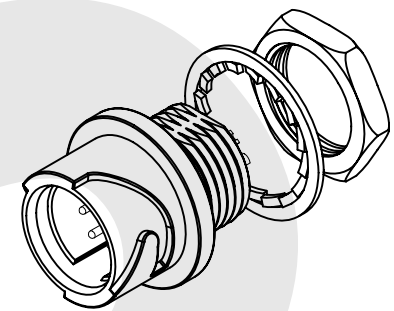
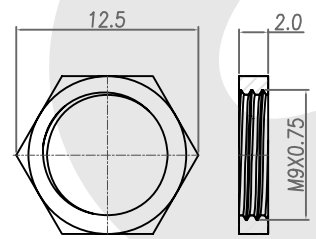
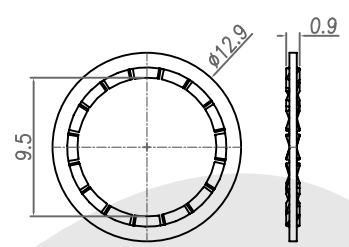
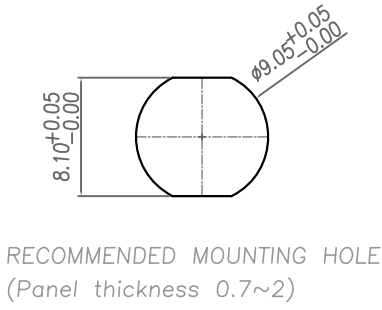
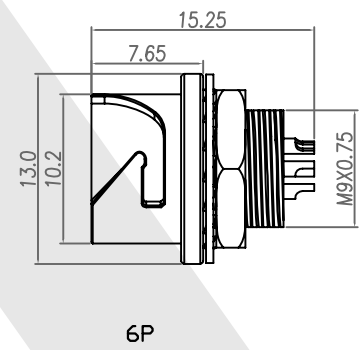
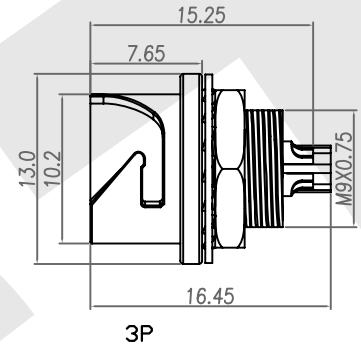


Rev	Revisions	Rev.Drawn	Date
A		Du	22.May.2012

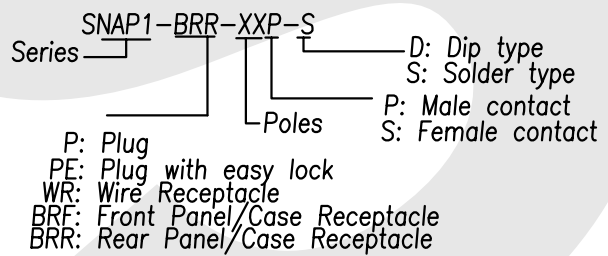
TABLE A

CONTACT ARRANGEMENT(FRONT VIEW)	
SNAP1-BRR-03P-S	SNAP1-BRR-06P-S



- |   |                                |
|---|--------------------------------|
| 1. MATERIAL :                               | 2. FINISH :                    |
| 1-1. HOUSING : PPS UL94V-0<br>COLOR : BLACK | 2-1. CONTACT : GOLD FLASH      |
| 1-2. CONTACT : BRASS                        | 2-2. RECEPTACLE SHELL : NICKEL |
| 1-3. RECEPTACLE SHELL : ZINC ALLOY          | 2-3. WAHSER : NICKEL           |
| 1-4. WAHSER : PHOSPHOR BRONZEC              | 2-4. NUT : NICKEL              |
| 1-5. NUT : BRASS                            |                                |

3. ORDERING INFORMATION : WATERPROOF SNAP CONNECTOR



**SST SOUTH SEA TERMINAL CO.,LTD**

SGS Report No.:	Customer:	Part No.:	SNAP1-BRR-XXP-S
Title: Waterproof Snap CONN. Rear Panel/Case Receptacle Solder Type (M)			
Drawn By: Storm.Li	SCALE: 1:1	SHEET: 1/1	REV. A
Checked By: du	DWG NO.: QC5717		TOLERANCE:
Approved By: Tony	Thire angle Projection		.x ±0.20
	General Dimesion Tolerance		.xx ±0.10
	Units mm		.xxx ±0.05
			.xxxx ±0.03
			ANGULA ±1°