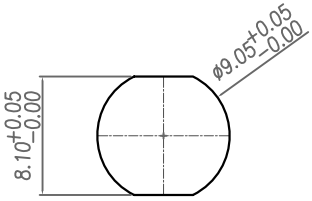
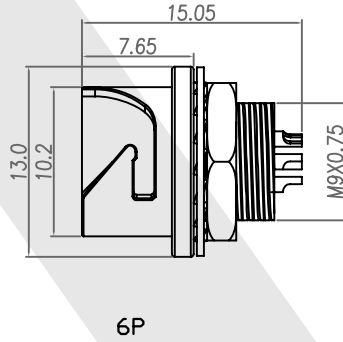
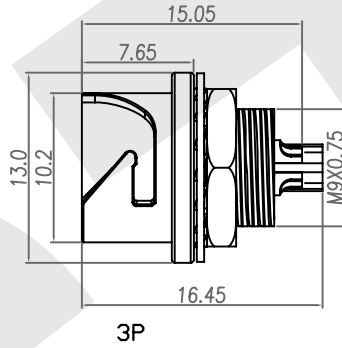
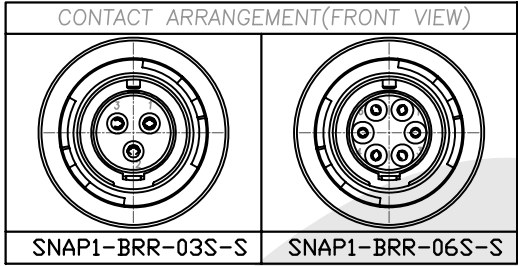
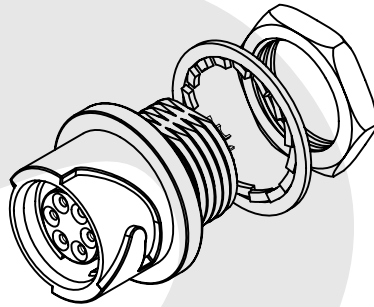
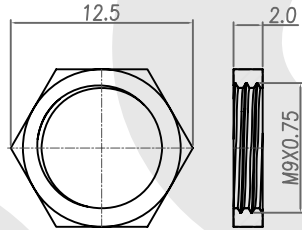
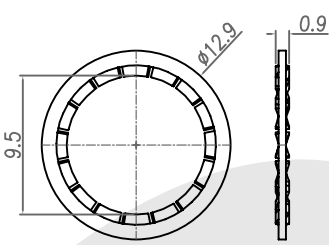


Rev	Revisions	Rev.Drawn	Date
A		Du	22.May.2012

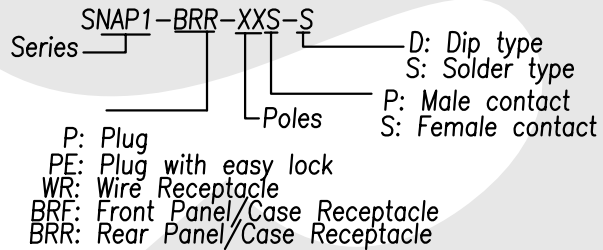
TABLE A



RECOMMENDED MOUNTING HOLE
(Panel thickness 0.7~2)



1. MATERIAL :
- 1-1. HOUSING : PPS UL94V-0
 COLOR : BLACK
 - 1-2. CONTACT : PHOSPHOR BRONZEC
 - 1-3. RECEPTACLE SHELL : ZINC ALLOY
 - 1-4. WAHSER : PHOSPHOR BRONZEC
 - 1-5. NUT : BRASS
2. FINISH :
- 2-1. CONTACT : GOLD FLASH
 - 2-2. RECEPTACLE SHELL : NICKEL
 - 2-3. WAHSER : NICKEL
 - 2-4. NUT : NICKEL
3. ORDERING INFORMATION : WATERPROOF SNAP CONNECTOR



SST SOUTH SEA TERMINAL CO.,LTD

SGS Report No.:	Customer:	Part No.: SNAP1-BRR-XXS-S	
Title: Waterproof Snap CONN. Rear Panel/Case Receptacle Solder Type (F)			
Drawn By: Storm.Li	SCALE: 1:1	SHEET: 1/1	REV.: A
Checked By: du	DWG NO.: QC5718		TOLERANCE: .x ±0.20 .xx ±0.10 .xxx ±0.05 .xxxx ±0.03 ANGULA ±1°
Approved By: Tony	Thire angle Projection		Units: mm
General Dimesion Tolerance			