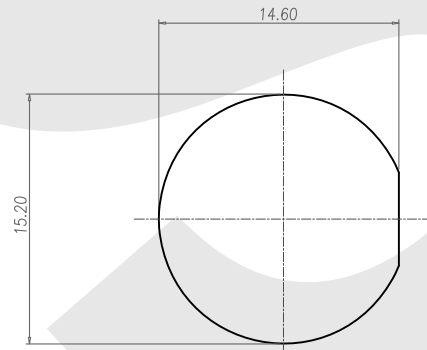
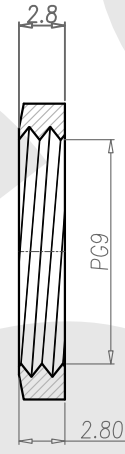
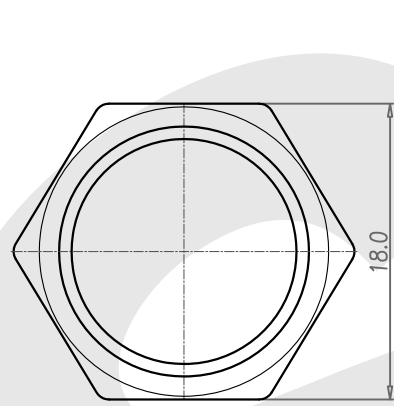
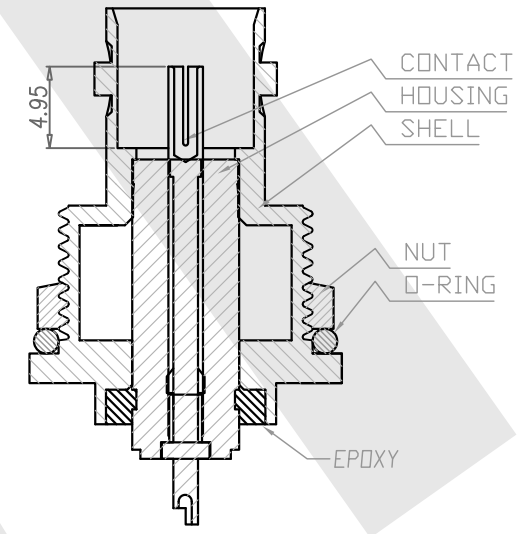
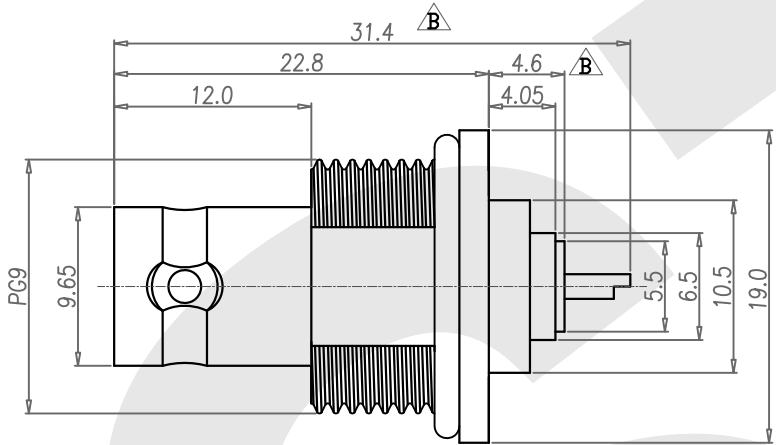
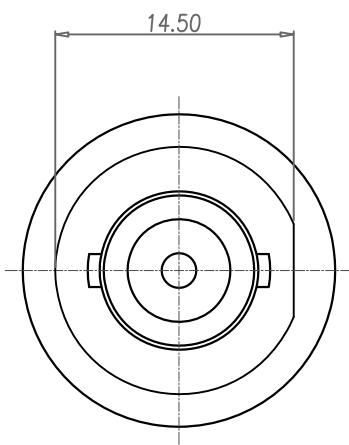


Rev	Revisions	Rev.Drawn	Date
A		Du	23/12/09



PANEL CUT-OUT

NUT

1. MATERIAL :
  - 1-1. HOUSING : TEFLON ; COLOR : WHITE
  - 1-2. CONTACT : BRASS
  - 1-3. NUT : BRASS
  - 1-4. SHELL : BRASS
  - 1-5. O-RING : EPDM
  - 1-6. EPOXY BASE :EF400A&EF400B.COLOR:BLACK
2. FINISH :
  - 2-1. CONTACT : GOLD FLISH MICRO INCHES MIN.
  - 2-2. NUT : NICKEL PLATED
  - 2-3. SHELL : NICKEL PLATED
3. ELECTRICAL SPECIFICATION :
  - 3-1. Rated Voltage : 500 VRMS max.
  - 3-2. IMPEDANCE : 75 Ohm
  - 3-3. Water proof: IP67
4. Environmental :
  - 4-1. Operation Temperature : -20 ℃~85℃

**SST SOUTH SEA TERMINAL CO.,LTD**

SGS Report No.:	Customer:	Part No.:	WP-BNC-01-F-B-FL-PG9-S-S-GF-B-N		
Title: BNC FEMALE SOLDER TYPE FRONT LOCK for PANEL (PG9)					
Drawn By: Storm.Li	SCALE	SHEET	REV.	DWG NO.:	TOLERANCE
Checked By: du	1:1	1/1	A	/	.x ±0.20 .xx ±0.10 .xxx ±0.05 .xxxx ±0.03 ANGULA ±1°
Approved By: Tony	Thire angle Projection General Dimesion Tolerance		Units mm		