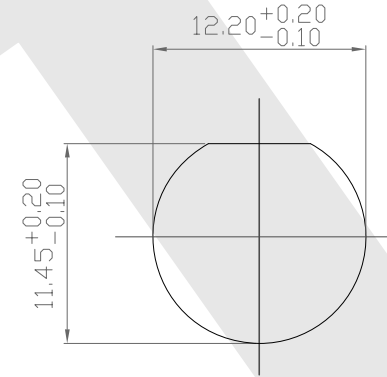
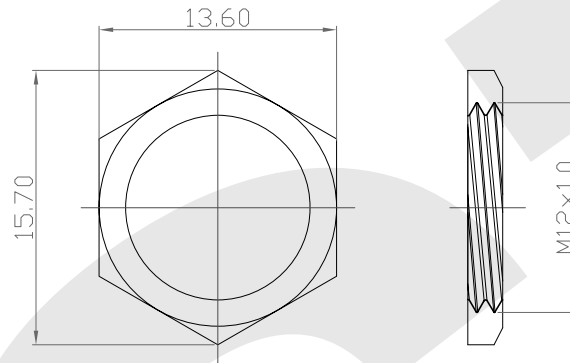
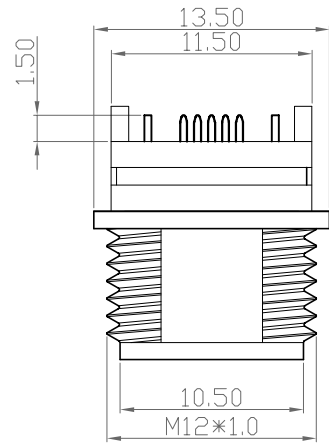
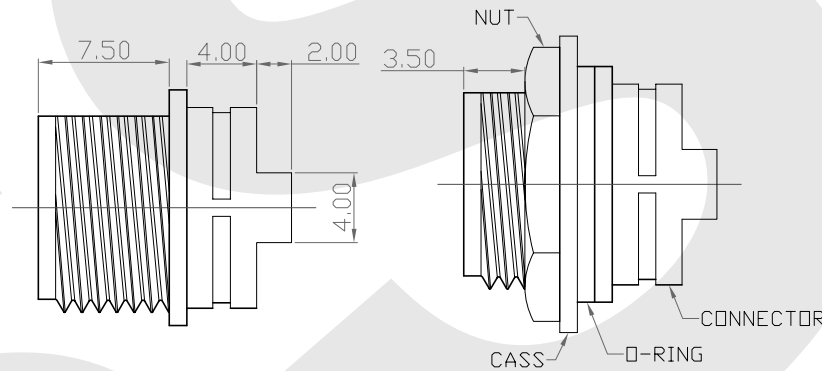
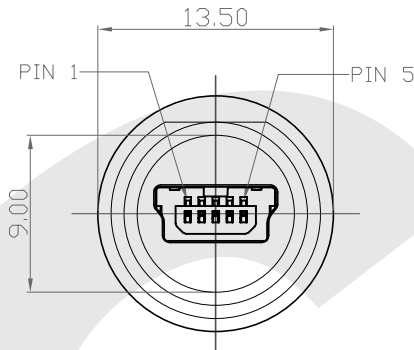


Rev	Revisions	Rev.Drawn	Date
A		Du	14.OCT.2011



NUT

PUT OUT



1. MATERIAL :
  - 1-1 . HOUSING : LCP UL94V-0 ; COLOR : BLACK
  - 1-2 . CONTACT : PHOSPHOR BRONZE
  - 1-3 . SHELL : BRASS
2. PARTS
  - 2-1 . EXTERNAL NUT : PBT UL94V-0 ; COLOR : BLACK
  - 2-2 . O-RING : NBR
3. PLATING
  - 3-1 . CONTACT : GOLD PLATING ON CONTACT AREA  
BRIGHT TIN ON SOLDER AREA
  - 3-2 . SHELL : NICKEL PLATING ON OVER ALL
4. ELECTRICAL SPECIFICATION :
  - 4-1 . Rated current : 1A (AC/DC)
  - 4-2 . Rated Voltage : 30V MAX (AC/DC)
  - 4-3 . Contact resistance : 50mΩ (MAX.)
  - 4-4 . Insulation resistance : 100 MΩ (MIN.)
  - 4-5 . Dielectric Withstanding Voltage : 100 V AC (rms) (1MIN.)
  - 4-6 . Mating force : 35N (3.57kgf) MAX.
5. Environmental :
  - 5-1 . Operation Temperature : -20°C~85°C

**SST** SOUTH SEA TERMINAL CO.,LTD

SGS Report No.:	Customer:	Part No.:
		WP-MUSB-05-F-B
Title: MINI USB 5P(F) 2P*		
Drawn By: Storm.Li	SCALE: 1:1	SHEET: 1/1
Checked By: du	REV: A	DWG NO.: QCS102
Approved By: Tony	Thire angle Projection	
	General Dimension Tolerance	
	Units: mm	TOLERANCE
		.x ±0.20
		.xx ±0.10
		.xxx ±0.05
		.xxxx ±0.03
		ANGULA ±1°