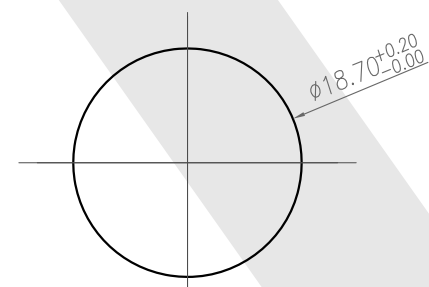
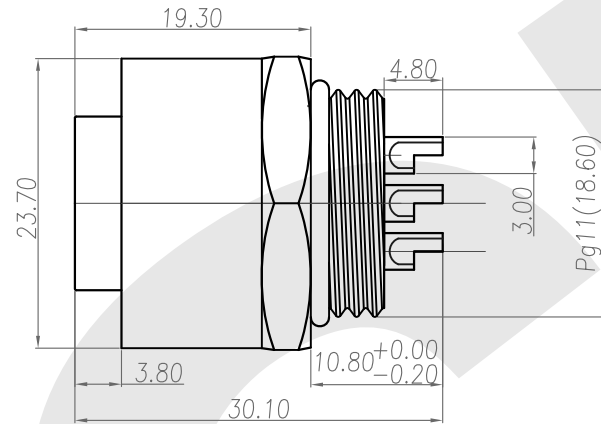
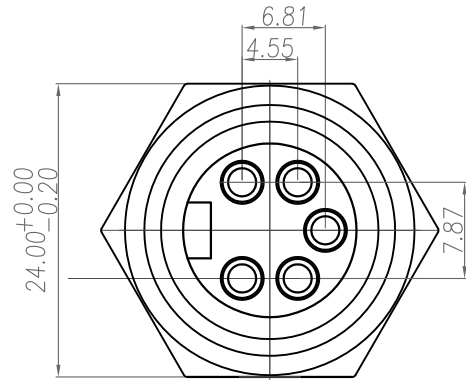
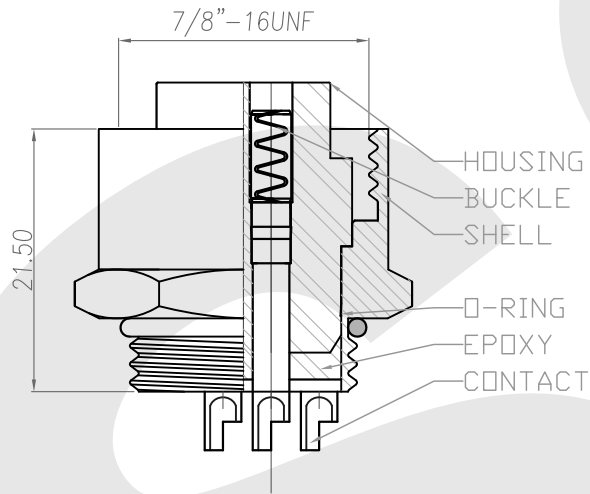


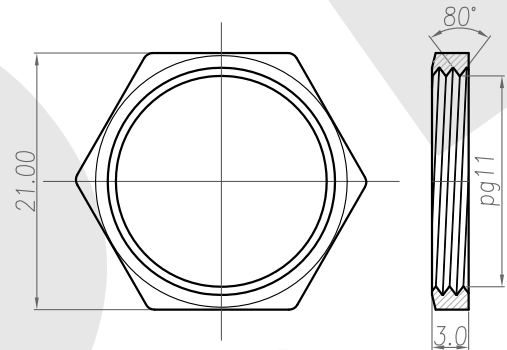
Rev	Revisions	Rev.Drawn	Date
A		Du	07,OCT,2011



PANEL CUT-OUT



1. MATERIAL :
 - 1-1. HOUSING : PBT UL94V-0 ; COLOR : YELLOW
 - 1-2. CONTACT : BRASS
 - 1-3. BUCKLE : BRASS
 - 1-4. SHELL : BRASS
 - 1-5. O-RING : NBR(15.3*0.8) ; COLOR : BLACK
 - 1-6. Epoxy resin : EF400A&EF400B ; COLOR BLACK
2. FINISH :
 - 2-1. CONTACT : 30 MICRO INCHES MIN. GOLD PLATED UNDER PLATE : NICKEL
 - 2-2. BUCKLE : MATTER-TIN PLATED
 - 2-3. SHELL : NICKEL PLATED
3. ELECTRICAL SPECIFICATION :
 - 3-1. Rated current : 20A
 - 3-2. Rated Voltage : 250V
 - 3-3. Water proof: IPX7
4. Environmental :
 - 4-1. Operation Temperature : -20℃~85℃



NUT

SST SOUTH SEA TERMINAL CO.,LTD

SGS Report No.: Customer: Part No.:
7/8FSP-B-A-BL-PG11-C-S-G30-B-N-1

Title: 7/8 FEMALE SOLDER TYPE BACK LOCK for PANEL

Drawn By: Storm.Li	SCALE	SHEET	REV.	DWG NO.:	TOLERANCE .x ±0.20 .xxx ±0.10 .xxxx ±0.05 .xxxxx ±0.03 ANGULA ±1°
Checked By: du	1:1	1/1	A	SST-110531-19	
Approved By: Tony	Thire angle Projection		General Dimesion Tolerance		Units mm