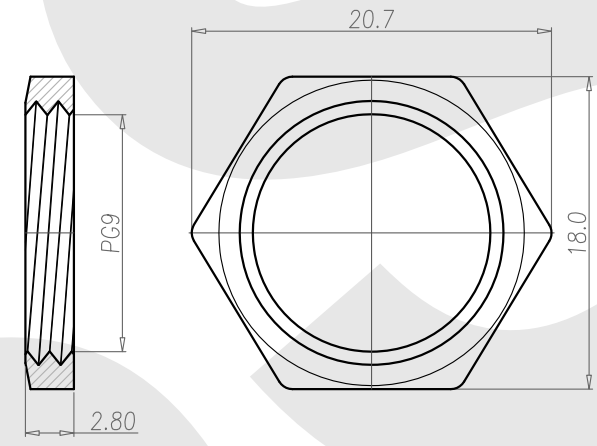
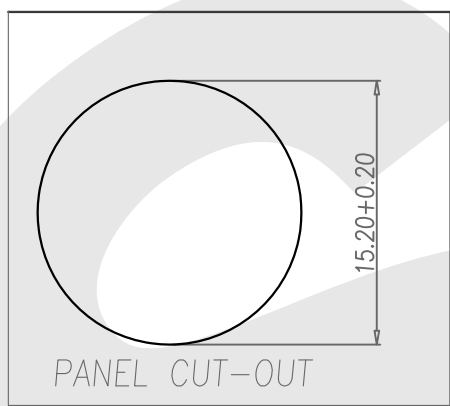
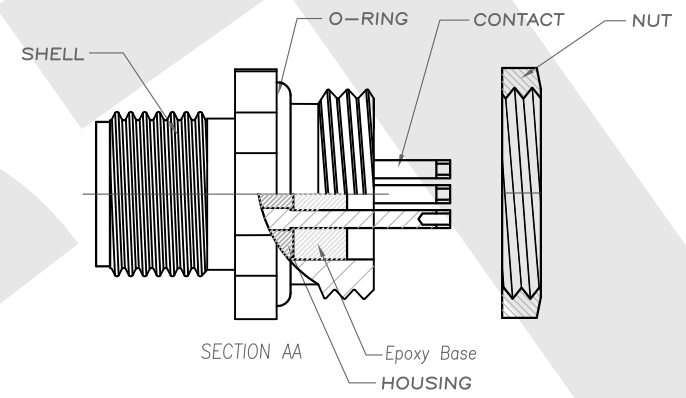
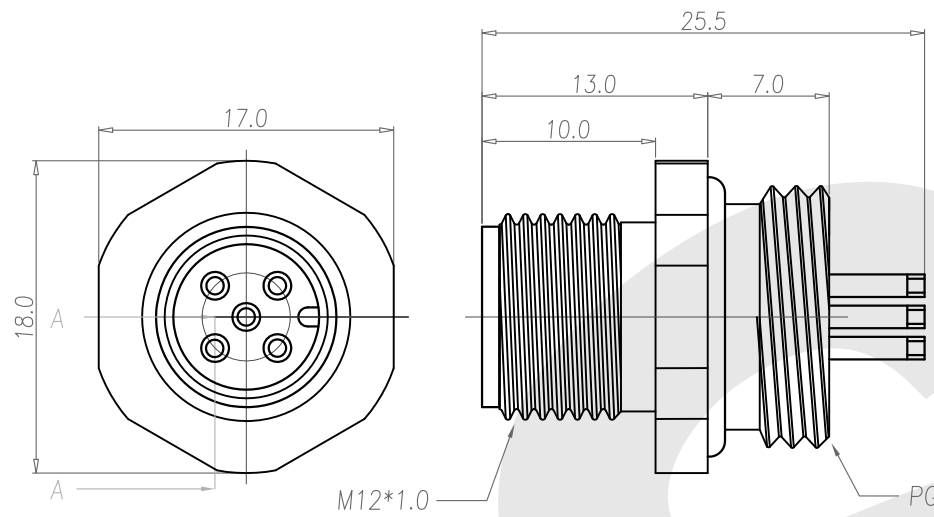


Rev	Revisions	Rev.Drawn	Date
A		Du	06/2010



1. MATERIAL :
 - 1-1. HOUSING : PBT UL94V-0 ; COLOR : BLACK
 - 1-2. CONTACT : BRASS
 - 1-3. SHELL: BRASS
 - 1-4. NUT : BRASS
 - 1-5. O-RING :NBR; COLOR : BLACK
 - 1-6. EPOXY BASE :EF400A&EF400B ;COLOR: BLACK
2. FINISH :
 - 2-1. CONTACT : 10 MICRO INCHES MIN. GOLD PLATED
UNDER PLATE : NICKEL
 - 2-2. SHELL : NICKEL PLATED 60u" ~ 100u" OVER ALL
3. ELECTRICAL SPECIFICATION :
 - 3-1. Rated current : 5A
 - 3-2. Voltage :125V
 - 3-3. Water proof: IPX8
4. Environmental :
 - 4-1. Operation Temperature : -40 ℃~85℃

SST SOUTH SEA TERMINAL CO.,LTD

SGS Report No.:	Customer:	Part No.:
		12M5P-B-A-BL-PG9-C-S-G10-B-N
Title: M12 MALE SOLDER TYPE BACK LOCK for PANEL (PG9)		
Drawn By: Storm.Li	SCALE: 1:1	SHEET: 1/1
Checked By: du	REV.:	A
Approved By: Tony	DWG NO.:	SST-100608-01
	Thire angle Projection	TOLERANCE:
	General Dimesion Tolerance	X. ±2MM
		.X ±0.25MM
		.XX ±0.1MM
		.XXX±0.1MM
	Units	mm