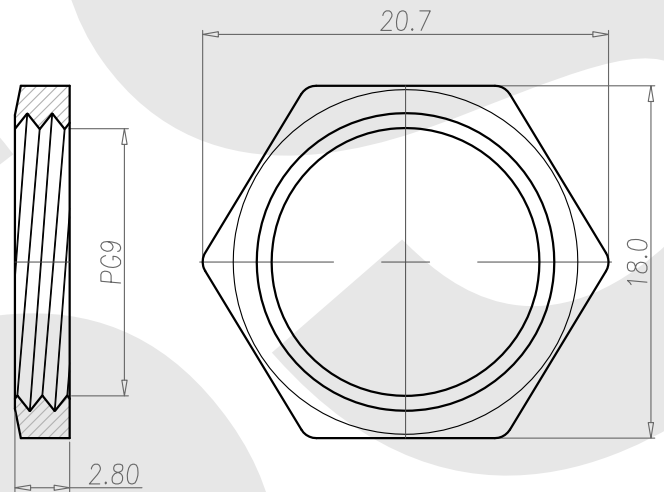
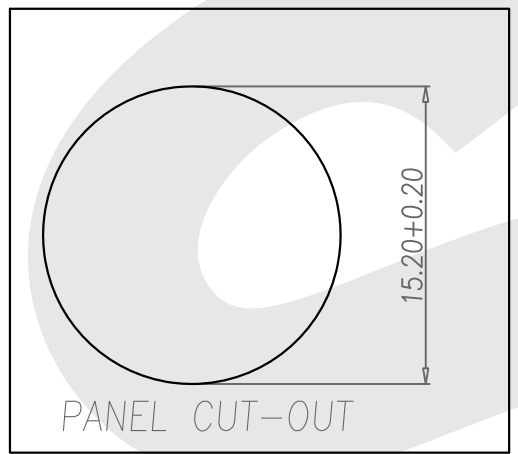
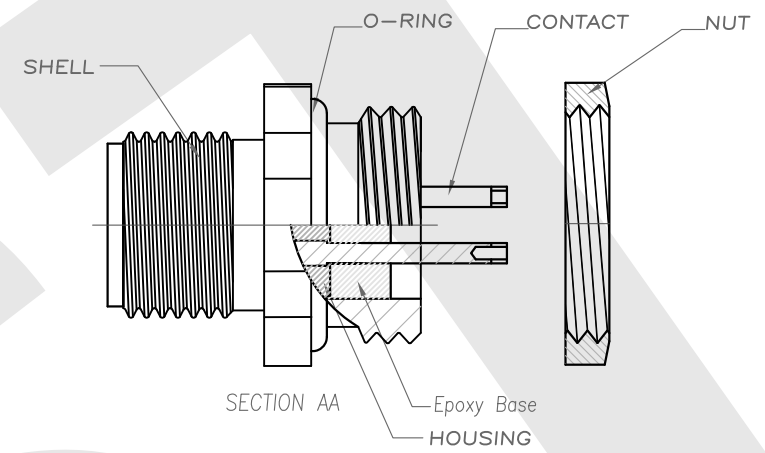
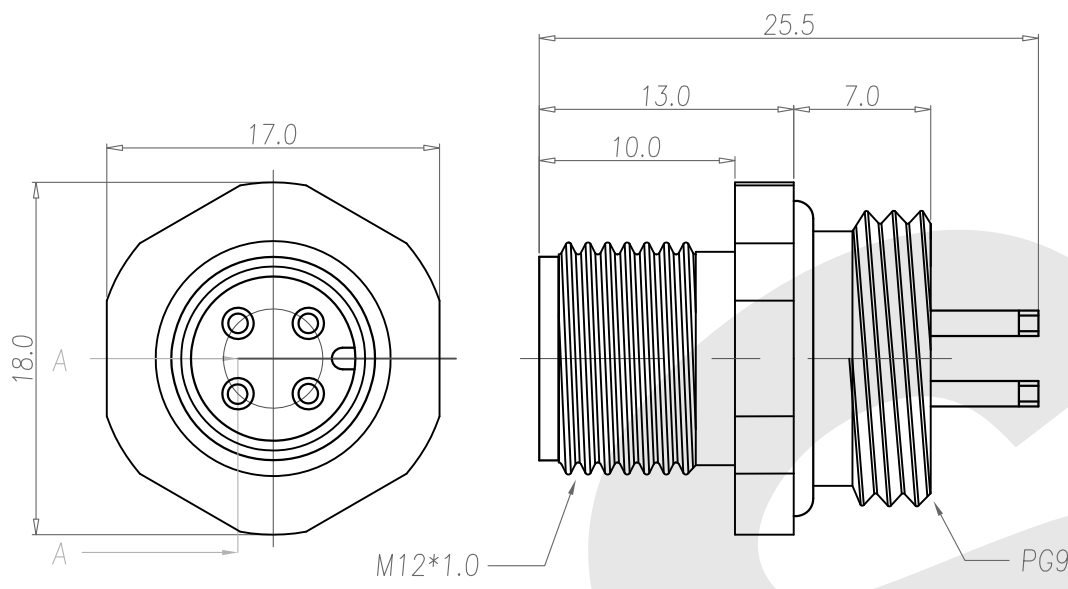


Rev	Revisions	Rev.Drawn	Date
A		Du	06,May,2011



- MATERIAL :**
  - 1-1. HOUSING : PBT UL94V-0 ; COLOR : BLACK
  - 1-2. CONTACT : BRASS
  - 1-3. SHELL: BRASS
  - 1-4. NUT : BRASS
  - 1-5. O-RING :NBR; COLOR : BLACK
  - 1-6. EPOXY BASE :EF400A&EF400B ;COLOR: BLACK
- FINISH :**
  - 2-1. CONTACT : 10 MICRO INCHES MIN. GOLD PLATED UNDER PLATE : NICKEL
  - 2-2. SHELL : NICKEL PLATED 60u" ~ 100u" OVER ALL
- ELECTRICAL SPECIFICATION :**
  - 3-1. Rated current : 5A
  - 3-2. Voltage :125V
  - 3-3. Water proof: IPX8
- Environmental :**
  - 4-1. Operation Temperature : -40 ℃~85℃

**SST SOUTH SEA TERMINAL CO.,LTD**

SGS Report No.:	Customer:	Part No.:
		12M4P-B-A-BL-PG9-C-S-G10-B-N
Title: M12 MALE SOLDER TYPE BACK LOCK for PANEL (PG9)		
Drawn By: Storm.Li	SCALE	SHEET
Checked By: du	1:1	1/1
Approved By: Tony	REV. A	
	DWG NO.:	TOLERANCE
	SST-110506-01	.x ±0.20
	Thire angle Projection	.xx ±0.10
	General Dimension Tolerance	.xxx ±0.05
	Units mm	.xxxx ±0.03
		ANGULA ±1°