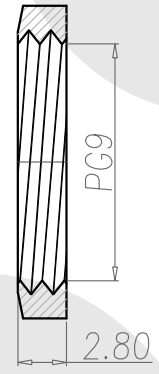
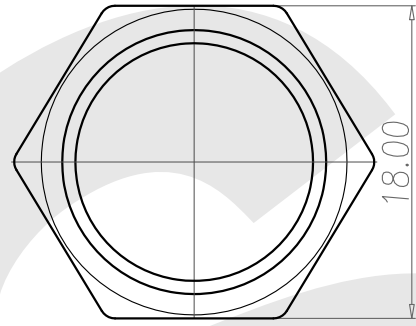
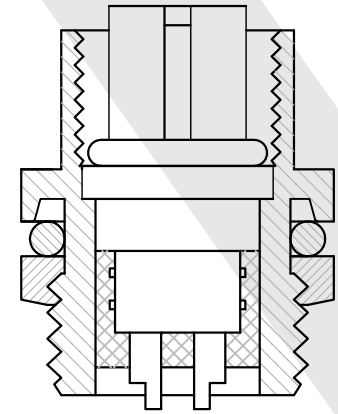
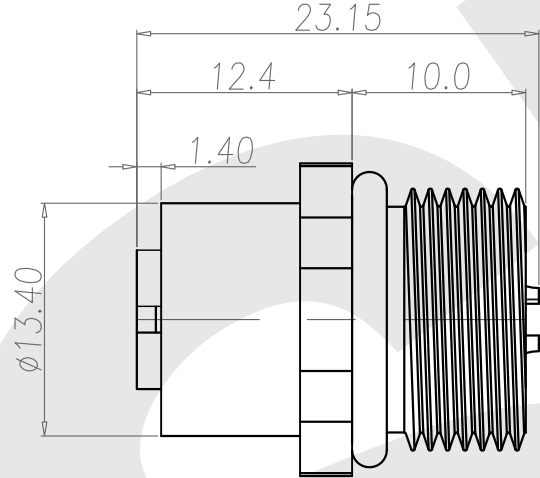
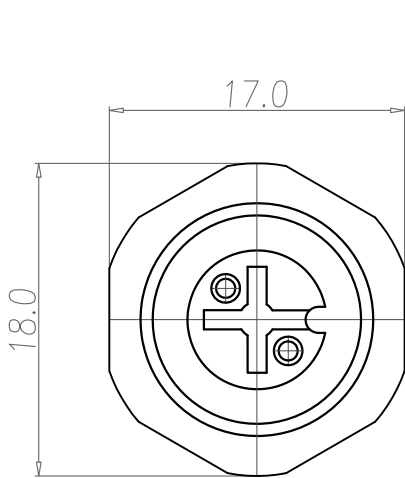


Rev	Revisions	Rev.Drawn	Date
A		Du	21/06/11"



NUT

1. MATERIAL :
 - 1-1. HOUSING : PBT UL94V-0 ; COLOR : BLACK
 - 1-2. CONTACT : BRASS
 - 1-3. SHELL : BRASS
 - 1-4. NUT : BRASS
 - 1-5. O-RING A : EPDM ; COLOR : BROWN.
 - 1-6. O-RING B : EPDM ; COLOR : BLACK
 - 1-7. Epoxy Base : EF400A&EF400B.COLOR:BLACK
2. FINISH :
 - 2-1. CONTACT : 10 MICRO INCHES MIN. GOLD PLATED
UNDER PLATE : NICKEL
 - 2-2. SHELL : NICKEL PLATED.
 - 2-2. NUT : NICKEL PLATED.
3. ELECTRICAL SPECIFICATION :
 - 3-1. Rated current : 5A
 - 3-2. Rated Voltage : 125V
 - 3-3. Water proof : IPX7
4. Environmental :
 - 4-1. Operation Temperature : -20 °C~85°C

SST SOUTH SEA TERMINAL CO.,LTD

SGS Report No.:	Customer:	Part No.:			
	12F2P-B-A-BL-PG9-C-S-G10-B-N-1				
Title:M12 FEMALE SOLDER TYPE BACK LOCK for PANEL (PG9)					
Drawn By:Storm.Li	SCALE	SHEET	REV.	DWG NO.:	TOLERANCE: .x ±0.20 .xx ±0.10 .xxx ±0.05 .xxxx ±0.03 ANGULA ±1*
Checked By:du	1:1	1/1	A	/	
Approved By: Tony	Thire angle Projection			Units mm	
	General Dimension Tolerance				