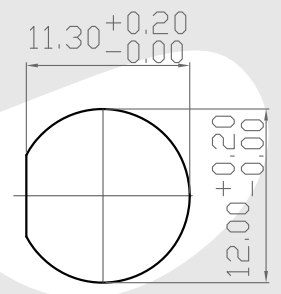
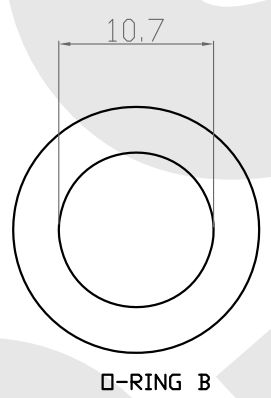
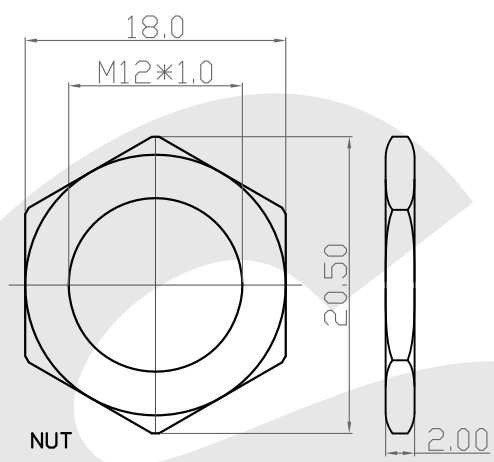
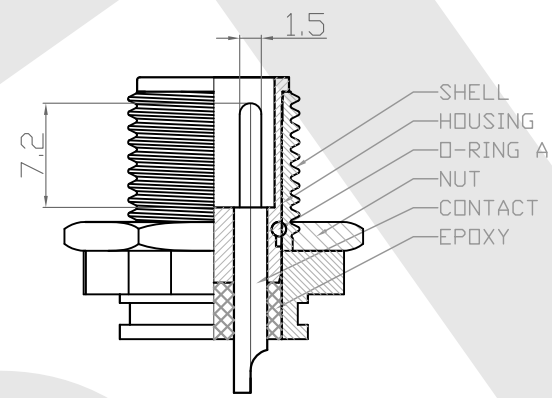
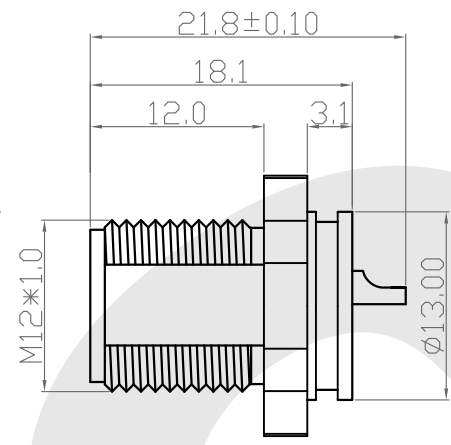
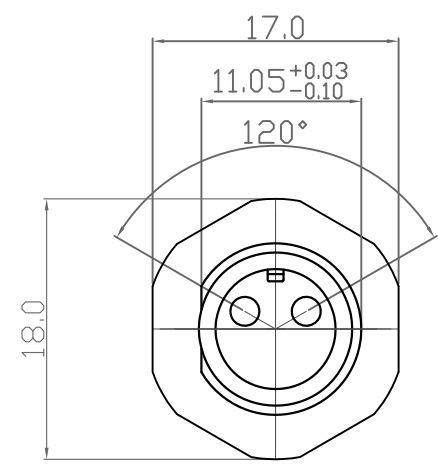


Rev	Revisions	Rev.Drawn	Date
A		Du	01/04/13*



- MATERIAL :**
 - 1-1. HOUSING : PBT UL94V-0 ; COLOR : BLACK
 - 1-2. CONTACT : BRASS
 - 1-3. SHELL : BRASS
 - 1-4. NUT : BRASS
 - 1-5. O-RING A : SILICONE ; COLOR : BROWN.
 - 1-6. O-RING B : EPDM ; COLOR : BLACK
 - 1-7. Epoxy Base :EF400A&EF400B.COLOR:BLACK
- FINISH :**
 - 2-1. CONTACT : GOLD FLASH MICRO INCHES MIN.
 - UNDER PLATE : NICKEL
 - 2-2. SHELL : NICKEL PLATED.
 - 2-2. NUT : NICKEL PLATED.
- ELECTRICAL SPECIFICATION :**
 - 3-1. Rated current : 10A
 - 3-2. Rated Voltage : 125V
 - 3-3. Water proof: IPX7
- Environmental :**
 - 4-1. Operation Temperature : -20 °C~85°C

SST SOUTH SEA TERMINAL CO.,LTD

SGS Report No.:	Customer:	Part No.:
	12M2P-B-A-FL-12x1.0-S-S-GF-B-N	
Title: M12 MALE SOLDER TYPE FRONT LOCK for PANEL (10A,10A+3A)		
Drawn By: Storm.Li	SCALE	SHEET
Checked By: du	1:1	1/1
Approved By: Tony	REV.	A
	DWG NO.:	/
	Third angle Projection	Units
	General Dimension Tolerance	mm
	TOLERANCE:	
	.x ±0.20	
	.xx ±0.10	
	.xxx ±0.05	
	.xxxx ±0.03	
	ANGULA ±1*	