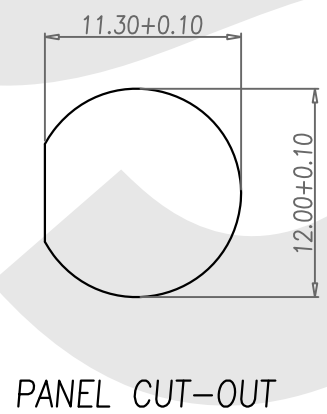
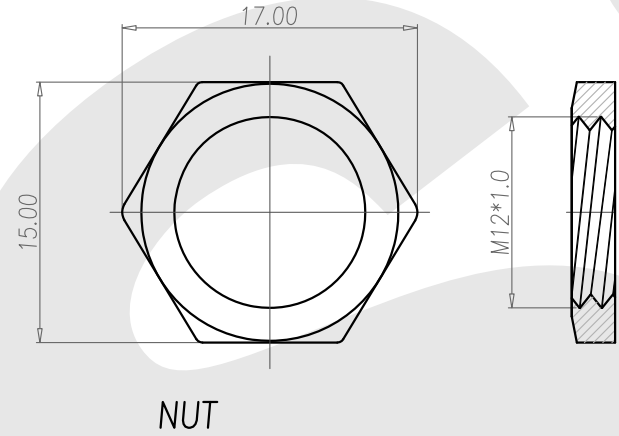
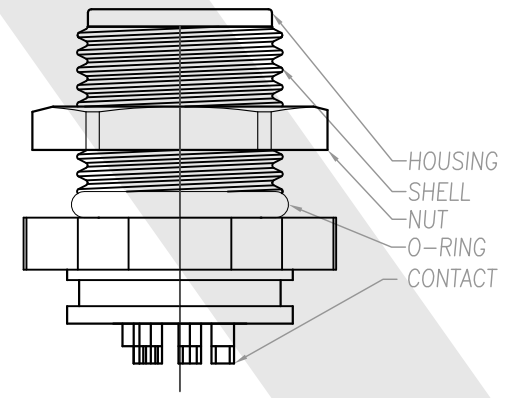
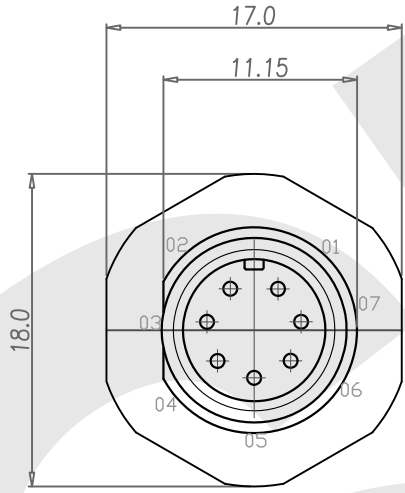
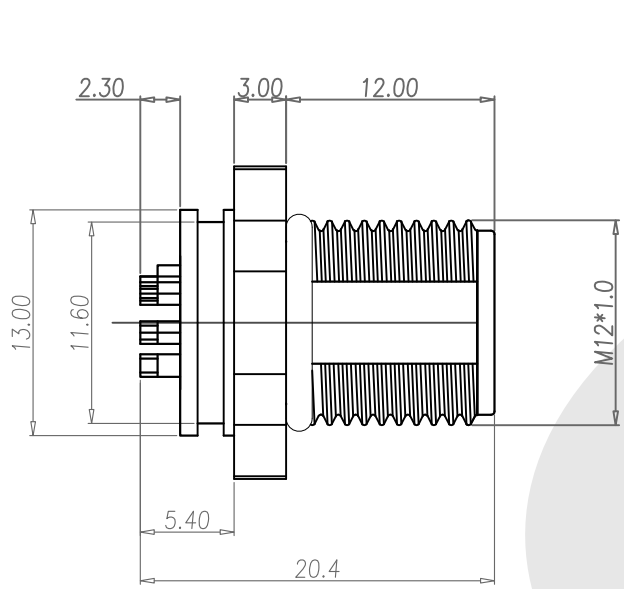


| | | | |
|-----|-----------|-----------|-----------|
| Rev | Revisions | Rev.Drawn | Date |
| A | | Du | 19/04/11" |



- NOTE:**
- MATERIAL :**
 - 1-1. HOUSING : PBT UL94V-0 ; COLOR : BLACK
 - 1-2. CONTACT : BRASS
 - 1-3. SHELL : BRASS
 - 1-4. NUT : BRASS
 - 1-5. O-RING : EPDM; COLOR : BLACK
 - FINISH :**
 - 2-1. CONTACT : 10 MICRO INCHES MIN. GOLD PLATED UNDER PLATE : NICKEL
 - 2-2. SHELL : NICKEL PLATED OVER ALL
 - 2-3. NUT : NICKEL PLATED OVER ALL
 - ELECTRICAL SPECIFICATION :**
 - 3-1. RATED CURRENT : 5A
 - 3-2. VOLTAGE : 125V
 - 3-3. WATER PROOF : IPX7
 - ENVIRONMENTAL:**
 - 4-1. OPERATION TEMPERATURE : -40℃~85℃

SST SOUTH SEA TERMINAL CO.,LTD

| | | |
|---|------------|-----------------------------------|
| SGS Report No.: | Customer: | Part No.: |
| | | 12M7P-B-A-FL-12x1.0-S-S-G10-B-N-1 |
| Title:M12 MALE SOLDER TYPE FRONT LOCK for PANEL | | |
| Drawn By:Storm.Li | SCALE | SHEET |
| Checked By:du | 1:1 | 1/1 |
| Approved By:Tony | REV. | A |
| | DWG NO.: | / |
| | Units | mm |
| | TOLERANCE: | .x ±0.20 |
| | | .xx ±0.10 |
| | | .xxx ±0.05 |
| | | .xxxx ±0.03 |
| | | ANGULA ±1* |