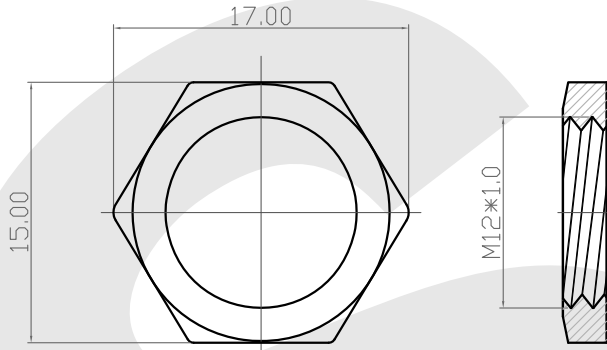
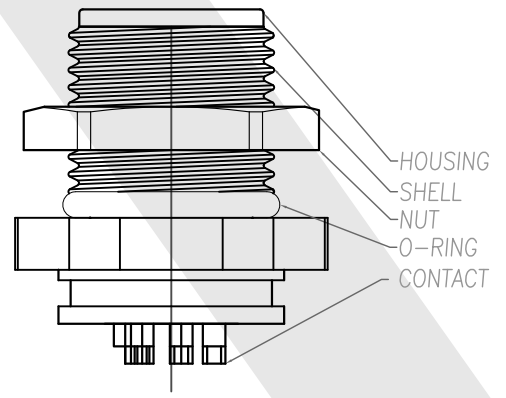
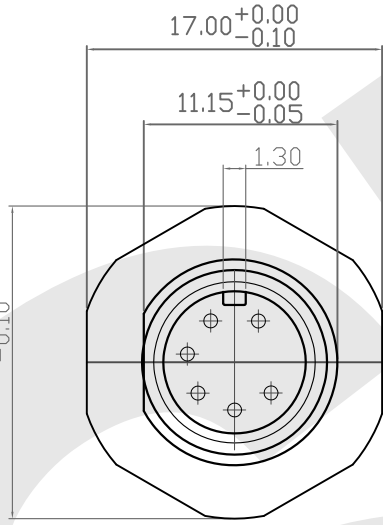
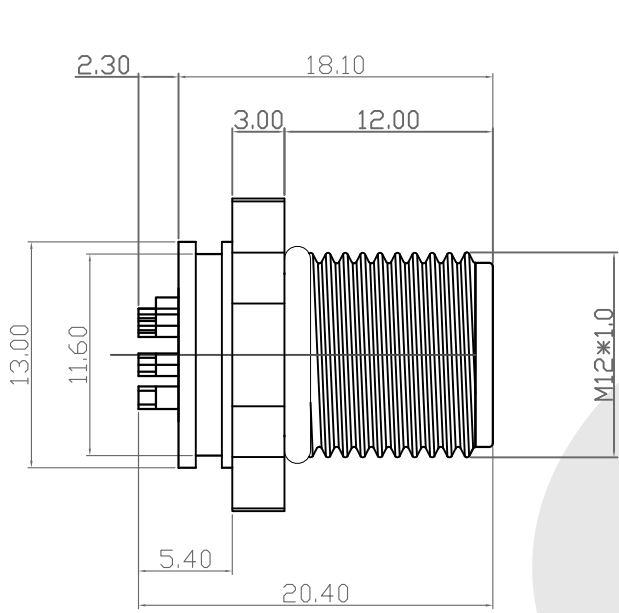
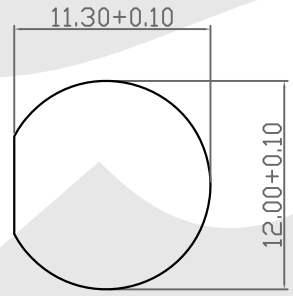


Rev	Revisions	Rev.Drawn	Date
A		Du	18/03/11"



NUT



PANEL CUT-OUT

NOTE:

1. MATERIAL :
 - 1-1. HOUSING : PBT UL94V-0 ; COLOR : BLACK
 - 1-2. CONTACT : BRASS
 - 1-3. SHELL : BRASS
 - 1-4. NUT : BRASS
 - 1-5. O-RING: EPDM; COLOR : BLACK
2. FINISH :
 - 2-1. CONTACT : 10 MICRO INCHES MIN. GOLD PLATED
UNDER PLATE : NICKEL
 - 2-2. SHELL : NICKEL PLATED OVER ALL
 - 2-3. NUT : NICKEL PLATED OVER ALL
3. ELECTRICAL SPECIFICATION :
 - 3-1. RATED CURRENT : 5A
 - 3-2. VOLTAGE : 125V
 - 3-3. WATER PROOF : IPX7
4. ENVIRONMENTAL:
 - 4-1. OPERATION TEMPERATURE : -40°C~85°C

SST SOUTH SEA TERMINAL CO.,LTD

SGS Report No.:	Customer:	Part No.:
		12M6P-B-A-FL-12x1.0-S-S-G10-B-N-1
Title:M12 MALE SOLDER TYPE FRONT LOCK for PANEL		
Drawn By:Storm.Li	SCALE	SHEET
Checked By:du	1:1	1/1
Approved By:Tony	REV.	A
	DWG NO.:	/
	Third angle Projection	Units
	General Dimension Tolerance	mm
	TOLERANCE:	
	.x	±0.20
	.xx	±0.10
	.xxx	±0.05
	.xxxx	±0.03
	ANGULA	±1°