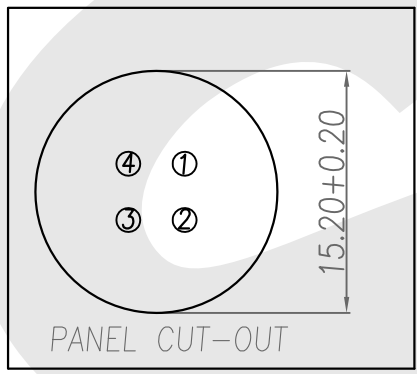
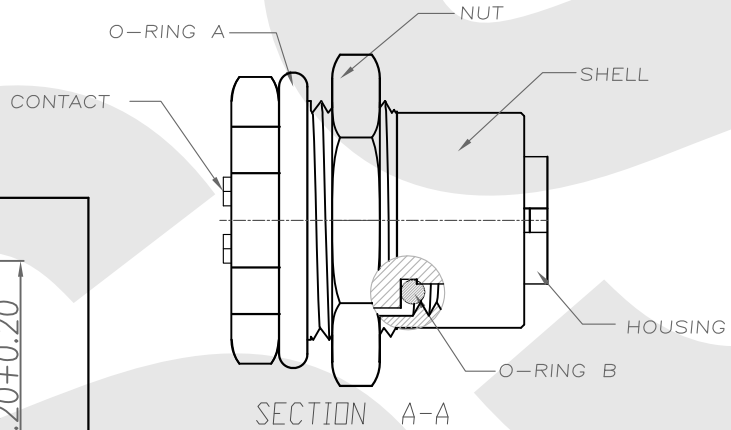
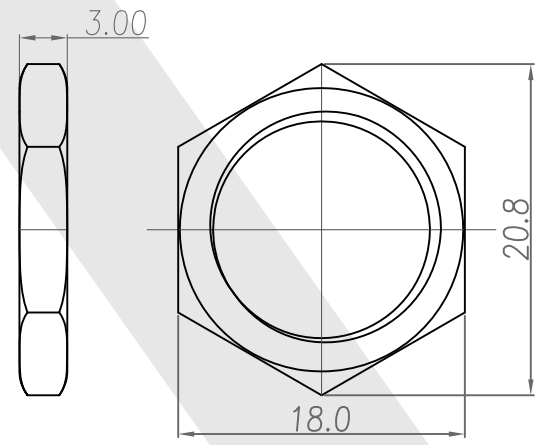
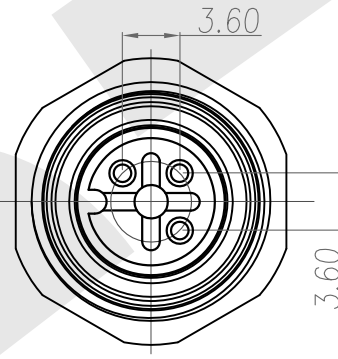
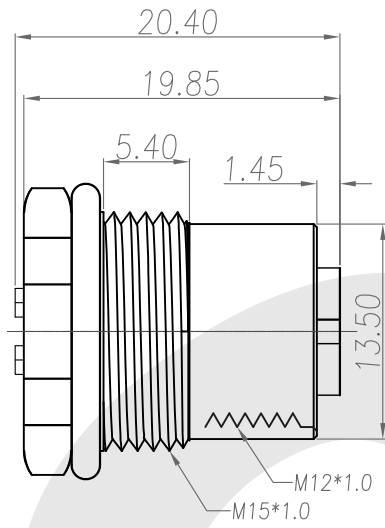
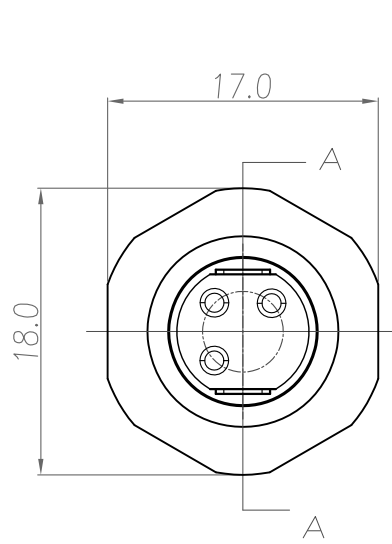


Rev	Revisions	Rev.Drawn	Date
A		Du	22/12/08



1. MATERIAL :
 - 1-1. HOUSING : PBT UL94V-0 ; COLOR : BLACK
 - 1-2. CONTACT : BRASS
 - 1-3. SHELL : BRASS
 - 1-4. NUT : BRASS
 - 1-5. O-RING A :NBR; COLOR : BLACK
 - 1-6. O-RING B :NBR; COLOR : BLACK
2. FINISH :
 - 2-1. CONTACT A : 10 MICRO INCHES MIN. GOLD PLATED
UNDER PLATE : NICKEL
 - 2-2. SHELL A : NICKEL PLATED 60u" ~ 100u" OVER ALL
3. ELECTRICAL SPECIFICATION :
 - 3-1. Rated current : 5A
 - 3-2. Voltage :125V
 - 3-3. Water proof: IPX8
4. Environmental :
 - 4-1. Operation Temperature : -40 °C~85°C

SST SOUTH SEA TERMINAL CO.,LTD

SGS Report No.:	Customer:	Part No.:
	12F3P-B-A-FL-15x1.0-C-S-G10-B-N-1	
Title: M12 FEMALE SOLDER TYPE FRONT LOCK for PANEL (M15)		
Drawn By: Storm.Li	SCALE	SHEET
Checked By: du	1:1	1/1
Approved By: Tony	REV. A	
Thire angle Projection		DWG NO.:
General Dimesion Tolerance		/
		Units
		mm
		TOLERANCE:
		.x ±0.20
		.xx ±0.10
		.xxx ±0.05
		.xxxx ±0.03
		ANGULA ±1*