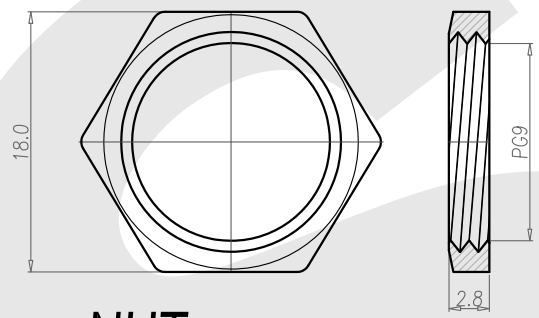
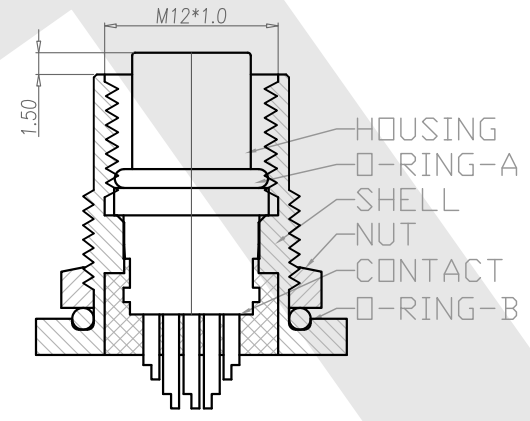
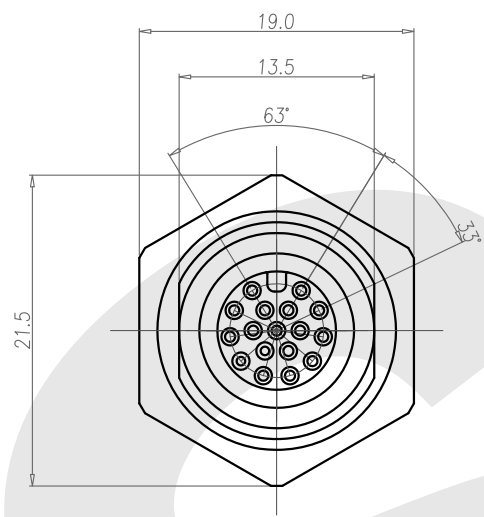
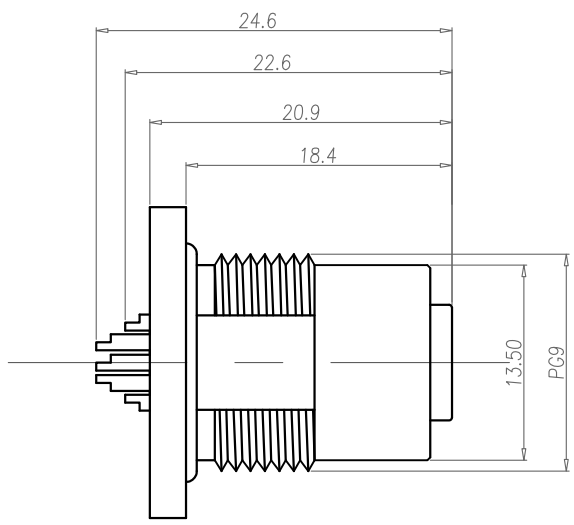
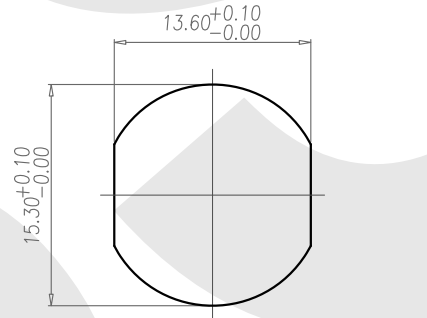


Rev	Revisions	Rev.Drawn	Date
A		Du	17/05/10*



**NUT**



RECOMMEND PANEL CUT-OUT

1. MATERIAL :
  - 1-1. HOUSING : PBT UL94V-0 ; COLOR : BLACK
  - 1-2. CONTACT : BRASS
  - 1-3. NUT : BRASS
  - 1-4. SHELL : BRASS
  - 1-5. O-RING : EPDM ; COLOR : BLACK
2. FINISH :
  - 2-1. CONTACT : 10 MICRO INCHES MIN. GOLD PLATED  
UNDER PLATE : NICKEL
  - 2-2. NUT : NICKEL PLATED
  - 2-3. SHELL : NICKEL PLATED
3. ELECTRICAL SPECIFICATION :
  - 3-1. Rated current : 1A
  - 3-2. Rated Voltage : 30V
  - 3-3. Water proof: IPX7
4. Environmental :
  - 4-1. Operation Temperature : -40℃~85℃

**SST SOUTH SEA TERMINAL CO.,LTD**

SGS Report No.:	Customer:	Part No.:
	12F17P-B-A-FL-PG9-D-S-G10-B-N-3	
Title: M12 FEMALE SOLDER TYPE FRONT LOCK for PANEL (PG9)		
Drawn By: Storm.Li	SCALE	SHEET
Checked By: du	1:1	1/1
Approved By: Tony	REV.	A
	DWG NO.:	/
	Third angle Projection	
	General Dimension Tolerance	
	Units	mm
TOLERANCE:		
.x		±0.20
.xx		±0.10
.xxx		±0.05
.xxxx		±0.03
ANGULA		±1°